

LIMPSFIELD AVENUE, SW19

£2,500 PER MONTH PART FURNISHED, UNFURNISHED

**A beautifully presented split-level maisonette
with a private West facing garden**

Southfields | 020 8877 1000 | southfields@winkworth.co.uk

Winkworth

for every step...

winkworth.co.uk



DESCRIPTION:

A beautifully presented split-level maisonette with a private West facing garden. This property offers a spacious living room with separate fitted kitchen. Three bedrooms are serviced by a modern bathroom and additional guest WC. Of particular note is the private 30 ft. rear garden.

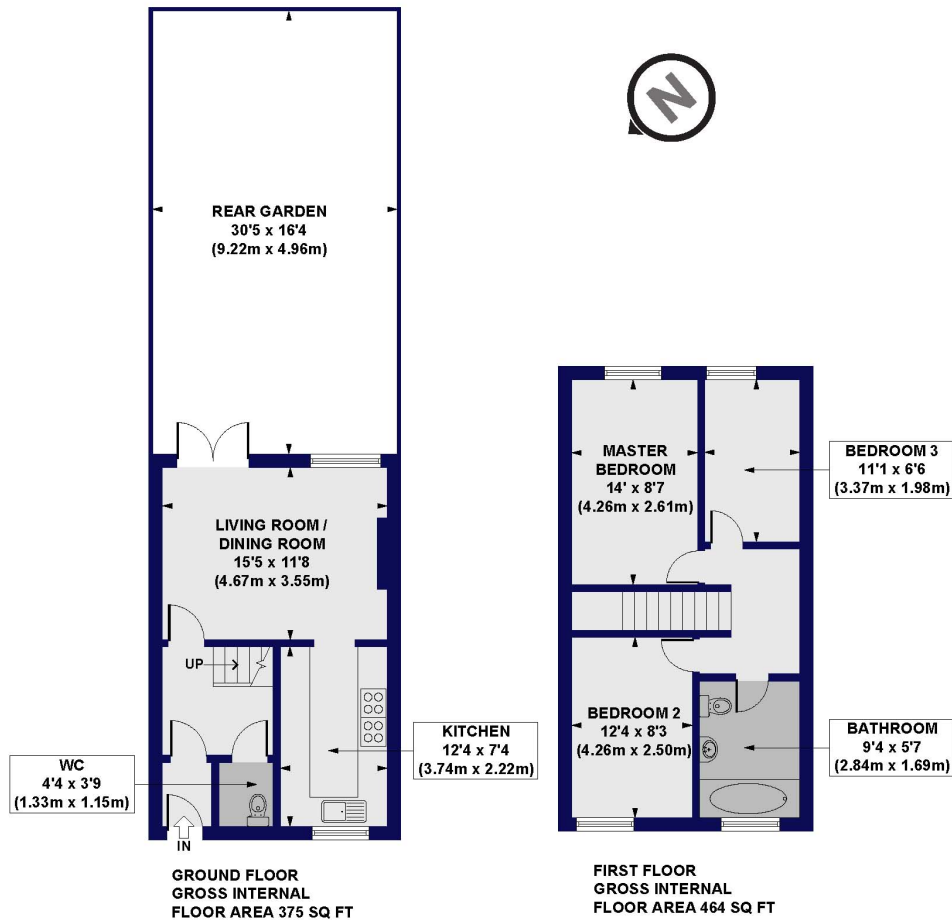
Limpsfield Avenue is within easy reach of Southfields, Wimbledon and Putney. The green open spaces of Wimbledon Common are moments away.

ACCOMMODATION

Long Let, 3 Bedrooms, 1 Reception Rooms, 1 Bathrooms, Maisonette, Ground Floor, First Floor, Garden, Residents Parking, Off Street Parking, Town/City, Part Furnished, Unfurnished, 839 Approx Sq Ft



Goddard House, Limpsfield Avenue, SW19
Approx. Gross Internal Floor Area 839 sq. ft / 77.99 sq. m



All measurements of walls, doors, windows, fittings and appliances, including their size and location, are shown as standard sizes and do not constitute any warranty or representation by the seller, their agent or CP Creative. Any intending purchaser must satisfy himself by inspection or otherwise as to the correctness of the information contained in these plans. This plan is for illustrative purposes only and should be used as such by any prospective purchasers.

Winkworth

This floorplan is for illustration purposes only and is not to scale. The position and size of doors, windows, appliances and other features are approximate.

Deposit: £2,884.62

Holding Deposit: 1 week's rent

Council Tax Band: Wandsworth

Where no figures are shown, we have been unable to ascertain the information. All figures that are shown were correct at the time of printing.

Southfields | 020 8877 1000 | southfields@winkworth.co.uk

Winkworth

for every step...

winkworth.co.uk

Winkworth wishes to inform prospective buyers and tenants that these particulars are a guide and act as information only. All our details are given in good faith and believed to be correct at the time of printing but they don't form part of an offer or contract. No Winkworth employee has authority to make or give any representation or warranty in relation to this property. All fixtures and fittings, whether fitted or not are deemed removable by the vendor unless stated otherwise and room sizes are measured between internal wall surfaces, including furnishings.