



Winkworth
for every step...



Winkworth
for every step...



Winkworth
for every step...

ROE END, LONDON, NW9
£450,000 LEASEHOLD

STUNNING TWO BEDROOM GROUND FLOOR MAISONETTE - ROE GREEN VILLAGE

Kingsbury | 020 8204 0000 | kingsbury@winkworth.co.uk

Winkworth

winkworth.co.uk

See things differently



Winkworth are proud to introduce to the market this pristine turn key home beautifully positioned within the highly sought after Roe Green Village, Kingsbury. Featuring crisp and clean neutral decor throughout, on offer is a homely reception room, sleek modern kitchen leading through to a gorgeous 100ft rear garden, two well-proportioned bedrooms, and an attractive family shower room featuring dual fuel towel radiator. Further benefits include underfloor heating in the bathroom, kitchen and hallway, home automation in the living room, security camera system, garden lighting, and power provisions for an outbuilding at the back of the house. Planning permission for a single storey rear extension and installation of side window has also been granted on the property (Ref: PP-10525297). Roe End sits ideally between worlds, set back from the hustle and bustle of hectic city living, yet still being within walkable proximity from local shops, amenities, places of worship, bus and London Underground links including Kingsbury Station (Jubilee Line) and rated schools such as Kingsbury High and Roe Green Primary.





Winkworth
for every step...



Winkworth
for every step...



Winkworth
for every step...



Winkworth
for every step...

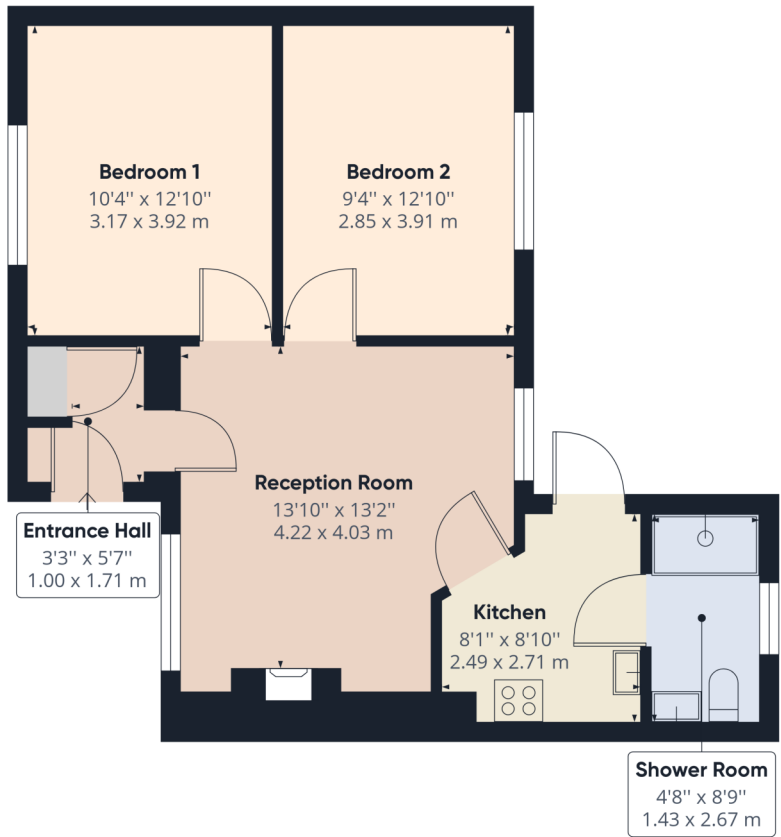


Winkworth
for every step...



Winkworth
for every step...

Winkworth



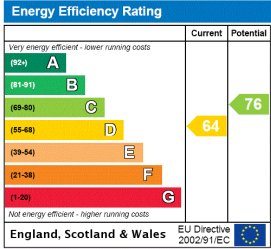
Approximate total area⁽¹⁾
 571.44 ft²
 53.09 m²

(1) Excluding balconies and terraces

While every attempt has been made to ensure accuracy, all measurements are approximate, not to scale. This floor plan is for illustrative purposes only.

GIRAFFE360

This floorplan is for illustration purposes only and is not to scale. The position and size of doors, windows, appliances and other features are approximate.



Kingsbury | 020 8204 0000 | kingsbury@winkworth.co.uk

