

Lower Ground Floor, Sinclair Road, London, W14

£895,000 Leasehold

A well presented two bedroom flat with large private garden, set within an imposing, bay fronted Victorian townhouse.

Winkworth



LOCATION

The property is situated towards the western end of Sinclair Road, ideal for Brook Green's fantastic selection of pubs, restaurants, shops and cafés, with a further more comprehensive range available at both Westfield London and Kensington High Street. Superb transport links are on offer; the closest Underground stations being Kensington Olympia, Shepherds Bush, West Kensington and Hammersmith.

DESCRIPTION

The property offers well proportioned accommodation arranged over the lower ground, which comprises entrance hall, utility room, kitchen, reception room, study, bathroom and two bedrooms. The property further benefits from a good size, landscaped garden.

Leasehold:- 999 years from 1 January 2014

Service Charge:- £2100 p.a. paid in quarterly instalments

Ground Rent:- Peppercorn





LOCAL AUTHORITY
Hammersmith & Fulham

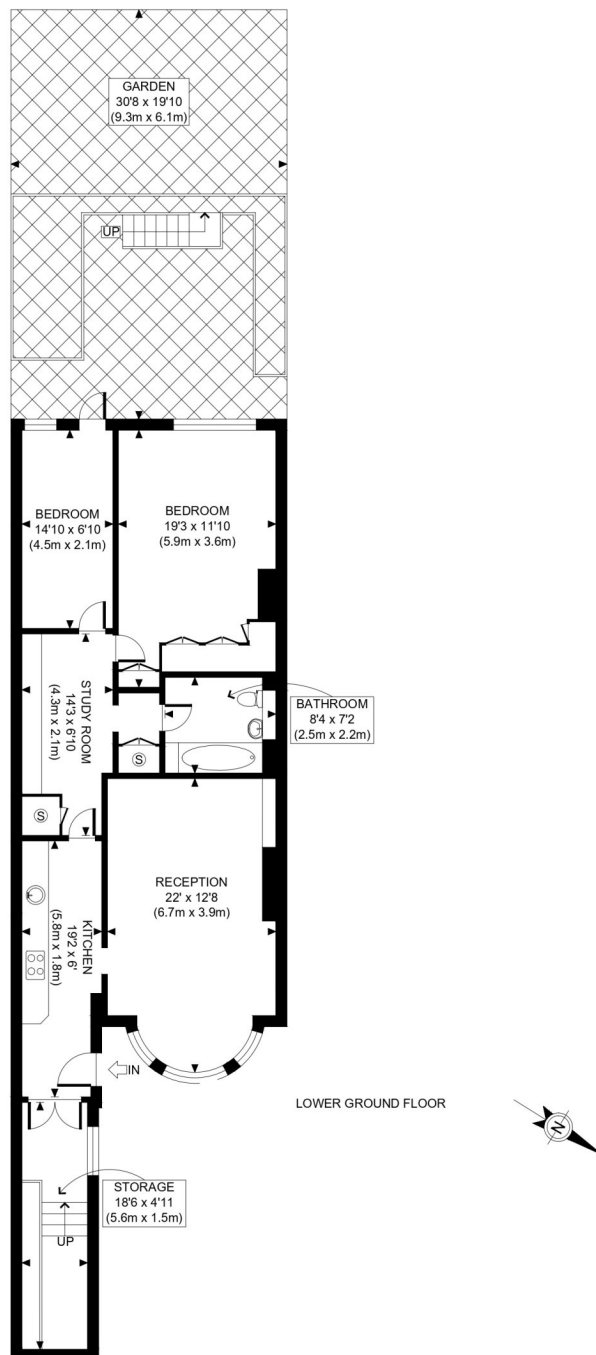
TENURE
Leasehold 988 years 5 months.

PRICE: £895,000 Leasehold



Score	Energy rating	Current	Potential
92+	A		
81-91	B		
69-80	C		77 C
55-68	D	68 D	
39-54	E		
21-38	F		
1-20	G		





APPROX. GROSS INTERNAL FLOOR AREA: 990 SQ FT/ 92 SQM

Winkworth

SINCLAIR ROAD, W14

This plan is for illustrative purposes only and should be used as such by any prospective client. Whilst every attempt has been made to ensure the accuracy of the Floor Plan contained here, measurements of the doors, windows, rooms and any other items are approximate and no responsibility is taken for any errors, omissions, or misstatement. The services, systems and appliances shown have not been tested and no guarantee as to the operability or efficiency can be given.

PROPERTY PHOTO PLANS .CO.UK
ONE STOP SHOP FOR PROPERTY MARKETING

The displayed square footage is taken from the floor plans with measurements created using the Royal Institute of Chartered Surveyors' Code of Practice for Measuring. These measurements are approximate and included for illustrative purposes only. Winkworth does not make any representation as to the accuracy of these measurements and you should seek to verify them for yourself. Winkworth accept no liability for any loss you may suffer if you rely on these measurements.

Hammersmith | 0207 371 4466 | hammersmith@winkworth.co.uk

Winkworth

for every step...

Under the Property Misdescriptions Act 1991, these Particulars are a guide and act as information only. All details are given in good faith and are believed to be correct at time of printing. Winkworth give no representation as to their accuracy and potential purchasers or tenants must satisfy themselves by inspection or otherwise as to their correctness. No employee of Winkworth has authority to make or give any representation or warranty in relation to this property.