

LANCASTER GARDENS, LONDON, N2
£375,000 LEASEHOLD

A MODERN, TWO BEDROOM, PURPOSE BUILT APARTMENT.

Finchley | 020 8349 3388 | finchley@winkworth.co.uk

Winkworth

for every step...

winkworth.co.uk



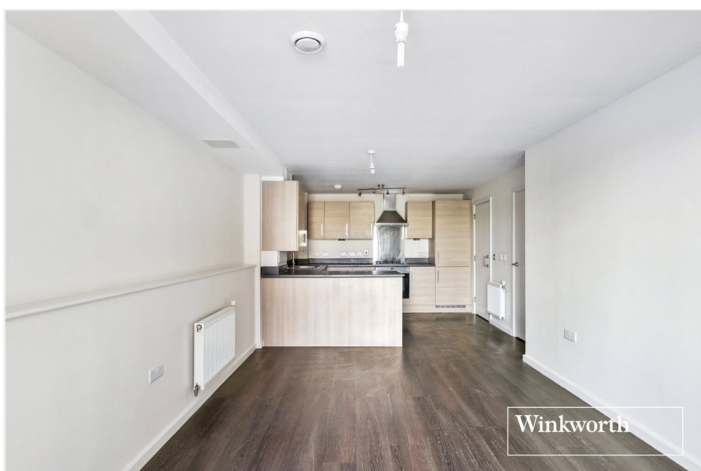
DESCRIPTION:

Set in a well maintained and secure gated development, we are pleased to offer this modern two bedroom, first floor, purpose built apartment situated to the rear of the property facing the courtyard and gardens. The property is comprised of an open plan living and kitchen area with modern fitted units, bathroom, two double bedrooms, access to private balcony, lift in block, and allocated underground parking space. It is ideally located for local amenities and transport links such as East Finchley underground which is under a mile away.

Offered on a chain free basis.

AT A GLANCE

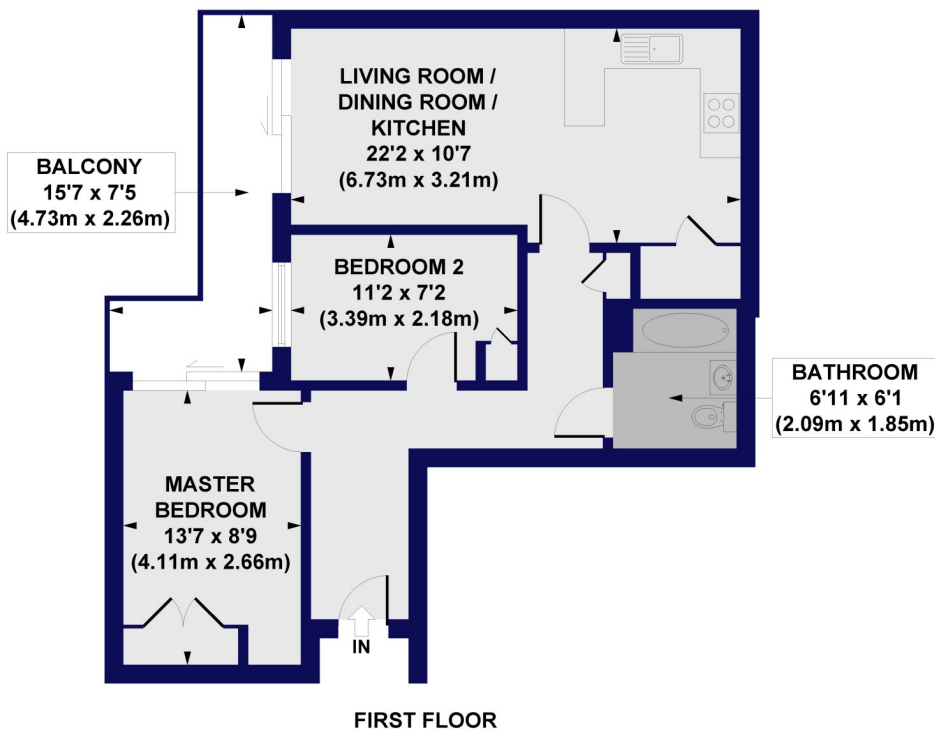
- Modern gated development
- First floor apartment
- Two bedrooms
- Open plan kitchen/living area
- Balcony
- Allocated underground parking
- Lift-in-Block
- Long lease





Holdsworth Lodge, Lankaster Gardens, N2

Approx. Gross Internal Floor Area 615 sq. ft / 57.12 sq. m



All measurements of walls, doors, windows, fittings and appliances, including their size and location, are shown as standard sizes and do not constitute any warranty or representation by the seller, their agent or CP Creative. Any intending purchaser must satisfy himself by inspection or otherwise as to the correctness of the information contained in these plans. This plan is for illustrative purposes only and should be used as such by any prospective purchasers.

Winkworth

This floorplan is for illustration purposes only and is not to scale. The position and size of doors, windows, appliances and other features are approximate.

Score	Energy rating	Current	Potential
92+	A		
81-91	B	84 B	84 B
69-80	C		
55-68	D		
39-54	E		
21-38	F		
1-20	G		

Tenure: Leasehold

Term: 110 year and 7 months

Service Charge: £2256 per annum

Ground Rent: £ 250 Annually (subject to increase)

Council Tax Band: D

Where no figures are shown, we have been unable to ascertain the information. All figures that are shown were correct at the time of printing.

Winkworth

Finchley | 020 8349 3388 | finchley@winkworth.co.uk

for every step...

winkworth.co.uk

Winkworth wishes to inform prospective buyers and tenants that these particulars are a guide and act as information only. All our details are given in good faith and believed to be correct at the time of printing but they don't form part of an offer or contract. No Winkworth employee has authority to make or give any representation or warranty in relation to this property. All fixtures and fittings, whether fitted or not are deemed removable by the vendor unless stated otherwise and room sizes are measured between internal wall surfaces, including furnishings.