

CITY POINT, 86 CHESHIRE STREET, E2  
£595,000 LEASEHOLD

## A WONDERFUL TOP FLOOR TWO DOUBLE BEDROOM/TWO BATHROOM APARTMENT WITH PRIVATE TERRACE

Shoreditch | 020 7749 7650 | shoreditch@winkworth.co.uk

**Winkworth**





## DESCRIPTION:

A fantastic two double bedroom, two-bathroom third floor apartment just off Brick Lane with private terrace. The property boasts a wonderful open plan living/dining room leading to the large terrace with wonderful views, fully fitted kitchen and lots natural light throughout. On entering the property, you are greeted with a spacious hallway leading to two double bedrooms, main bathroom, and finally leading to the open plan kitchen/lounge and terrace. The property also benefits from secure, private underground parking.

The area surrounding area offers a vast range of local amenities, shops, cafes, bars and restaurants with Brick Lane, Shoreditch high street and Liverpool Street all within proximity as well as Whitechapel High Street, Aldgate and Aldgate East. There are also fantastic transport links with Whitechapel Station (Crossrail) Aldgate and Aldgate East (Hammersmith & City, District, Circle and Metropolitan lines), Liverpool Street Station and Shoreditch High Street Overground all close by.

**Winkworth**

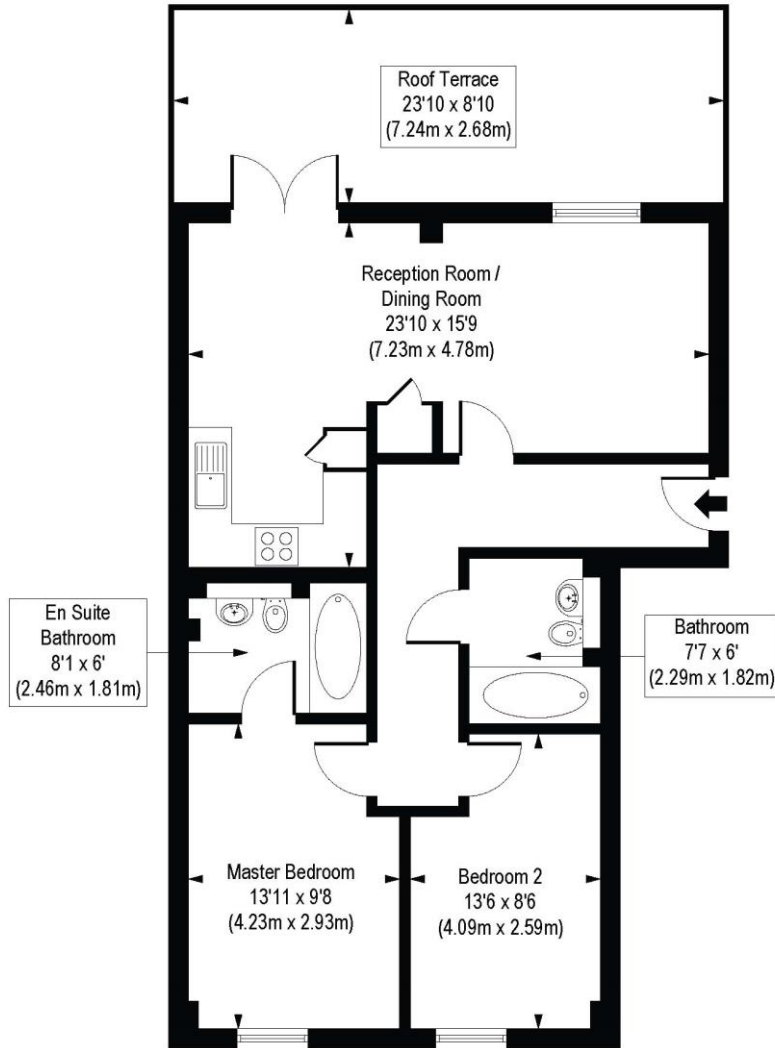




**Winkworth**

# Cheshire Street, E2

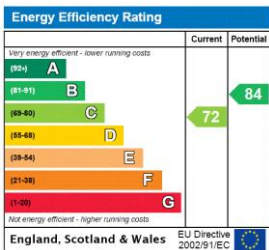
Approx. Gross Internal Floor Area 762 sq. ft / 70.82 sq. m



Third Floor

COMPLIANT WITH RICS CODE OF MEASURING PRACTICE. Floorplan is for illustrative purposes only and is not to scale. Every attempt has been made to ensure the accuracy of the floorplan shown, however all measurements, fixtures, fittings and data shown are an approximate interpretation for illustrative purposes only. Liability for errors, omissions or mis-statement through negligence or otherwise is hereby excluded.

This floorplan is for illustration purposes only and is not to scale. The position and size of doors, windows, appliances and other features are approximate.



Shoreditch | 020 7749 7650 | shoreditch@winkworth.co.uk



winkworth.co.uk

See things differently

Winkworth wishes to inform prospective buyers and tenants that these particulars are a guide and act as information only. All our details are given in good faith and believed to be correct at the time of printing but they don't form part of an offer or contract. No Winkworth employee has authority to make or give any representation or warranty in relation to this property. All fixtures and fittings, whether fitted or not are deemed removable by the vendor unless stated otherwise and room sizes are measured between internal wall surfaces, including furnishings.