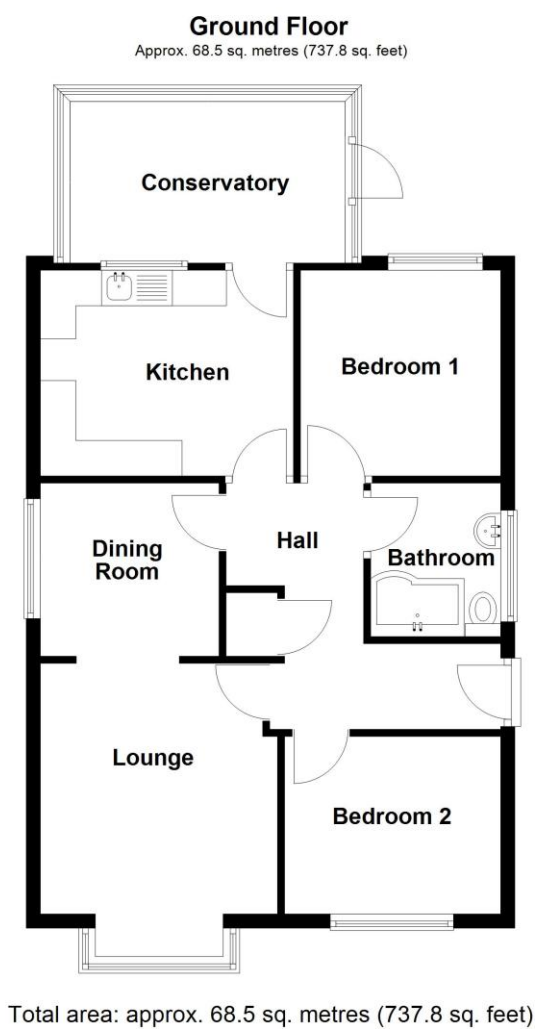


EPC TO FOLLOW



## 1 Richards Close, Heckington, Lincolnshire, NG34 9UE

£205,000 Freehold

Tucked away in a quiet cul-de-sac just off Sleaford Road in Heckington, is this well-presented Two Bedroom detached bungalow.

The property boasts UPVC double glazing, gas central heating, a detached garage, and ample parking, making it an ideal home for those seeking a spacious Bungalow in a great village and close to amenities.

NO CHAIN | TWO DOUBLE BEDROOMS | LOUNGE & DINING ROOM | CONSERVATORY | AMPLE PARKING | DETACHED GARAGE | CLOSE TO AMENITIES | POPULAR VILLAGE LOCATION



The accommodation comprises of Entrance Hall, Lounge, Dining Room, Two Double Bedrooms, Conservatory and Family Bathroom.

The lounge benefits from a bay window and gas fire, with the kitchen being well equipped with fitted units and integrated appliances. The addition of the conservatory offers an additional relaxing space that opens directly onto the garden.

Situated in the ever-popular village of Heckington, the home benefits from excellent local amenities including shops, pubs, a post office, doctors' surgery, school, and rail connections to Sleaford, Boston, Grantham, Nottingham, and Lincoln.



## ACCOMMODATION

Entrance Hall

Living Room - 12'11" x 10'11" (3.94m x 3.33m)

Dining Room - 8'3" x 8' (2.51m x 2.44m)

Kitchen - 11'8" x 9'10" (3.56m x 3m)

Conservatory - 12'6" x 7'6" (3.8m x 2.29m)

Bedroom One - 11' x 9'9" (3.35m x 2.97m)

Bedroom Two - 10' x 8'2" (3.05m x 2.5m)

Family Bathroom

Garage

## LOCAL AUTHORITY

North Kesteven District Council

## TENURE

Freehold

## COUNCIL TAX BAND

B

