



37 HARDING PLACE, WOKINGHAM, BERKSHIRE, RG40 1BX
£450,000 FREEHOLD

SITUATED WITHIN WALKING DISTANCE OF WOKINGHAM TOWN CENTRE (0.3 OF A MILE) AND ALL ITS AMENITIES IS THIS SPACIOUS 2 BEDROOM HOUSE IN HARDING PLACE, DESIGNED FOR INDEPENDENT LIVING FOR THE OVER 55'S.

Winkworth

Wokingham | 01189 072777 | wokingham@winkworth.co.uk

for every step...

winkworth.co.uk



DESCRIPTION:

Constructed in 2006 and totalling over 1000sq ft. this spacious cottage is positioned in a secure gated community for over the 55s and is offered with no onward chain complications. The accommodation comprises dual aspect living room, cloakroom, refitted kitchen with fitted appliances, two double bedrooms with a dressing room and en-suite to the master plus a further family bathroom. Externally there are pretty and well-kept grounds, allocated parking along with visitor parking and a communal lounge for the residents.

AT A GLANCE

- Gated community
- Over 55's
- 0.3 miles from the town centre
- 2 double bedrooms
- Parking
- Service charge: circa £4500.00 per annum tbc
- Council tax band E Wokingham
- Broadband available superfast 80Mbps
- Mobile coverage EE, Vodafone, O2 & Three
- No chain

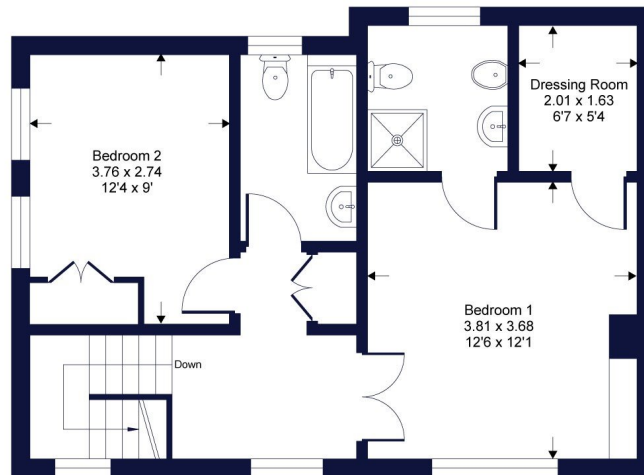
Tenure: Freehold



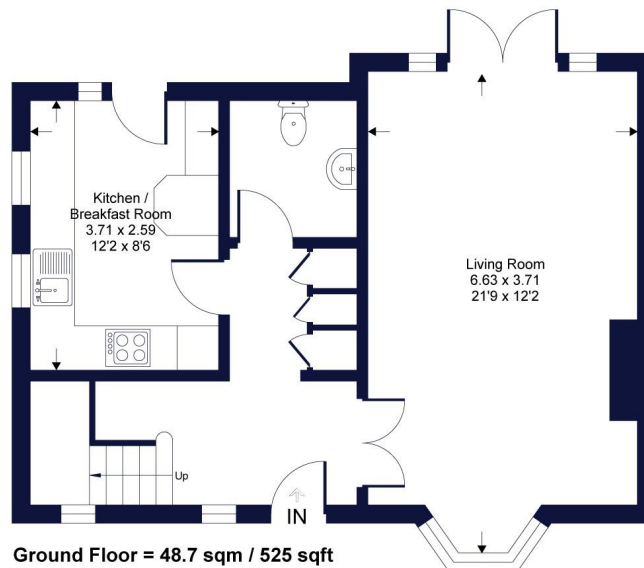
Harding Place

Winkworth

Approximate Gross Internal Area = 96.8 sq m / 1042 sq ft



First Floor = 48 sqm / 517 sqft



Ground Floor = 48.7 sqm / 525 sqft

Whilst every attempt has been made to ensure the accuracy of the floor plan contained here, measurements of doors, windows, rooms and any other items are approximate and no responsibility is taken for any error, omission or mis-statement. This plan is for illustrative purposes only and should be used as such by any prospective purchaser.

This floorplan is for illustration purposes only and is not to scale. The position and size of doors, windows, appliances and other features are approximate.

Wokingham | 01189 072777 | wokingham@winkworth.co.uk

winkworth.co.uk

Winkworth wishes to inform prospective buyers and tenants that these particulars are a guide and act as information only. All our details are given in good faith and believed to be correct at the time of printing but they don't form part of an offer or contract. No Winkworth employee has authority to make or give any representation or warranty in relation to this property. All fixtures and fittings, whether fitted or not are deemed removable by the vendor unless stated otherwise and room sizes are measured between internal wall surfaces, including furnishings.

We are required by law to conduct anti-money laundering checks on all those buying a property. Whilst we retain responsibility for ensuring checks and any ongoing monitoring are carried out correctly, the initial checks are carried out on our behalf by Landmark who will contact you once you have had an offer accepted on a property you wish to buy. The cost of these checks is £24 per person and this will need to be paid by you in advance of us issuing a memorandum of sale, directly to Landmark, and is non-refundable.

Winkworth

for every step...