

LONDINIUM TOWER, MANSELL STREET, LONDON
£550,000 LEASEHOLD

STYLISH 838SQFT TWO-BEDROOM APARTMENT NEAR TOWER BRIDGE

Shoreditch | 020 7749 7650 | shoreditch@winkworth.co.uk

Winkworth

winkworth.co.uk

See things differently



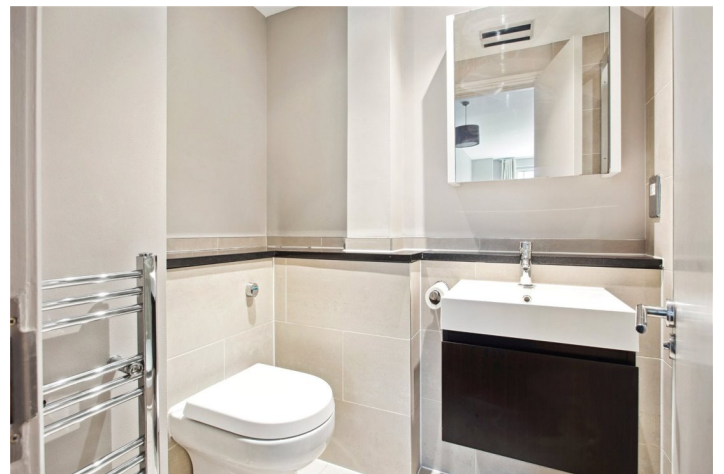
DESCRIPTION:

This stunning two-bedroom apartment, located just moments from the iconic Tower Bridge, offers a perfect blend of modern living and exceptional convenience. Situated on the first floor, this 838 sqft property boasts a spacious layout with two generously sized bedrooms, including an en-suite bathroom for added comfort and privacy.

The property is finished to a high standard, featuring a sleek and modern design throughout. Its South-West aspect ensures an abundance of natural light, creating a bright and inviting living space. The apartment is further enhanced by the services of a porter/concierge.

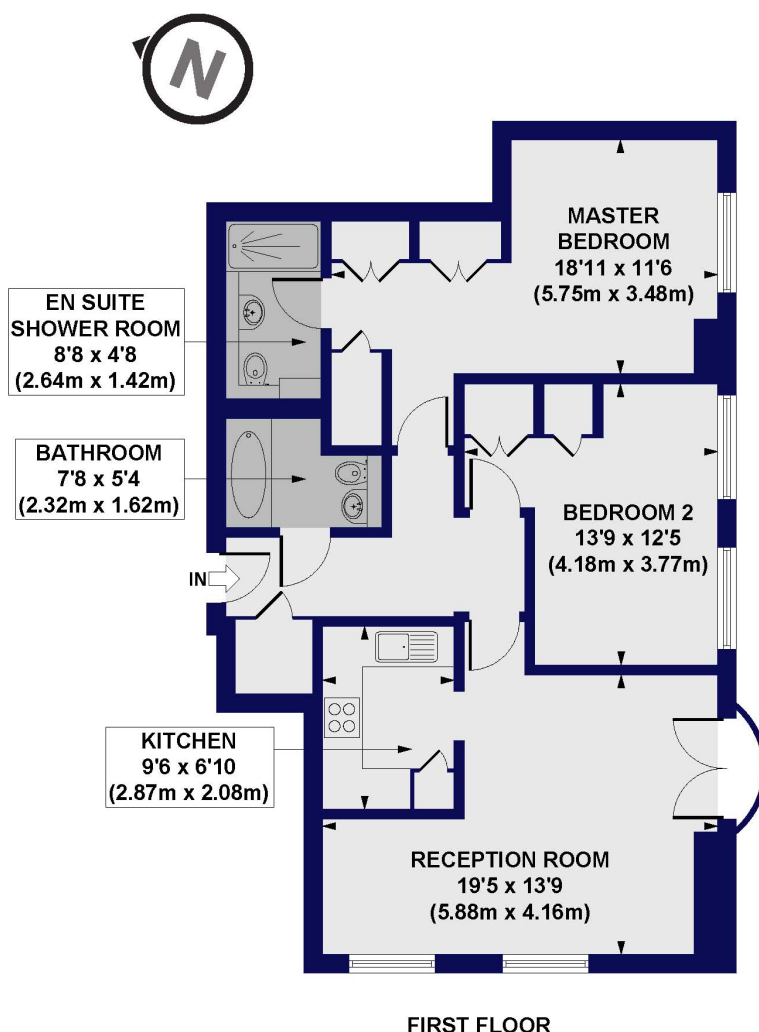
With Tower Hill Station just 0.3 miles away and Aldgate East Station 0.3 miles away, this home is perfect for those looking to enjoy both the tranquillity of a residential area and the vibrancy of city life. Ideal for professionals or anyone seeking a stylish and practical base near one of London's most famous landmarks.

Winkworth



Winkworth

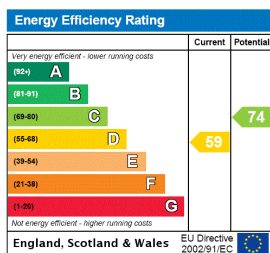
Londinium Tower, Mansell Street, E1
Approx. Gross Internal Floor Area 838 sq. ft / 77.83 sq. m



All measurements of walls, doors, windows, fittings and appliances, including their size and location, are shown as standard sizes and do not constitute any warranty or representation by the seller, their agent or CP Creative. Any intending purchaser must satisfy himself by inspection or otherwise as to the correctness of the information contained in these plans. This plan is for illustrative purposes only and should be used as such by any prospective purchasers.

Winkworth

This floorplan is for illustration purposes only and is not to scale. The position and size of doors, windows, appliances and other features are approximate.



Shoreditch | 020 7749 7650 | shoreditch@winkworth.co.uk

Winkworth

winkworth.co.uk

See things differently

Winkworth wishes to inform prospective buyers and tenants that these particulars are a guide and act as information only. All our details are given in good faith and believed to be correct at the time of printing but they don't form part of an offer or contract. No Winkworth employee has authority to make or give any representation or warranty in relation to this property. All fixtures and fittings, whether fitted or not are deemed removable by the vendor unless stated otherwise and room sizes are measured between internal wall surfaces, including furnishings.