



WILLIAM COURT, NW8 £1,000,000 SOLE AGENT Subject to contract

A well-proportioned two bedroom, two bathroom, third floor apartment presented in good decorative order throughout. William Court is a well maintained building and offers 24-hour portage and use of a lovely communal decked garden. This popular block is located within 500 metres of the shops and restaurants of St John's Wood High Street.

Leasehold | Principal Bedroom With En Suite Shower Room | Second Bedroom | Bathroom | Reception Room | Kitchen | 24-Hour Portage | Communal Garden | Passenger Lift | Video Entrance Phone | communal heating and hot water

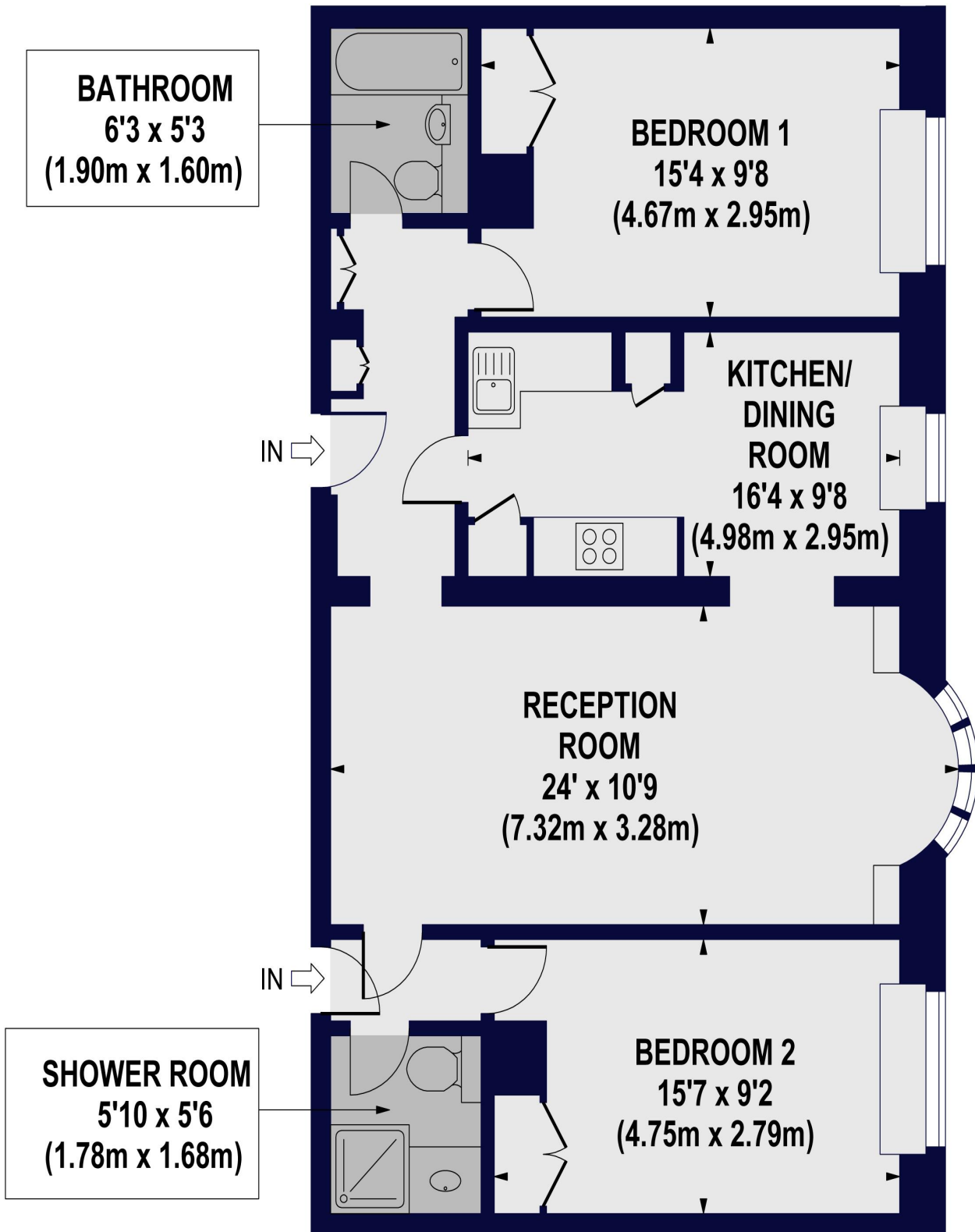


[winkworth.co.uk/st-johns-wood](https://www.winkworth.co.uk/st-johns-wood)

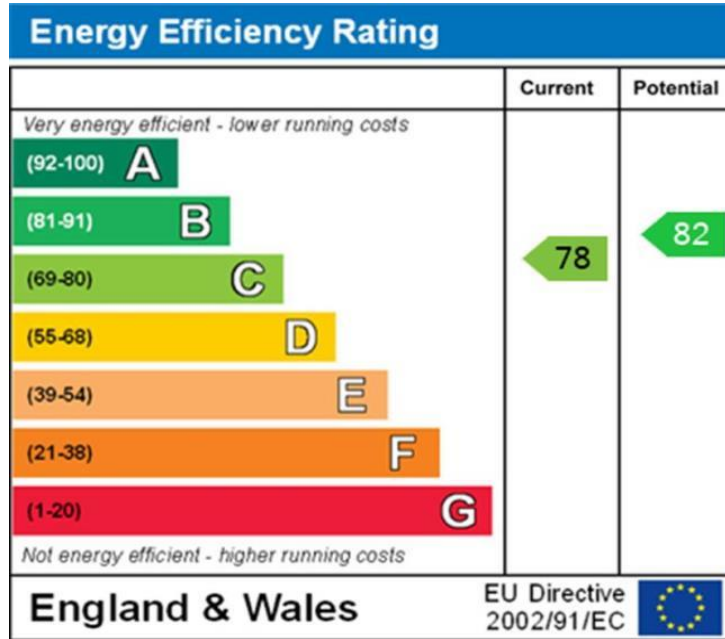
VIRTUAL TOUR: <https://my.matterport.com/show/?m=18NjpvG3Fa3>

For every step...





Third FLOOR



Tenure: Leasehold

Term: 125 years from 25/03/1997

Service Charge: £10,926.96 per annum

Current Ground Rent: £225.00 Annually
(Subject to increase)

NOTES:

Where no figures are shown, we have been unable to ascertain the information. All figures that are shown were correct at the time of printing.

NB: These particulars are not an offer or contract, nor part of one. You should not rely on statements by Winkworth in the particulars or by word of mouth or in writing "information" as being factually accurate about the property, its condition or its value. Neither Winkworth nor any joint agent has any authority to make any representations about the property, and accordingly any information given is entirely without responsibility on the part of the agents, seller(s) or lessor(s). These particulars are prepared on the basis of the information supplied by our client and are a rough guide for information only. The photographs show only certain parts of the property. We are not able to check all of the information and therefore are unable to guarantee accuracy. All interested parties are therefore advised to undertake all necessary inspections and checks that they deem appropriate. Where displayed, the square footage is taken from the floor plans, which are created by an independent supplier. These measurements are approximate and included for illustrative purposes only. The measurements may vary. Winkworth does not make any representation as to the accuracy of these measurements and you should seek to verify them for yourself. Winkworth accept no liability for any loss you may suffer if you rely on these measurements. All fixtures and fittings, whether fitted or not are deemed removable by the vendor unless stated. Any reference to alterations to, or use of, any part of the property does not mean that any necessary planning, building regulations or other consent has been obtained. Amenities and appliances have not been tested.

St John's Wood | 103-104 St John's Wood Terrace, London NW8 6PL
020 7586 7001 | stjohnswood@winkworth.co.uk

