

BURROWS ROAD, NW10  
**£2,400 PER MONTH UNFURNISHED**

**PRESENTING THIS SUBSTANTIAL GROUND FLOOR  
 TWO BEDROOM GARDEN FLAT TO THE LETTINGS  
 MARKET.**

Kensal Rise & Queens Park | 0208 960 4947 | [kensalrise@winkworth.co.uk](mailto:kensalrise@winkworth.co.uk)

**Winkworth**

for every step...

[winkworth.co.uk](http://winkworth.co.uk)





### DESCRIPTION:

Presenting this substantial ground floor two bedroom conversion to the lettings market. Wider than average this apartment has an abundance of period features throughout and has been tastefully decorated.

Comprising of two spacious double bedrooms, good size bathroom, fully fitted kitchen and beautiful reception that over looks a well maintained south facing private garden with decking. Additional features include wooden flooring in the reception area and side access to the garden.

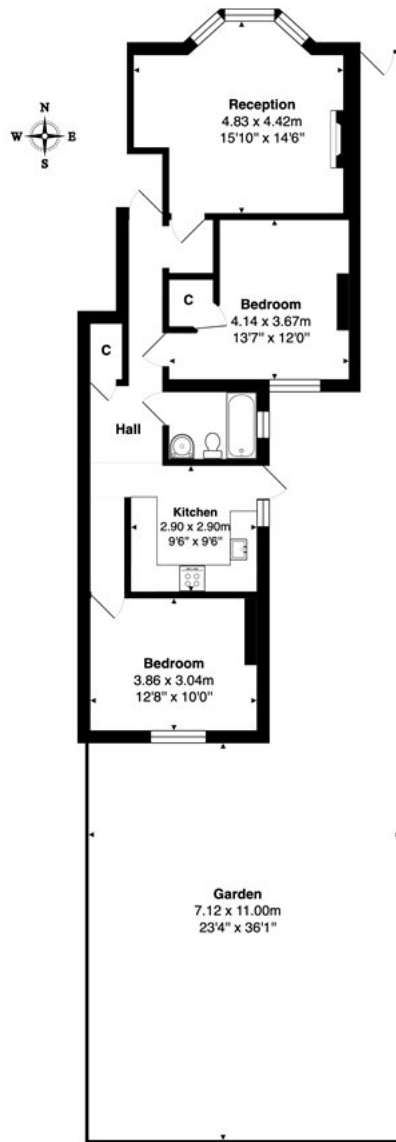
Council tax - (Band D)

Ward - Kensal Green







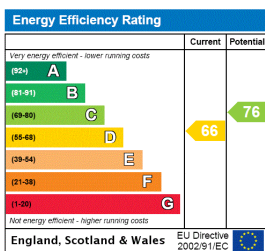


Ground Floor

Total Area: 69.4 m<sup>2</sup> ... 747 ft<sup>2</sup> (excluding garden)

All measurements are approximate and for display purposes only

This floorplan is for illustration purposes only and is not to scale. The position and size of doors, windows, appliances and other features are approximate.



**Deposit:** 5 weeks rent

**Holding Deposit:** 1 weeks rent

**Council Tax Band:** D

Where no figures are shown, we have been unable to ascertain the information. All figures that are shown were correct at the time of printing.

**Winkworth**

Kensal Rise & Queens Park | 0208 960 4947 | kensalrise@winkworth.co.uk

for every step...

[winkworth.co.uk](https://www.winkworth.co.uk)

Winkworth wishes to inform prospective buyers and tenants that these particulars are a guide and act as information only. All our details are given in good faith and believed to be correct at the time of printing but they don't form part of an offer or contract. No Winkworth employee has authority to make or give any representation or warranty in relation to this property. All fixtures and fittings, whether fitted or not are deemed removable by the vendor unless stated otherwise and room sizes are measured between internal wall surfaces, including furnishings.