



DAYWORTH MEWS, READING, BERKSHIRE, RG30 2RR
£950 PER MONTH UNFURNISHED

ONE BEDROOM GROUND FLOOR MAISONETTE LOCATED TO THE WEST OF READING TOWN CENTRE

Reading | 0118 4022 300 | reading@winkworth.co.uk

Winkworth

for every step...

winkworth.co.uk



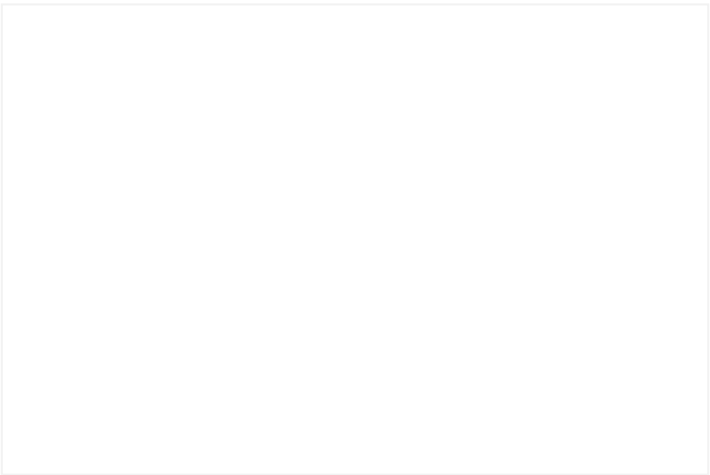
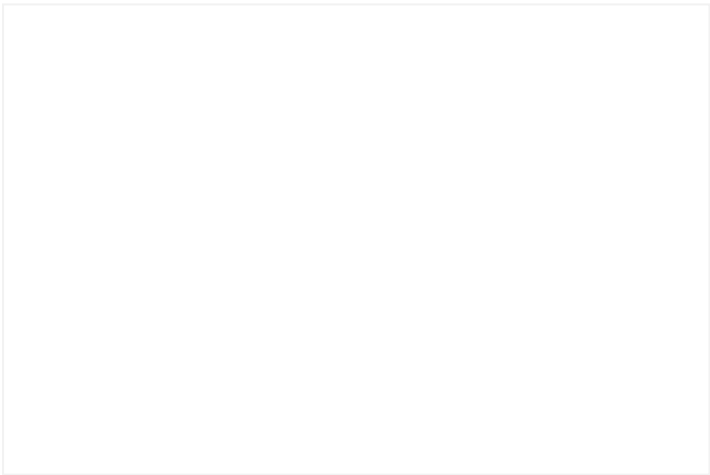
DESCRIPTION:

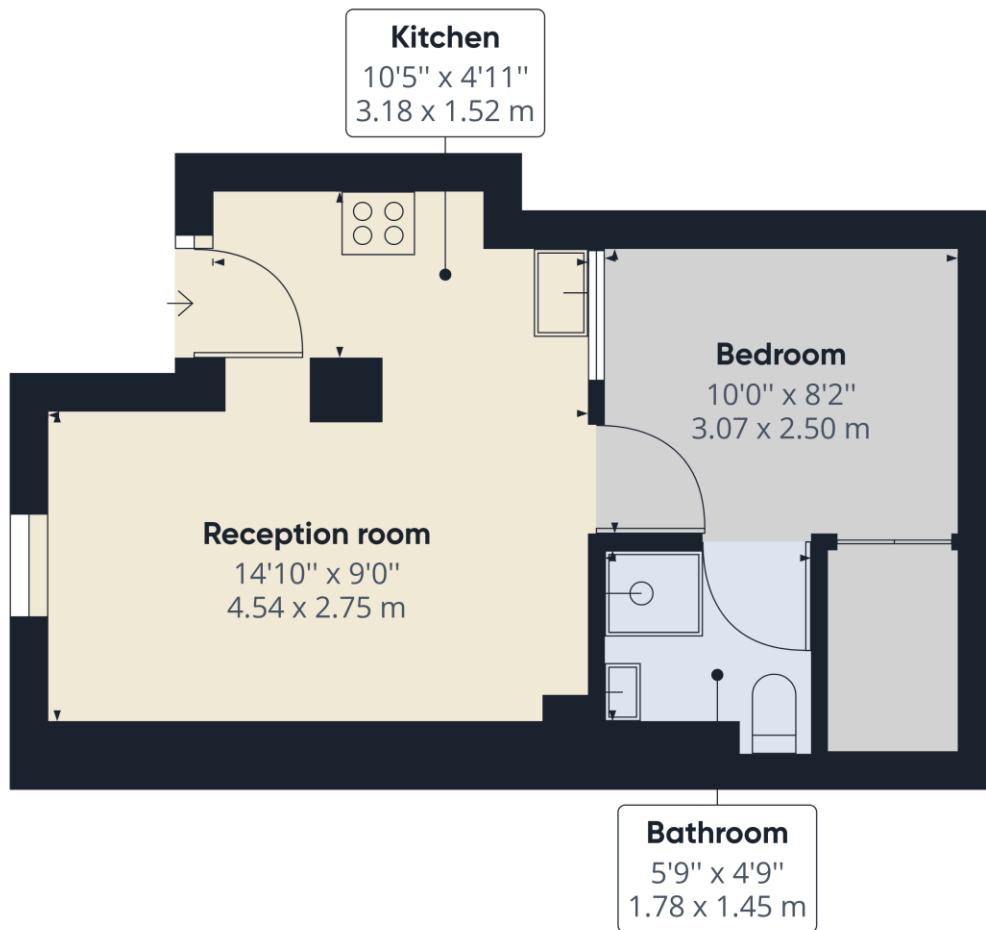
One bedroom ground floor maisonette located to the west of Reading town centre. The property comprises of an open plan lounge/kitchen, one double bedroom with a built in wardrobe and a shower room. Benefits include allocated parking and bike storage. Available 18th October 2025. Unfurnished.

AT A GLANCE

- Ground floor maisonette
- One double bedroom
- Open plan living area
- Council tax band C
- Allocated parking
- Available 18th October
- Unfurnished







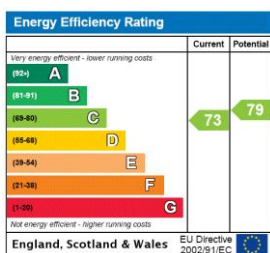
Approximate total area⁽¹⁾
330.68 ft²
30.72 m²

(1) Excluding balconies and terraces

While every attempt has been made to ensure accuracy, all measurements are approximate, not to scale. This floor plan is for illustrative purposes only.

GIRAFFE 360

This floorplan is for illustration purposes only and is not to scale. The position and size of doors, windows, appliances and other features are approximate.



Deposit: £1,096.15

Holding Deposit: £219.23

Council Tax Band: C

Where no figures are shown, we have been unable to ascertain the information. All figures that are shown were correct at the time of printing.

Winkworth

for every step...

Reading | 0118 4022 300 | reading@winkworth.co.uk

winkworth.co.uk

Winkworth wishes to inform prospective buyers and tenants that these particulars are a guide and act as information only. All our details are given in good faith and believed to be correct at the time of printing but they don't form part of an offer or contract. No Winkworth employee has authority to make or give any representation or warranty in relation to this property. All fixtures and fittings, whether fitted or not are deemed removable by the vendor unless stated otherwise and room sizes are measured between internal wall surfaces, including furnishings.