



OXFORD GARDENS, W10
£3,100 PER MONTH

STUNNING LATERAL TWO BEDROOM APARTMENT WITH PRIVATE TERRACE

North Kensington | 020 7792 5000 | northkensington@winkworth.co.uk

Winkworth

for every step...

winkworth.co.uk



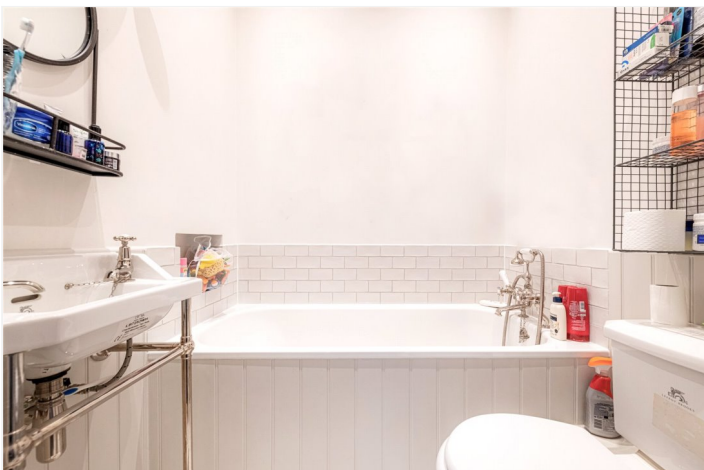
DESCRIPTION:

A beautifully bright, lateral apartment to let on this quiet tree lined residential street in North Kensington W10.

Set within this well maintained Victorian House, the apartment boasts a large living room with gorgeous high ceilings and period features ,modern bathroom , en-suite shower room, two well-proportioned bedrooms and a large private terrace.

AT A GLANCE

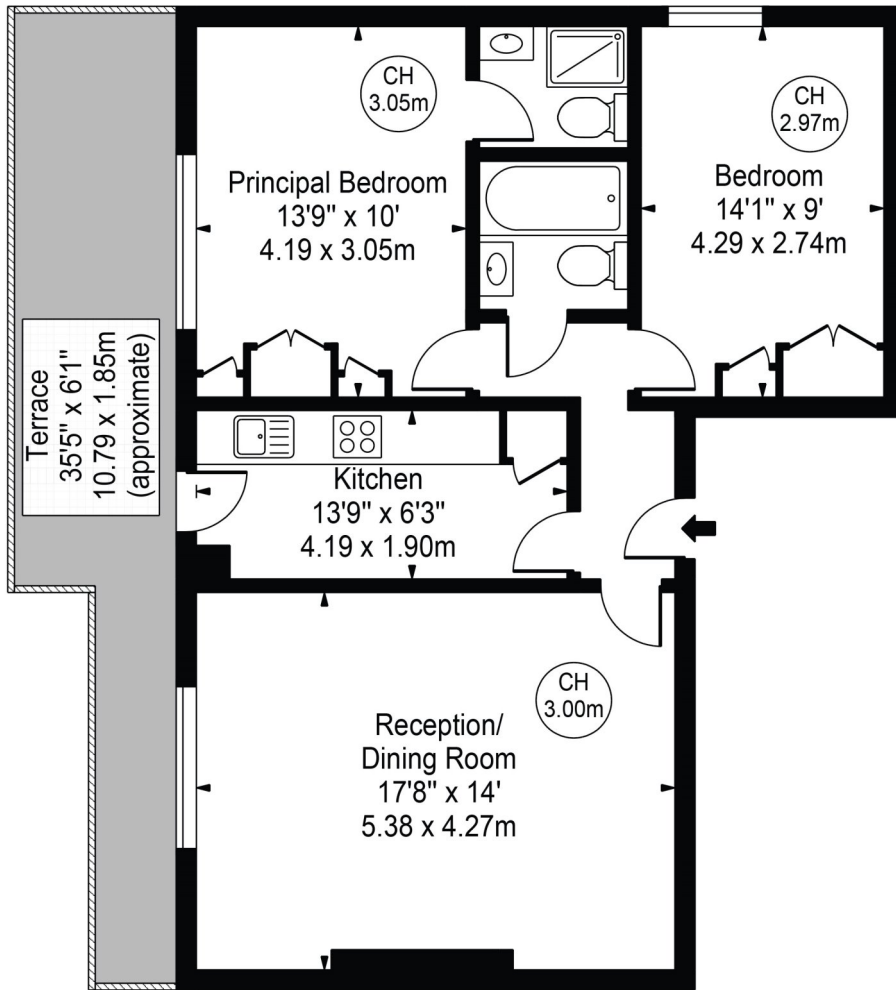
- HIGH CEILINGS
- PREMIER ROAD IN NORTH KENSINGTON
- PRIVATE TERRACE
- BRIGHT
- SPACIOUS





Oxford Gardens

Approx. Gross Internal Area 728 Sq Ft - 67.63 Sq M 

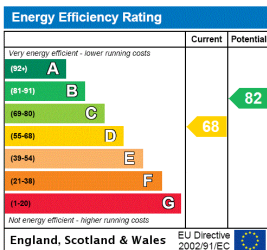


First Floor

For Illustration Purposes Only - Not To Scale

This floor plan should be used as a general outline for guidance only and does not constitute in whole or in part an offer or contract. Any intending purchaser or lessee should satisfy themselves by inspection, searches, enquiries and full survey as to the correctness of each statement. Any areas, measurements or distances quoted are approximate and should not be used to value a property or be the basis of any sale or let. Copyright Morriarti Photography & Design LTD

This floorplan is for illustration purposes only and is not to scale. The position and size of doors, windows, appliances and other features are approximate.



North Kensington | 020 7792 5000 | northkensington@winkworth.co.uk



for every step...

winkworth.co.uk

Winkworth wishes to inform prospective buyers and tenants that these particulars are a guide and act as information only. All our details are given in good faith and believed to be correct at the time of printing but they don't form part of an offer or contract. No Winkworth employee has authority to make or give any representation or warranty in relation to this property. All fixtures and fittings, whether fitted or not are deemed removable by the vendor unless stated otherwise and room sizes are measured between internal wall surfaces, including furnishings.