



**11 Victoria Road, Eastleigh, Hampshire SO50 4JG**

**Winkworth**



## THREE-BEDROOM FAMILY HOME

11 Victoria Road is an end of terrace three-bedroom property in a great location. The property is situated within a short distance of Eastleigh town centre, with its extensive range of amenities including the Swan Centre shopping mall, Vue cinema and plenty of restaurants. The property also offers great access to the mainline train station, less than a mile away. Southampton airport, bus routes and commuter links via the M27 and M3, are all within easy reach.

Set over two floors, this three-bedroom property benefits from generous living accommodation. Having been rented over previous years the property is in need of some updating, giving the purchaser the opportunity to create their own home from a blank canvas. The property is entered via the hallway which provides access to the downstairs living accommodation. To the front elevation is the sitting room which benefits from a large bay window making this room pleasantly light and airy. The dining room leads off the sitting room which in turn leads onto the kitchen. The kitchen is to the rear, where there is also a bathroom and separate WC. The first floor accommodates two generously sized double bedrooms with the third bedroom being a single. Upstairs also features a WC.

The large rear garden is fully enclosed, mainly laid to lawn, with a large paved area. The garage is to the rear of the garden.

The property is offered with no forward chain.



# Winkworth

**Address: 11 Victoria Road, Eastleigh,  
Hampshire SO50 4JG**

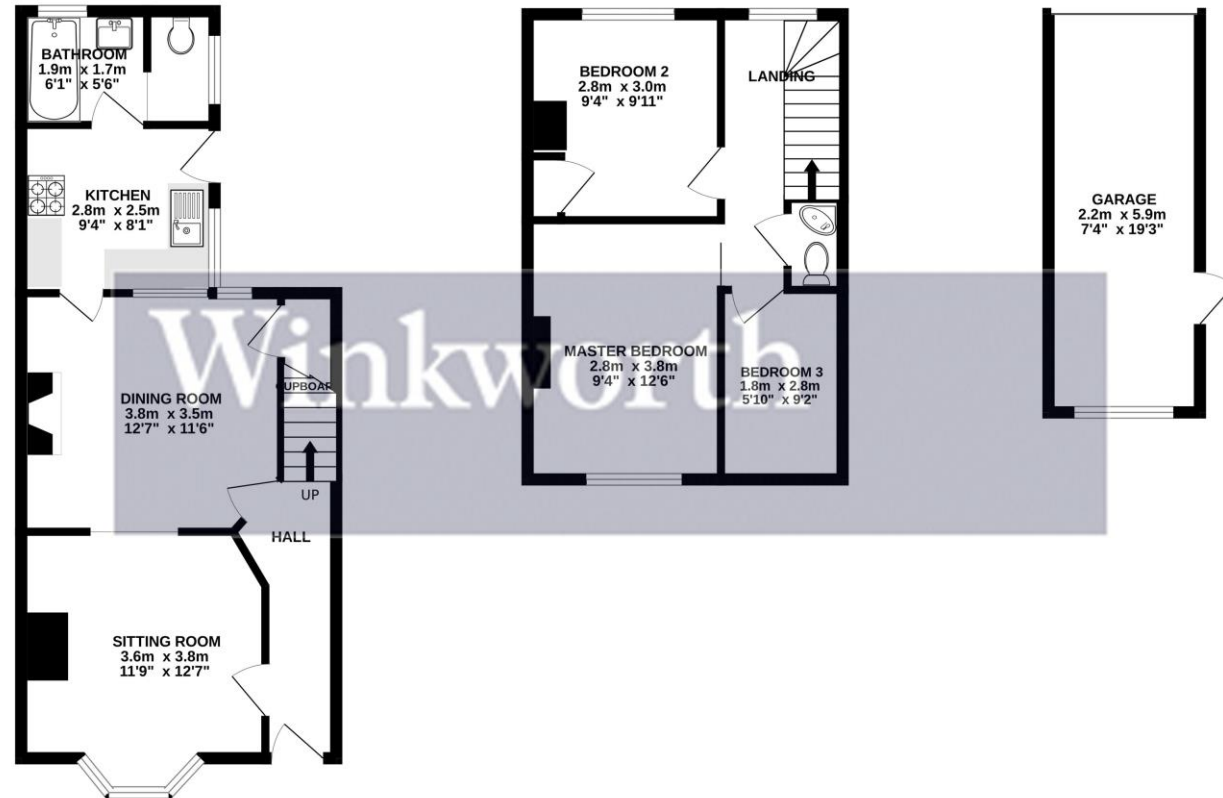
**Council Tax – 'C'  
FREEHOLD  
EPC – 'TBC'**



GROUND FLOOR  
42.9 sq.m. (462 sq.ft.) approx.

1ST FLOOR  
31.1 sq.m. (334 sq.ft.) approx.

2ND FLOOR  
13.1 sq.m. (141 sq.ft.) approx.



TOTAL FLOOR AREA: 87.0 sq.m. (937 sq.ft.) approx.  
Measurements are approximate. Not to scale. Illustrative purposes only  
Made with Metropix ©2023

## Winkworth Romsey

18 Market Place, Romsey, Hampshire, SO51 8NA  
01794 511911 | romsey@winkworth.co.uk

[winkworth.co.uk/romsey](http://winkworth.co.uk/romsey)

## Winkworth Winchester

2 Black Swan Buildings, Southgate Street,  
Winchester, Hampshire, SO23 9DT  
01962 866777 | winchester@winkworth.co.uk

## Winkworth Mayfair & Country House Department

11 Berkeley Street, Mayfair, London, W1J 8DS  
020 7871 0589 | countryhouse@winkworth.co.uk

# Winkworth

See things differently