



SELLONS AVENUE, NW10  
**£2,400 PER MONTH UNFURNISHED**

**LARGE THREE BEDROOM GARDEN FLAT WHICH HAS BEEN  
 RECENTLY RENOVATED AND OFFERS SPACIOUS LIVING OVER  
 THE GROUND FLOOR OF THIS VICTORIAN CONVERSION.**

Kensal Rise & Queens Park | 0208 960 4947 | [kensalrise@winkworth.co.uk](mailto:kensalrise@winkworth.co.uk)

**Winkworth**

for every step...

[winkworth.co.uk](http://winkworth.co.uk)



### DESCRIPTION:

UNDER OFFER - New to the letting market this summer comes this three bedroom garden flat. Comprising of three double bedrooms, a large three piece tiled bathroom and large rear open plan kitchen reception with bi-folding doors to a south facing decked private garden.

Benefits include wooden flooring throughout, all new appliances, all rooms offer high ceilings, side access from front to back of the property and rear bike storage.

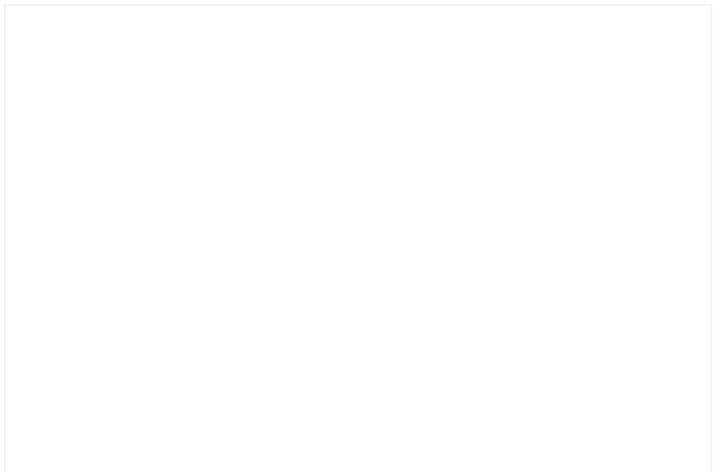
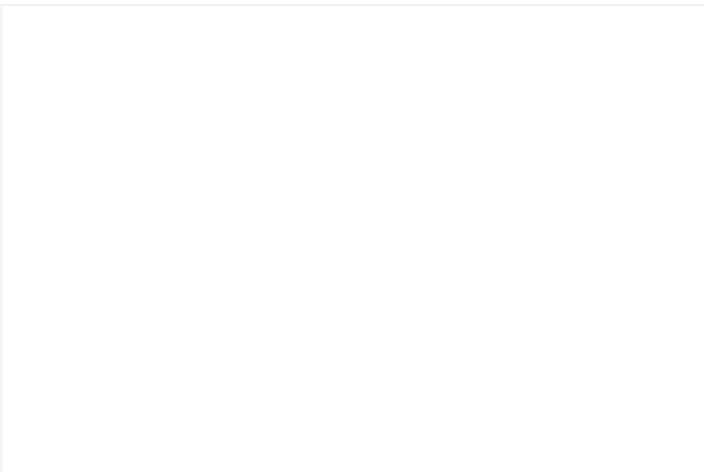
Offered part furnished.

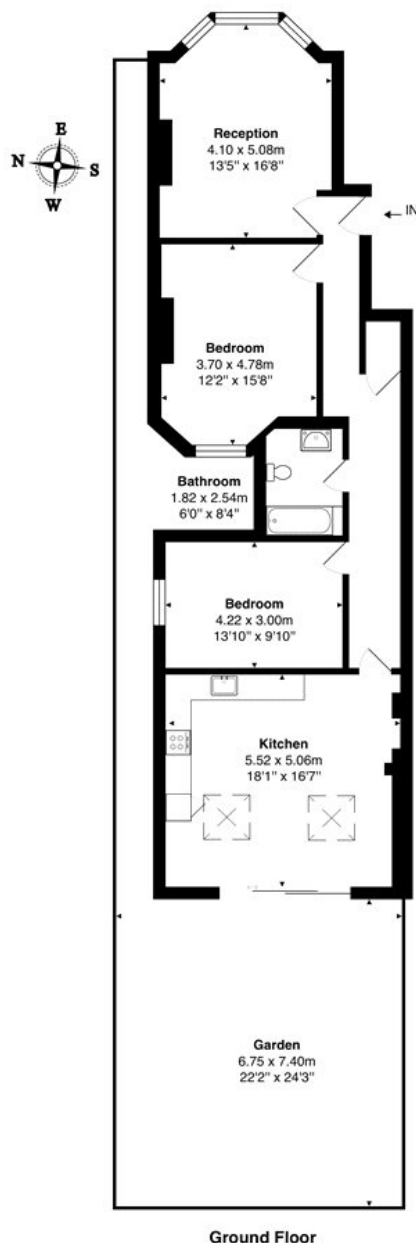
- Kitchen Table
- Chest Of Draws
- Storage Unit In The Kitchen

Council tax - (Band C)

Ward - Kensal Green

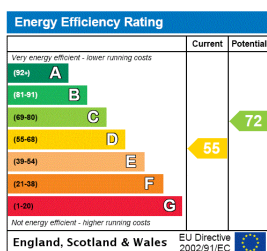






Total Area: 99.9 m<sup>2</sup> ... 1076 ft<sup>2</sup> (excluding garden)  
All measurements are approximate and for display purposes only

This floorplan is for illustration purposes only and is not to scale. The position and size of doors, windows, appliances and other features are approximate.



**Deposit:** 5 weeks rent

**Holding Deposit:** 1 weeks rent

**Council Tax Band:** C

Where no figures are shown, we have been unable to ascertain the information. All figures that are shown were correct at the time of printing.

**Winkworth**

Kensal Rise & Queens Park | 0208 960 4947 | kensalrise@winkworth.co.uk

for every step...

[winkworth.co.uk](https://www.winkworth.co.uk)

Winkworth wishes to inform prospective buyers and tenants that these particulars are a guide and act as information only. All our details are given in good faith and believed to be correct at the time of printing but they don't form part of an offer or contract. No Winkworth employee has authority to make or give any representation or warranty in relation to this property. All fixtures and fittings, whether fitted or not are deemed removable by the vendor unless stated otherwise and room sizes are measured between internal wall surfaces, including furnishings.