



FLAT 1B, BELLE VUE COURT 122D, DEVONSHIRE ROAD, LONDON, SE23
£225,000

Charming studio apartment in a prime location with direct access to a communal garden. This property is perfect for a single professional or couple looking for a convenient city lifestyle. Close to transport links and local amenities.



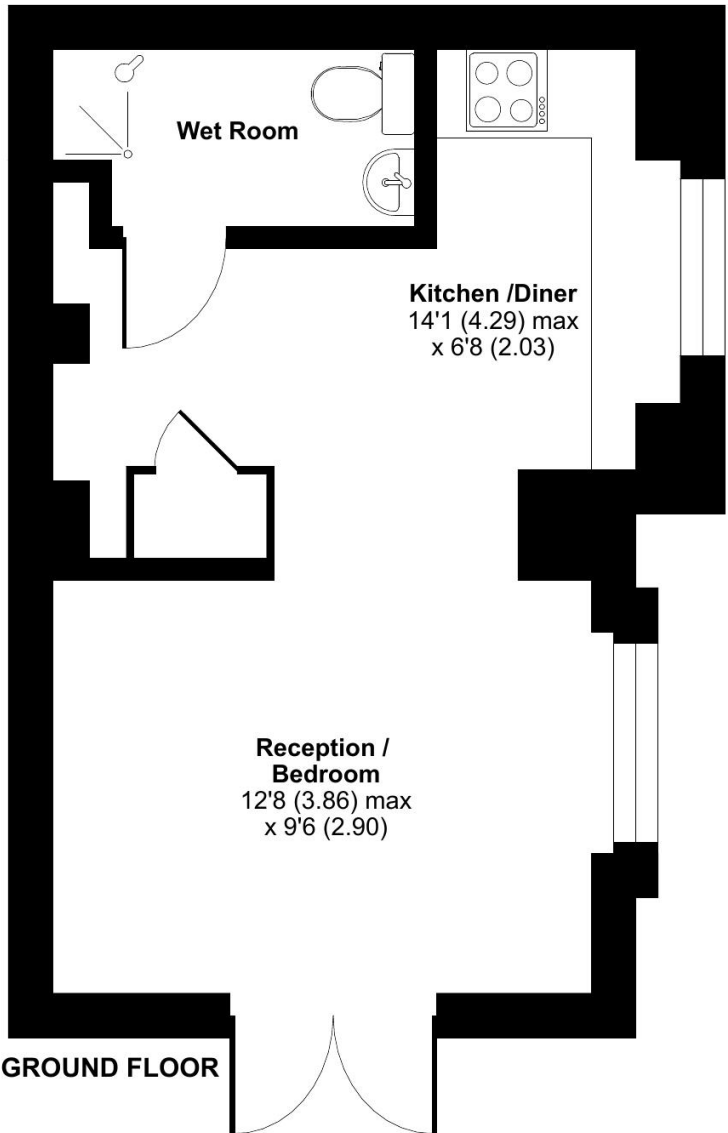
DESCRIPTION:
Nestled in the heart of a vibrant neighbourhood, this charming studio apartment offers a peaceful retreat. The property boasts an open plan living area with high ceilings.





Devonshire Road, London, SE23

Approximate Area = 281 sq ft / 26.1 sq m
For identification only - Not to scale



Floor plan produced in accordance with RICS Property Measurement Standards incorporating International Property Measurement Standards (IPMS2 Residential). © nchecon 2025. Produced for Winkworth Forest Hill and New Cross. REF: 1329010

This floorplan is for illustration purposes only and is not to scale. The position and size of doors, windows, appliances and other features are approximate.

Tenure: Shar of Freehold

Score	Energy rating	Current	Potential
92+	A		
81-91	B		
69-80	C		
55-68	D	67 D	75 C
39-54	E		
21-38	F		
1-20	G		