



WINGFIELD STREET, PECKHAM RYE, SE15
OIEO £1,000,000 FREEHOLD

**WELL PRESENTED THREE DOUBLE BEDROOM
VICTORIAN TERRACE HOUSE OFFERED TO
THE MARKET WITH NO ONWARD CHAIN.**

Dulwich | 020 8299 2722 | dulwich@winkworth.co.uk

Winkworth

winkworth.co.uk

See things differently

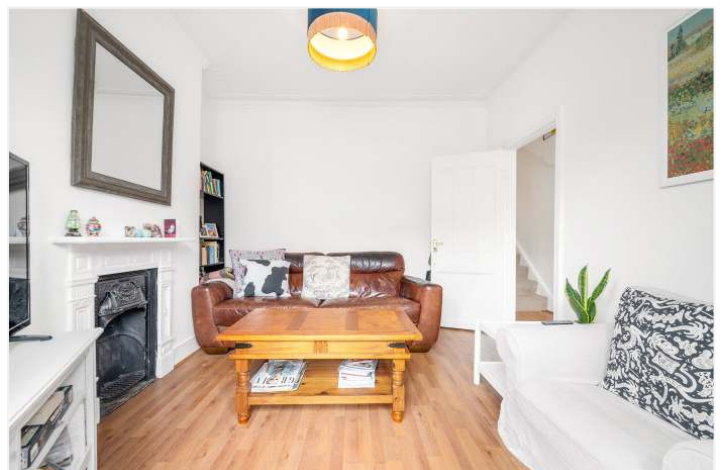


DESCRIPTION:

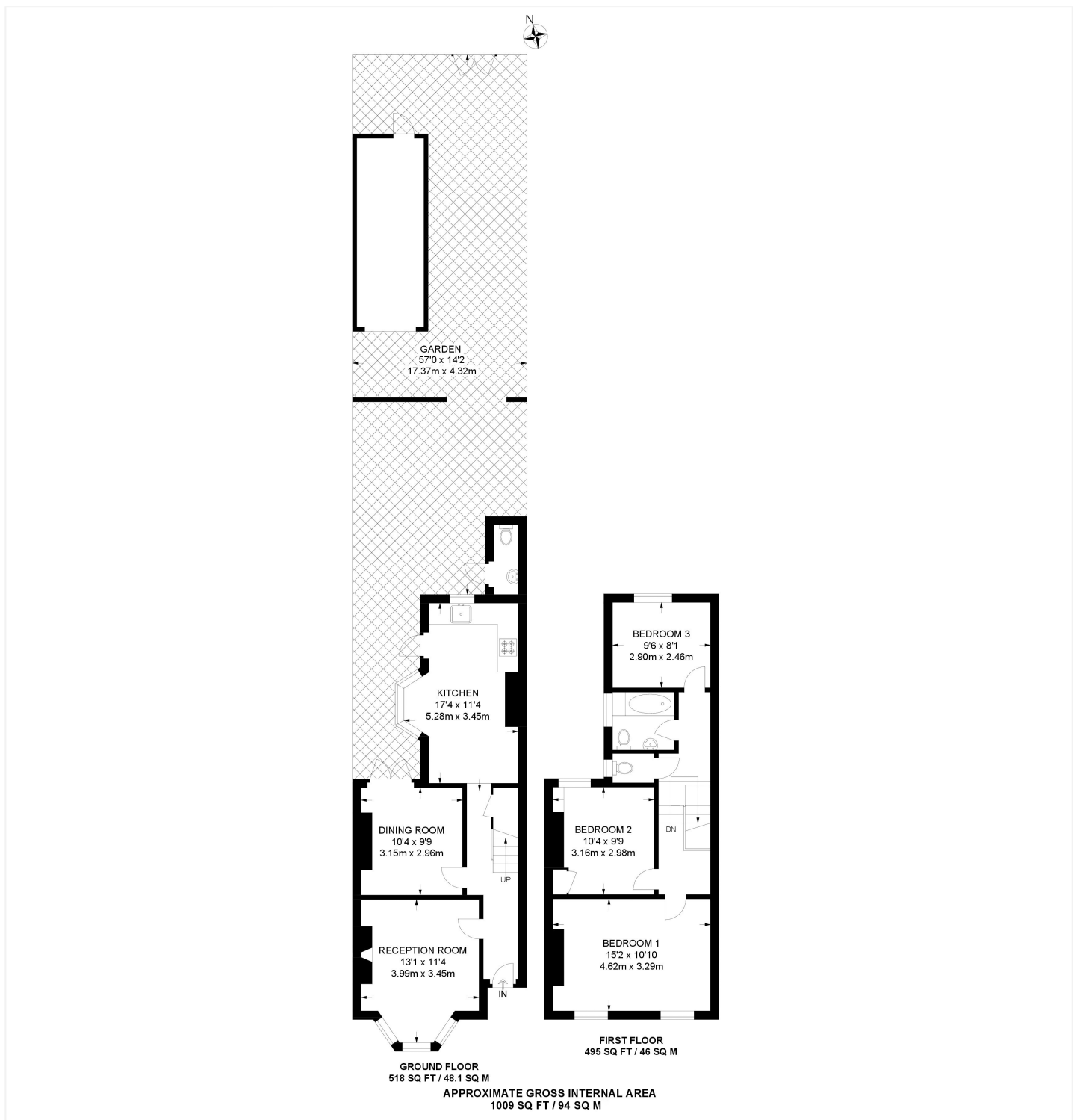
A rarely available Victorian mid terrace with potential to extend. Situated on a highly sought after street, nestled between Bellenden Road and Lordship Lane is this well-presented three-bedroom Victorian terrace house. The property offers three good-sized bedrooms, two receptions, modern bathroom, kitchen and a private garden to the rear. The private garden offers a run-down out house in need of renovation, but with bundles of scope and a rare to the area rear access with a dropped curb. Within easy to the bars, restaurants and shops on Bellenden Road as well as the cinema, restaurants and local eateries on Lordship Lane, this is a fantastic house in a superb location. Transport links are provided via Peckham Rye station for the overground, or a short stroll to East Dulwich station for direct links to London Bridge. School catchments are in abundance with St John and St Clements and the Belham primary schools.

AT A GLANCE

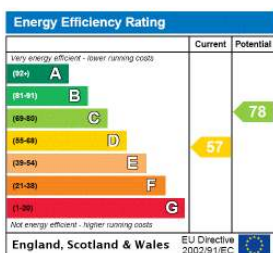
- Three Double Bedrooms
- Victorian Terrace House
- Two Receptions
- Modern Kitchen and Bathroom
- Private Garden With Rear Access
- Potential To Extend STPP
- Chain Free
- Great School Catchment Location







This floorplan is for illustration purposes only and is not to scale. The position and size of doors, windows, appliances and other features are approximate.



Dulwich | 020 8299 2722 | dulwich@winkworth.co.uk

Winkworth

winkworth.co.uk

See things differently

Winkworth wishes to inform prospective buyers and tenants that these particulars are a guide and act as information only. All our details are given in good faith and believed to be correct at the time of printing but they don't form part of an offer or contract. No Winkworth employee has authority to make or give any representation or warranty in relation to this property. All fixtures and fittings, whether fitted or not are deemed removable by the vendor unless stated otherwise and room sizes are measured between internal wall surfaces, including furnishings.