



Emperors Gate, South Kensington, London, SW7

£775 per week* / £3,358.33 per month – Furnished

A three bedroom flat located on the fourth and fifth floor (with lift) of this period building on a quiet garden square.

3 Bedrooms | 1 Reception Room | 2 Bathrooms | Fourth and Fifth Floor with lift | 771 Approx sq ft | EPC: D
PLEASE BE AWARE, THIS FLAT IS NOT SUITABLE FOR 3 SHARERS

APPLICANT FEES MAY BE APPLICABLE
HOLDING DEPOSIT OF 1 WEEK'S RENT
SECURITY DEPOSIT OF 5 WEEKS' RENT

Winkworth

winkworth.co.uk

for every step...



DESCRIPTION

The property benefits from an open-plan kitchen/reception room, two double bedrooms (one with en-suite bathroom), a further single bedroom, a separate shower room and a separate guest WC. The property is available from early September on a furnished basis.

ACCOMMODATION

3 Bedrooms, 1 Reception Room, 2 Bathrooms, Period, Fourth and Fifth Floor Flat, Lift, Furnished, 771 Approx sq ft

COUNCIL TAX BAND

Band F

Please note: the photos were taken from a previous tenancy when the property was newly furnished

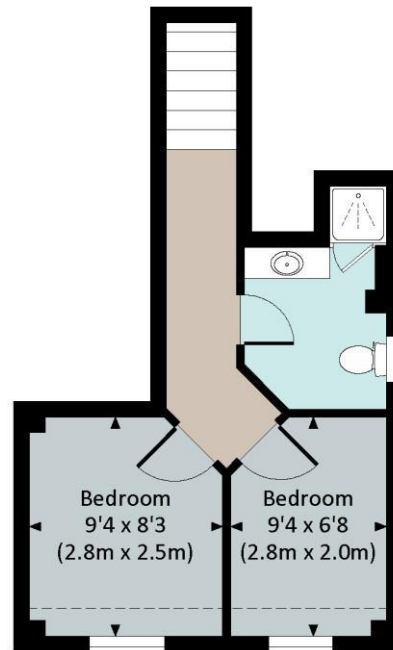
EMPERORS GATE, SW7

Approx. gross internal area 772 Sq Ft. / 71.7 Sq M.

Approx. gross internal area 801 Sq Ft. / 74.4 Sq M. Inc. Restricted Height



FOURTH FLOOR



UPPER FOURTH FLOOR



All measurements are approximate and for illustration purposes only as defined by the NICS Code of Measuring Practice © 2014
Dowling Jones Design www.dowlingjones.com 020 7610 9933

Energy Efficiency Rating		
	Current	Potential
Very energy efficient - lower running costs		
(92+) A		
(81-91) B		
(69-80) C		
(55-68) D	67	71
(39-54) E		
(21-38) F		
(1-20) G		
Not energy efficient - higher running costs		
England, Scotland & Wales	EU Directive 2002/91/EC	

This floorplan is for illustration purposes only and is not to scale. The position and size of doors, windows, appliances and other features are approximate.

*Please note, the rent cannot be paid on a weekly basis

Winkworth

South Kensington Lettings | 020 7370 6767 | lettings.southken@winkworth.co.uk

winkworth.co.uk

for every step...

Winkworth wishes to inform prospective buyers and tenants that these particulars are a guide and act as information only. All our details are given in good faith and believed to be correct at the time of printing but they don't form part of an offer or contract. No Winkworth employee has authority to make or give any representation or warranty in relation to this property. All fixtures and fittings, whether fitted or not are deemed removable by the vendor unless stated otherwise and room sizes are measured between internal wall surfaces, including furnishings.