



KENTON PARK CRESCENT, HARROW, HA3  
**£840,000 FREEHOLD**

## GENEROUS FIVE-BEDROOM SEMI-DETACHED RESIDENCE IN A LOVELY LOCATION

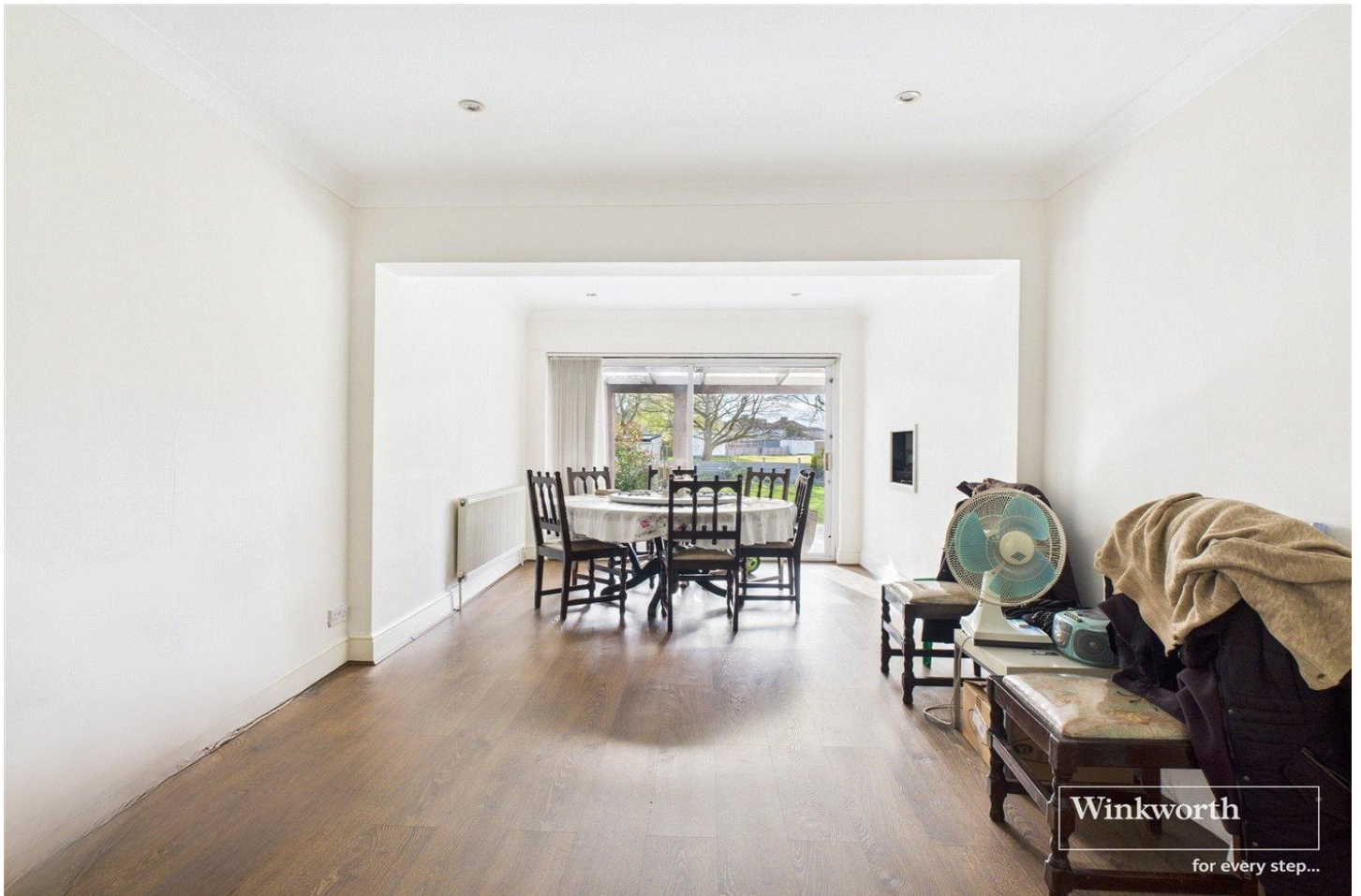
Kingsbury | 020 8204 0000 | [kingsbury@winkworth.co.uk](mailto:kingsbury@winkworth.co.uk)

**Winkworth**

for every step...

[winkworth.co.uk](http://winkworth.co.uk)





A substantial semi-detached residence, located in the acclaimed Kenton Park Crescent. The ground floor features a modern kitchen, utility rooms, a spacious living room, and a formal dining room, ideal for both everyday living and entertaining. A versatile bedroom or office space, along with two convenient W/Cs, adds to the floor's flexibility. Upstairs, you'll find five bedrooms, an office, and two well-appointed bathrooms. The property further benefits from an extended loft room, providing additional living or storage space. Externally, the home boasts a large rear garage, an extensive garden, and a practical storage outbuilding. To the front, there is off-street parking, ensuring ample space for multiple vehicles. This residence is a true gem offering a canvas for forever home customisation.



**Winkworth**

for every step...

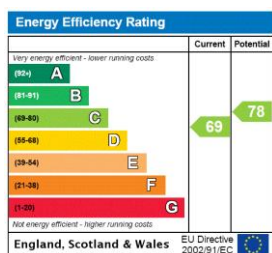




**Winkworth**  
for every step...



This floorplan is for illustration purposes only and is not to scale. The position and size of doors, windows, appliances and other features are approximate.



**Tenure:** Freehold

**Council Tax Band:** F - Harrow

Where no figures are shown, we have been unable to ascertain the information. All figures that are shown were correct at the time of printing.

Kingsbury | 020 8204 0000 | kingsbury@winkworth.co.uk

**Winkworth**

for every step...

winkworth.co.uk

Winkworth wishes to inform prospective buyers and tenants that these particulars are a guide and act as information only. All our details are given in good faith and believed to be correct at the time of printing but they don't form part of an offer or contract. No Winkworth employee has authority to make or give any representation or warranty in relation to this property. All fixtures and fittings, whether fitted or not are deemed removable by the vendor unless stated otherwise and room sizes are measured between internal wall surfaces, including furnishings.