



Electric Avenue, Westcliff on Sea

£485,000 *Freehold*

4  1  1 

Located in a sought-after neighbourhood, this lovely period end of terrace house offers a perfect blend of charm and modern convenience. Boasting 4 bedrooms, this property is ideal for families looking for a comfortable and spacious home.

KEY FEATURES

- End of Terrace Family Home
- Four Bedrooms
- Spacious Lounge/Diner
- Parking for 2/3 cars
- Ground Floor WC
- Good Size Rear Garden



Leigh On Sea

01702 470625 | leighonsea@winkworth.co.uk

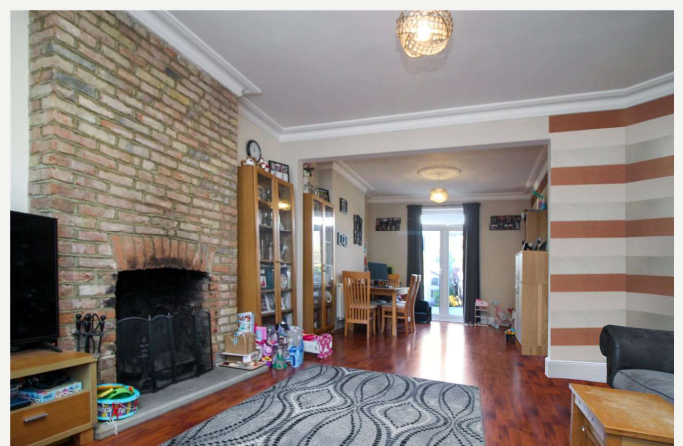
Winkworth

for every step...



The house is bright and inviting, with ample natural light flowing through the large windows. The spacious east backing garden and decked patio provide great outdoor space for entertaining or simply relaxing. Off-street parking adds to the convenience of this property.

Within close proximity to local amenities, schools, and transport links, this property offers both convenience and tranquillity. Don't miss the opportunity to make this lovely house your new home. Contact us today to arrange a viewing and experience the beauty and comfort this property has to offer.





ROOM DESCRIPTIONS

Accommodation: -

Entrance Hall: - Stairs to first floor.

Lounge/Diner: - 28'4 in to bay x 13'10 max. (8.64m x 4.22) A lovely bright room with a large bay window to front with French style doors to rear. Open functional feature fire place. High ceilings with coving and wooden flooring.

Kitchen: - 22'2 x 9'1. (6.75m x 2.76m). French doors to side and window to rear. Fitted kitchen with a working surface and basin units below and above. Sink unit and integrated dishwasher. Space for further appliances.

WC: - Obscure window to side. Low level wc and wash hand basin.

First Floor Landing: - Stairs to second floor and doors to all rooms.

Bedroom: - 16'1 into bay x 12'4. (4.90m x 3.76m) Bay window to front. Feature fire place and radiator. Picture rail and coving to ceiling.

Bedroom: - 12'4 x 12. (3.76m x 3.66m) Window to rear. Radiator. Picture rail and coving to ceiling.

Bedroom: - 8 x 7'11. (2.44 x 2.41m) Oriel bay window to front. Radiator and coving.

Bathroom/Wet Room: - 8 x 7'11. (2.44 x 2.41) Window to rear. A lovely modern suite a corner spa bath, low level wc and a floating vanity unit with wash hand basin. Separate shower. Tiling to walls and floor.

Second Floor: -

Bedroom: - 12'8 x 11'1. (3.86m x 3.38m) Velux windows to rear. Eve storage.

Exterior: -

Rear Garden- A Lovely East backing garden commencing with a large decked area with steps leading to lawn area with shrubs and a patio area at the rear with a good size with lighting and power which can be used as a workshop/home gym/storage.

Front: -A good size block paved drive with parking for 2/3 cars. Side access to rear.

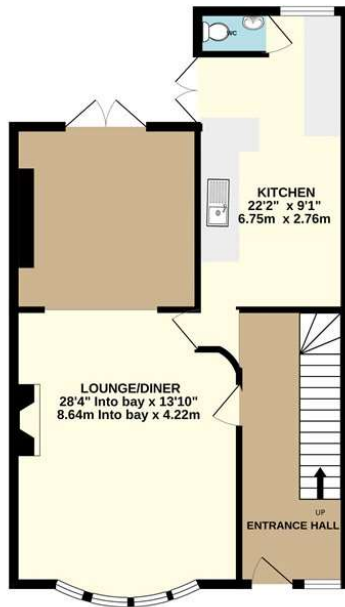
MATERIAL INFO

Tenure: Freehold

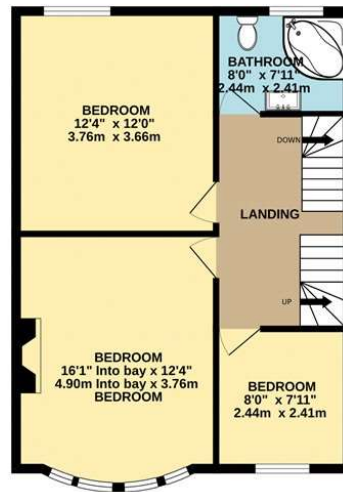
Council Tax Band: C

EPC rating: D

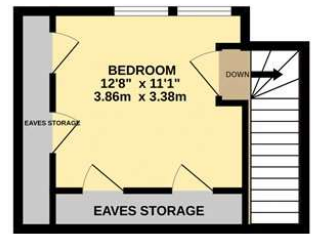
GROUND FLOOR
627 sq.ft. (58.3 sq.m.) approx.



1ST FLOOR
569 sq.ft. (52.9 sq.m.) approx.



2ND FLOOR
226 sq.ft. (21.0 sq.m.) approx.

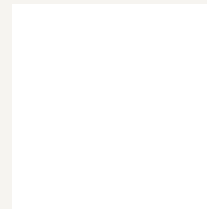


TOTAL FLOOR AREA: 1423 sq.ft. (132.2 sq.m.) approx.

Whilst every attempt has been made to ensure the accuracy of the floorplan contained here, measurements of doors, windows, rooms and any other items are approximate and no responsibility is taken for any error, omission or mis-statement. This plan is for illustrative purposes only and should be used as such by any prospective purchaser. The services, systems and appliances shown have not been tested and no guarantee as to their operability or efficiency can be given.
Made with Metropix ©2025

For more information, scan the QR code or visit the link below

Score	Energy rating	Current	Potential
92+	A		
81-91	B		
69-80	C		76 C
55-68	D	56 D	
39-54	E		
21-38	F		
1-20	G		



<https://www.winkworth.co.uk/sale/property/LOS250197>

Where no figures are shown, we have been unable to ascertain the information. All figures that are shown were correct at the time of printing.

Leigh On Sea

01702 470625 | leighonsea@winkworth.co.uk

Winkworth

for every step...

Winkworth wishes to inform prospective buyers and tenants that these particulars are a guide and act as information only. All our details are given in good faith and believed to be correct at the time of printing but they don't form part of an offer or contract. No Winkworth employee has authority to make or give any representation or warranty in relation to this property. All fixtures and fittings, whether fitted or not are deemed removable by the vendor unless stated otherwise and room sizes are measured between internal wall surfaces, including furnishings.