



Meriden Court, Chelsea, London, SW3

£475,000 *Share of Freehold*



A contemporary one bedroom apartment on the third floor of a sought after purpose built block between the King's Road and St Luke's Gardens.

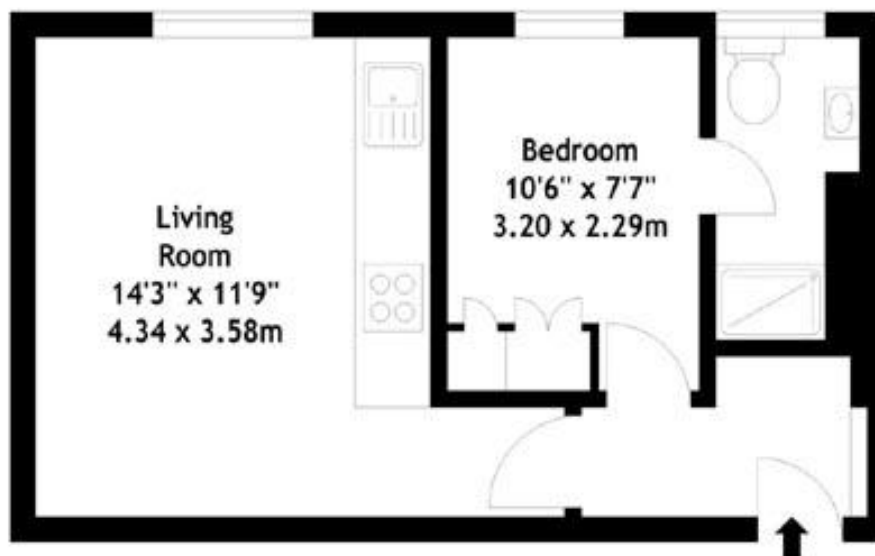
KEY FEATURES

- Share of Freehold
- Prime Location
- Porter
- Passenger Lift



Knightsbridge & Chelsea

0207 589 6616 | knightsbridge@winkworth.co.uk



Third Floor

Meriden Court, SW3
Gross Internal Area 350 sq ft - 32.52 sq m

MATERIAL INFO

Tenure: Share of Freehold
Term: 994 year and 10 months
Service Charge: £6244 per annum
Ground Rent: £ 0 Annually (subject to increase)
Council Tax Band: D
EPC rating: E

For more information, scan the QR code or visit the link below



<https://www.winkworth.co.uk/sale/property/KBR130333>

Where no figures are shown, we have been unable to ascertain the information. All figures that are shown were correct at the time of printing.

Knightsbridge & Chelsea

0207 589 6616 | knightsbridge@winkworth.co.uk

Winkworth wishes to inform prospective buyers and tenants that these particulars are a guide and act as information only. All our details are given in good faith and believed to be correct at the time of printing but they don't form part of an offer or contract. No Winkworth employee has authority to make or give any representation or warranty in relation to this property. All fixtures and fittings, whether fitted or not are deemed removable by the vendor unless stated otherwise and room sizes are measured between internal wall surfaces, including furnishings.