



MERIDEN COURT, CHELSEA, LONDON, SW3 £600,000 SHARE OF FREEHOLD

DESCRIPTION:

A modern one-bedroom apartment located on the third floor of a desirable purpose-built block situated between the King's Road and St Luke's Gardens.

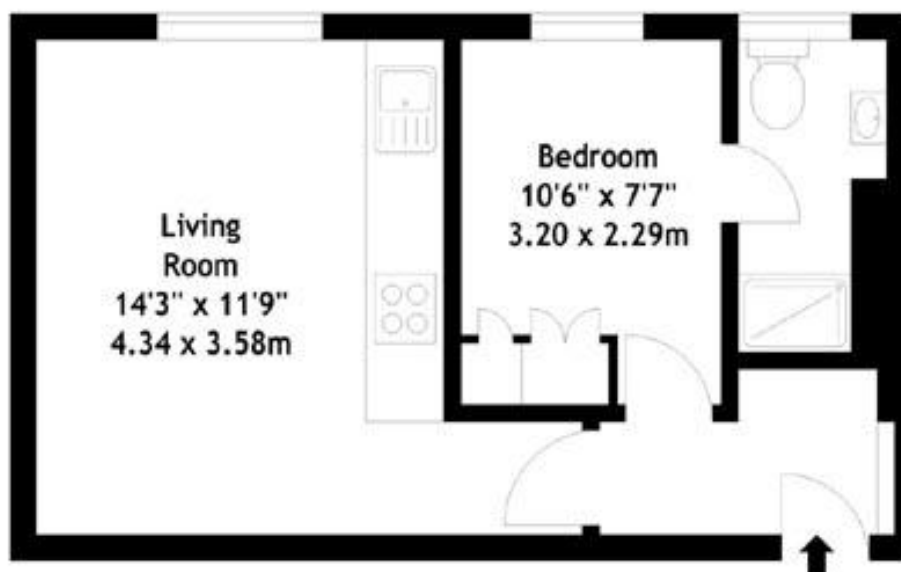
The property is well-maintained and features a bright open-plan kitchen/reception room, a bedroom with fitted wardrobe, and an en-suite shower room. The building offers amenities such as a lift, porter, and communal heating and hot water.

Knightsbridge & Chelsea | 0207 589 6616 | knightsbridge@winkworth.co.uk

Winkworth

for every step...

winkworth.co.uk



Third Floor

Meriden Court, SW3
Gross Internal Area 350 sq ft - 32.52 sq m

This floorplan is for illustration purposes only and is not to scale. The position and size of doors, windows, appliances and other features are approximate.

For more details visit: Hi Richard,

Energy Efficiency Rating	
Current	Potential
Very energy efficient - lower running costs	
A (92-100)	
B (81-91)	
C (69-80)	
D (55-68)	
E (39-54)	
F (21-38)	
G (1-20)	
	71
	52
Not energy efficient - higher running costs	
England, Scotland & Wales EU Directive 2002/91/EC	



Tenure: Share of Freehold
Term: Expires - 31/12/3020
Lease length: 995 Year – 5 months
Service Charge: £6,244 per annum
Ground Rent: Peppercorn
Council Tax Band: D

Where no figures are shown, we have been unable to ascertain the

Knightsbridge & Chelsea | 0207 589 6616 | knightsbridge@winkworth.co.uk

Winkworth

for every step...

winkworth.co.uk

Winkworth wishes to inform prospective buyers and tenants that these particulars are a guide and act as information only. All our details are given in good faith and believed to be correct at the time of printing but they don't form part of an offer or contract. No Winkworth employee has authority to make or give any representation or warranty in relation to this property. All fixtures and fittings, whether fitted or not are deemed removable by the vendor unless stated otherwise and room sizes are measured between internal wall surfaces, including furnishings.