



CAWTHORN APARTMENTS, LONDON, SW6
£625,000 LEASEHOLD

A beautifully presented one bedroom, one bathroom, first floor apartment in a prime Fulham High Street location, offering modern living with a concierge service and secure entry, plus an allocated underground parking space.

Fulham & Parsons Green | 020 7731 3388 | fulham@winkworth.co.uk



for every step...



DESCRIPTION:

This spacious apartment boasts a bright, open-plan living area with a high-spec Siemens kitchen, featuring a multifunction oven, microwave combination oven, and induction hob. Off the hallway, you'll find the generous double bedroom and a large bathroom. Ample built-in storage enhances the practicality of the space. There is also air conditioning throughout.

Ideally positioned, the apartment is just moments from the scenic Thames riverside walk and the green open spaces of Bishop's Park. A short stroll over Putney Bridge leads to the vibrant Putney High Street, offering an array of restaurants, shops, and amenities. Fulham Road and Parsons Green are also within easy reach. Excellent transport links include Putney Bridge Underground Station (District Line, Zone 2), just a short walk away.

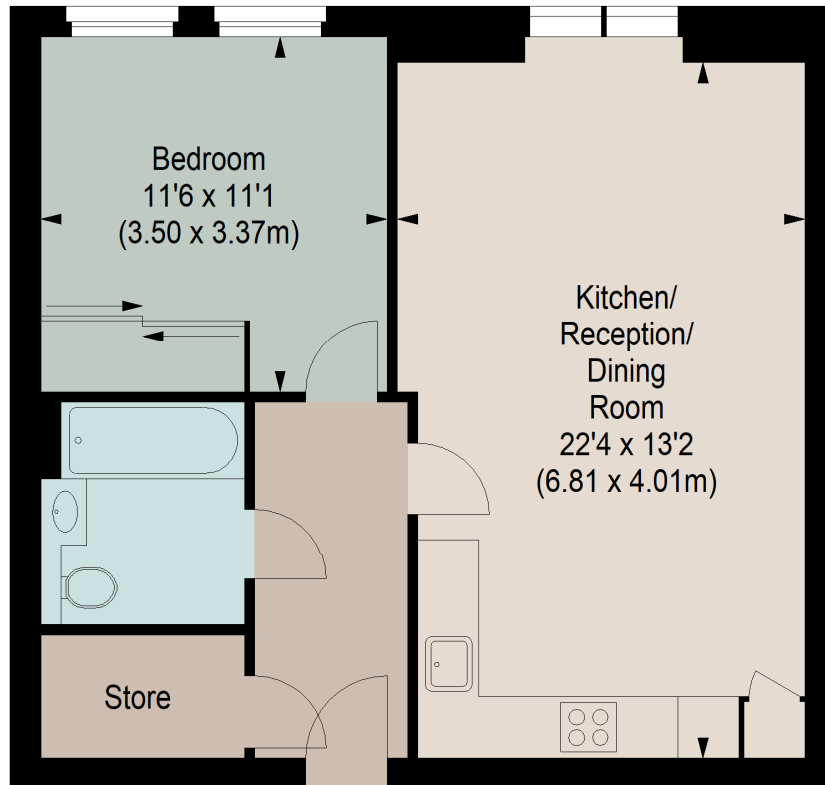
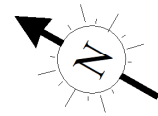




CAWTHORN APARTMENTS, SW6

Approximate gross internal area

566 sq ft / 52.58 sq m



FIRST FLOOR

Although every attempt has been made to ensure accuracy, all measurements are approximate.
This floorplan is for illustrative purposes only and not to scale.
Measured in accordance with RICS standards.

This floorplan is for illustration purposes only and is not to scale. The position and size of doors, windows, appliances and other features are approximate.

Score	Energy rating	Current	Potential
92+	A		
81-91	B	83 B	83 B
69-80	C		
55-68	D		
39-54	E		
21-38	F		
1-20	G		

Tenure: Leasehold

Term: 991 year and 11 months

Service Charge: £4672 per annum

Ground Rent: £ 350 Annually (subject to increase)

Council Tax Band: E

Where no figures are shown, we have been unable to ascertain the information. All figures that are shown were correct at the time of printing.

Fulham & Parsons Green | 020 7731 3388 | fulham@winkworth.co.uk

Winkworth

for every step...

winkworth.co.uk

Winkworth wishes to inform prospective buyers and tenants that these particulars are a guide and act as information only. All our details are given in good faith and believed to be correct at the time of printing but they don't form part of an offer or contract. No Winkworth employee has authority to make or give any representation or warranty in relation to this property. All fixtures and fittings, whether fitted or not are deemed removable by the vendor unless stated otherwise and room sizes are measured between internal wall surfaces, including furnishings.