



HARLESDEN GARDENS, LONDON, NW10  
**£350,000 SHARE OF FREEHOLD**

**A SPACIOUS AND MODERN TWO DOUBLE BEDROOM, TOP FLOOR FLAT IN A PERIOD CONVERSION, LOCATED A SHORT WALK FROM AMENITIES AND TRANSPORT LINKS.**

**Kensal Rise & Queens Park | 0208 960 4947 | kensalrise@winkworth.co.uk**

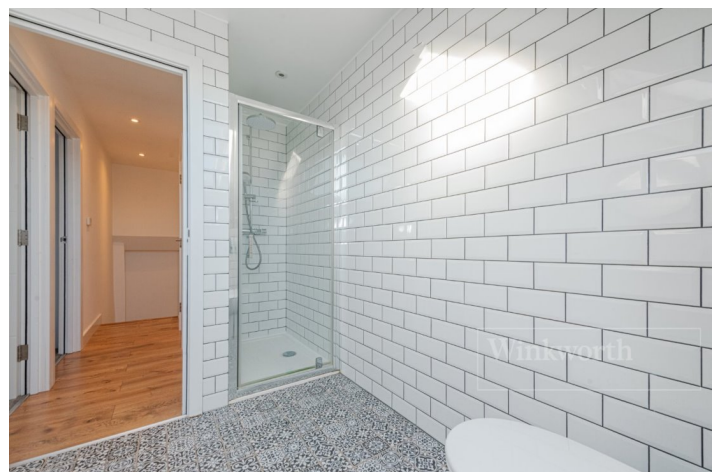




## LOCATION:

Ideally located on the most sought after roads in Harlesden, the property is a short walk from major transport links. The nearest train station is Willesden Junction (Zone 2 & Overground) - c. 20 minutes to central London and the No.18 Bus on Harrow Road to Euston.

The flat is also a stone's throw from Roundwood Park and the array amenities that Willesden Junction and Harlesden has to offer.



**Winkworth**



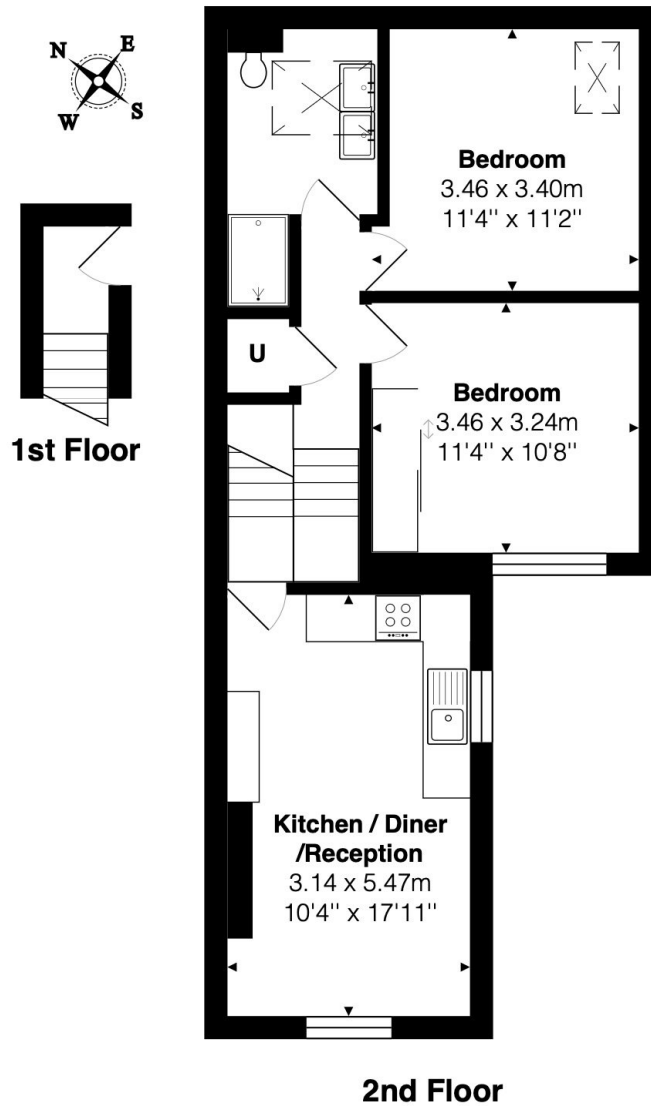
## DESCRIPTION:

This property is offered in excellent condition, having recently undergone renovation works. As it is split level, on entry the internal staircase leads up to a bright and airy open plan kitchen and reception area. The kitchen is a modern, handleless kitchen with integrated appliances.

The bedrooms are both equal sized double bedrooms, with the shower room being a fully tiled three piece suite with modern fittings.

Additional benefits include Share of Freehold and no upper chain.

**Winkworth**



Total Area: 56.2 m<sup>2</sup> ... 605 ft<sup>2</sup>

All measurements are approximate and for display purposes only

This floorplan is for illustration purposes only and is not to scale. The position and size of doors, windows, appliances and other features are approximate.

Kensal Rise & Queens Park | 0208 960 4947 | kensalrise@winkworth.co.uk

**Winkworth**

[winkworth.co.uk](http://winkworth.co.uk)

See things differently

winkworth wishes to inform prospective buyers and tenants that these particulars are a guide and act as information only. All our details are given in good faith and believed to be correct at the time of printing but they don't form part of an offer or contract. No winkworth employee has authority to make or give any representation or warranty in relation to this property. All fixtures and fittings, whether fitted or not are deemed removable by the vendor unless stated otherwise and room sizes are measured between internal wall surfaces, including furnishings.