



WESLEY GATE, READING, BERKSHIRE, RG1 4AP  
£1,200 PER MONTH FURNISHED

MODERN ONE BEDROOM APARTMENT IN  
READING TOWN CENTRE. AVAILABLE NOW.

Reading | 0118 4022 300 | [reading@winkworth.co.uk](mailto:reading@winkworth.co.uk)

**Winkworth**

for every step...

[winkworth.co.uk](http://winkworth.co.uk)





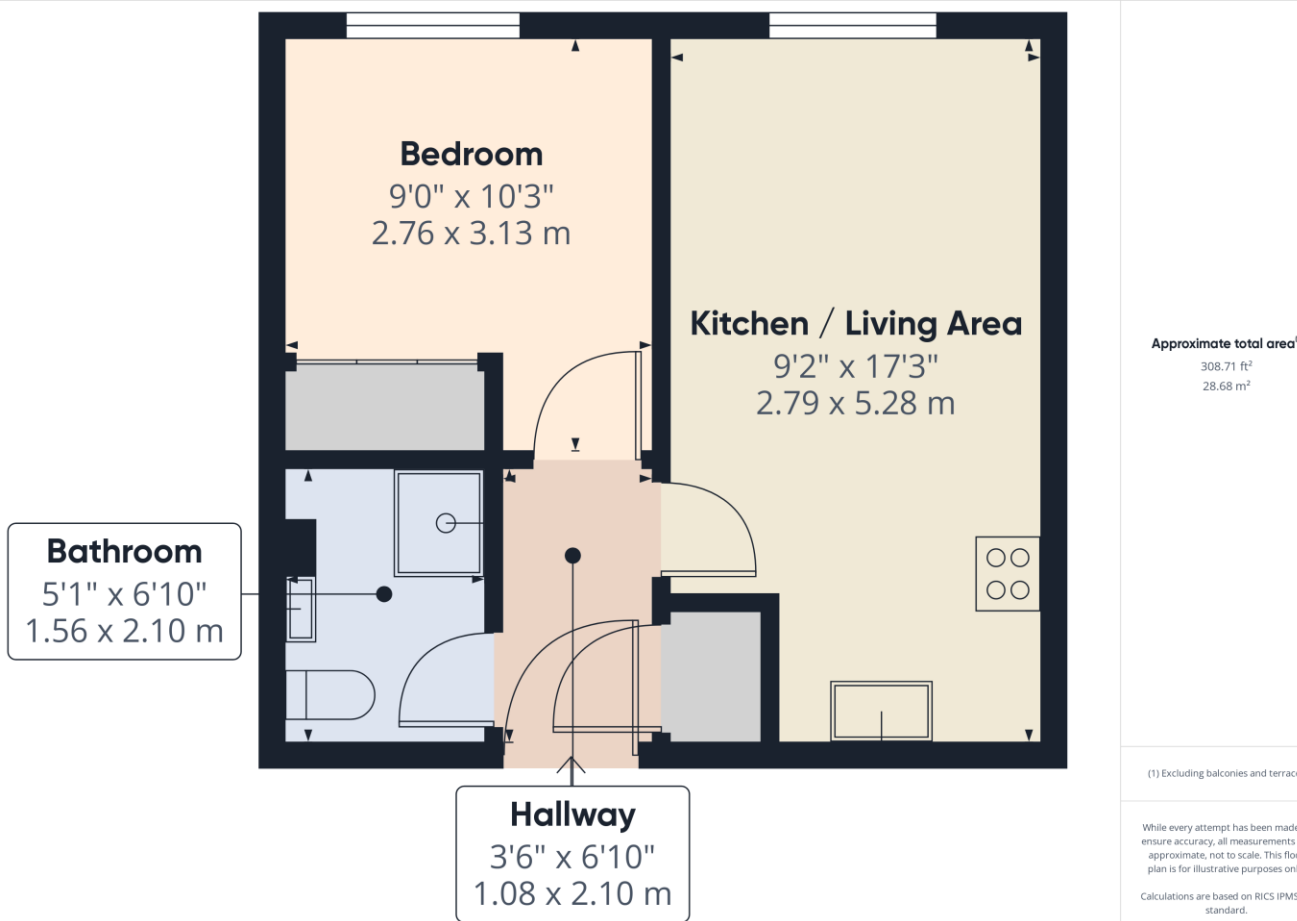
## DESCRIPTION:

Modern first floor one bedroom apartment located within walking distance of Reading Train Station and Royal Berkshire Hospital. Accommodation comprises living/dining area being open plan to a modern kitchen, one double bedroom with built in wardrobes and a shower room. Further benefits include an off road allocated parking space as well as two EV charge points for the development. Available now. Furnished.

## AT A GLANCE

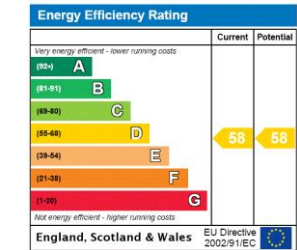
- One bedroom apartment
- Town centre location
- First floor
- Allocated off road parking space
- Available now
- Furnished





This floorplan is for illustration purposes only and is not to scale. The position and size of doors, windows, appliances and other features are approximate.

**Deposit:** £1,384.62  
**Holding Deposit:** £276.92  
**Council Tax Band:**  
Where no figures are shown, we have been unable to ascertain the information. All figures that are shown were correct at the time of printing.



Reading | 0118 4022 300 | [reading@winkworth.co.uk](mailto:reading@winkworth.co.uk)

**Winkworth**  
for every step...

[winkworth.co.uk](http://winkworth.co.uk)

Winkworth wishes to inform prospective buyers and tenants that these particulars are a guide and act as information only. All our details are given in good faith and believed to be correct at the time of printing but they don't form part of an offer or contract. No Winkworth employee has authority to make or give any representation or warranty in relation to this property. All fixtures and fittings, whether fitted or not are deemed removable by the vendor unless stated otherwise and room sizes are measured between internal wall surfaces, including furnishings.