



COLLEGE COURT, QUEEN CAROLINE STREET, LONDON, W6 £2,250 PER MONTH

A beautifully renovated two double bedroom flat situated on Queen Caroline Street, just moments from Hammersmith Broadway.

Fulham & Parsons Green | 020 7731 3388 | fulham@winkworth.co.uk

Tenant Fees Apply: Details of fees for tenant referencing, tenancy agreement admin fees and renewal fees are available on the Winkworth website and the link can be found with the displayed rent for the property. Tenants should ensure they are fully conversant with these upfront fees and other costs that are involved at the outset of the tenancy before making an offer to rent and your local Winkworth office will provide written details upon request.

winkworth.co.uk

Winkworth

for every step...



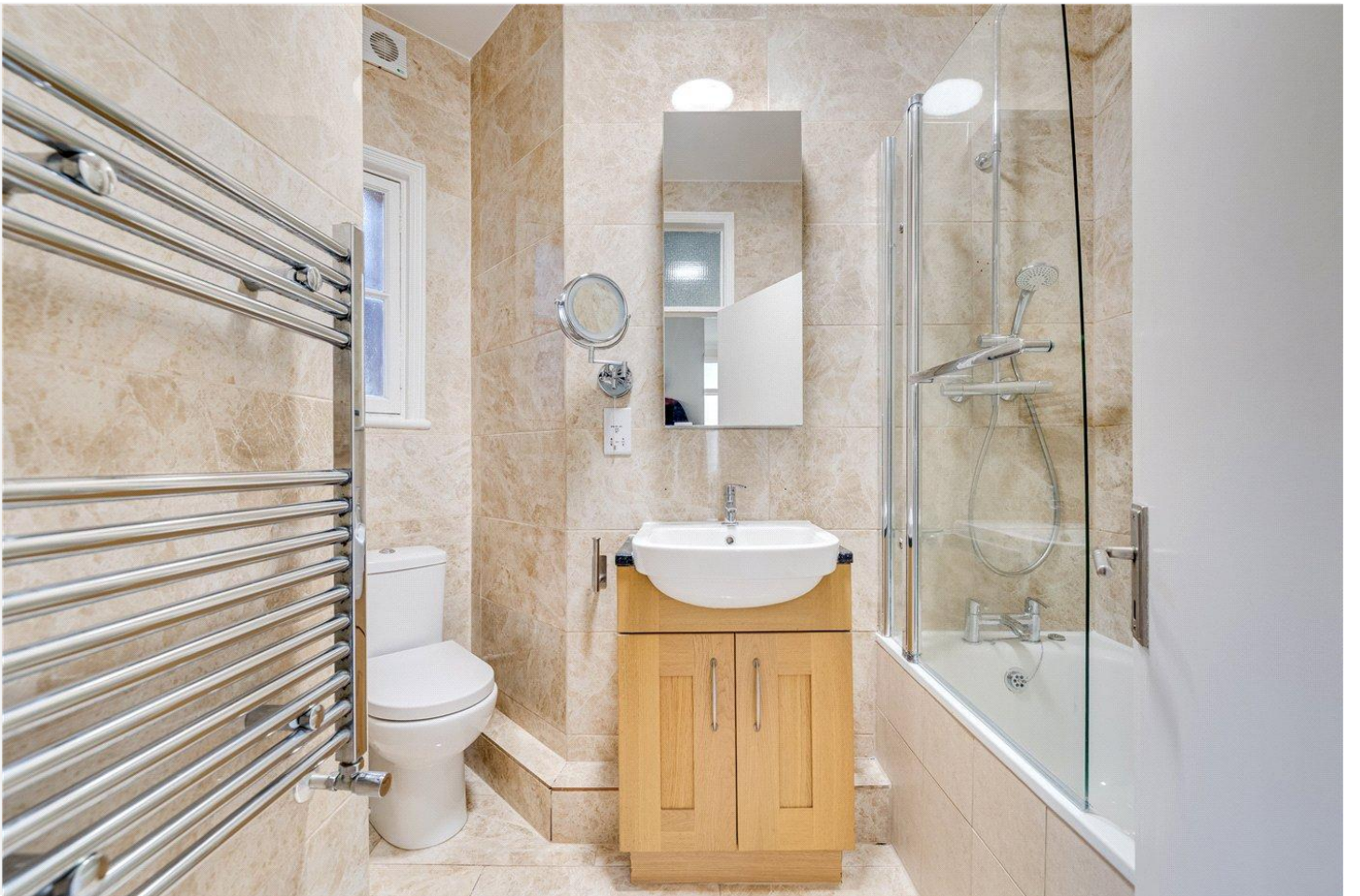
Upon entry, you're welcomed by a spacious hallway with elegant wooden flooring, leading to a generous reception room and a separate eat-in kitchen, which opens onto a private balcony.

Both bedrooms are well-proportioned doubles, each offering ample built-in storage, and are served by a sleek, modern bathroom.

Ideally positioned for excellent transport links, the property is a short walk from Hammersmith tube station, which provides access to the Piccadilly, Hammersmith & City, and District lines, as well as numerous bus routes into central London.

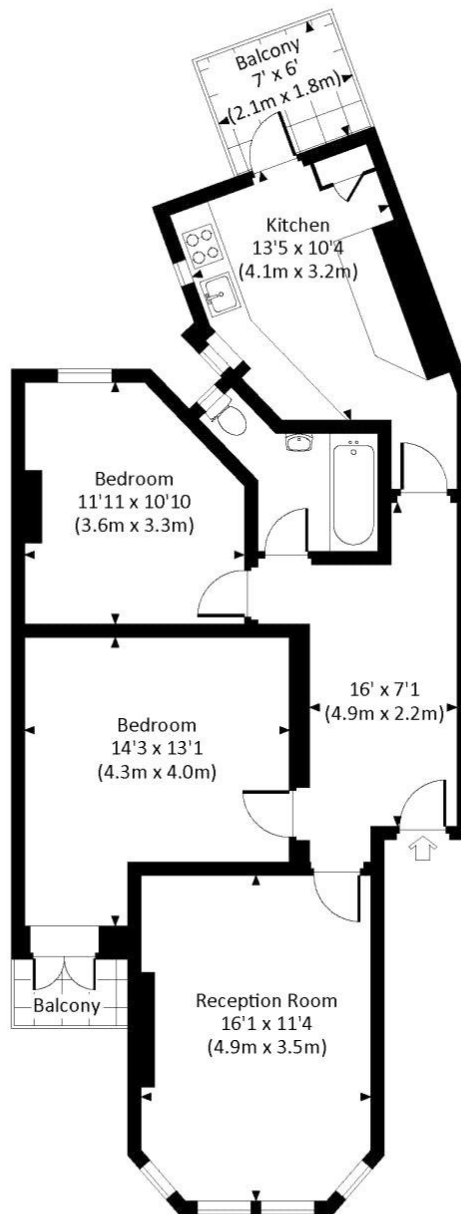
Residents will also enjoy the abundance of local amenities along King Street and at Hammersmith Broadway, with the charming Brook Green just a short stroll away.





COLLEGE COURT, W6

Approx. gross internal area
804 Sq Ft. / 74.7 Sq M.



SECOND FLOOR



All measurements are approximate and for illustration purposes only as defined by the RICS Code of Measuring Practice © 2014
Dowling Jones Design www.dowlingjones.com 020 7610 9933

This floorplan is for illustration purposes only and is not to scale. The position and size of doors, windows, appliances and other features are approximate.

Fulham & Parsons Green | 020 7731 3388 | fulham@winkworth.co.uk

Winkworth

for every step...

winkworth.co.uk

Winkworth wishes to inform prospective buyers and tenants that these particulars are a guide and act as information only. All our details are given in good faith and believed to be correct at the time of printing but they don't form part of an offer or contract. No Winkworth employee has authority to make or give any representation or warranty in relation to this property. All fixtures and fittings, whether fitted or not are deemed removable by the vendor unless stated otherwise and room sizes are measured between internal wall surfaces, including furnishings.