



DULWICH WOOD AVENUE, SE19
£6,500 PER MONTH FURNISHED, PART FURNISHED

SUBSTANTIAL DETACHED FAMILY HOME FOR RENT ON DULWICH WOOD AVENUE

Crystal Palace | 02038693222 | crystalpalace@winkworth.co.uk

Winkworth

for every step...

winkworth.co.uk



DESCRIPTION:

Winkworth is pleased to offer this substantial, detached family house for rent on Dulwich Wood Avenue.

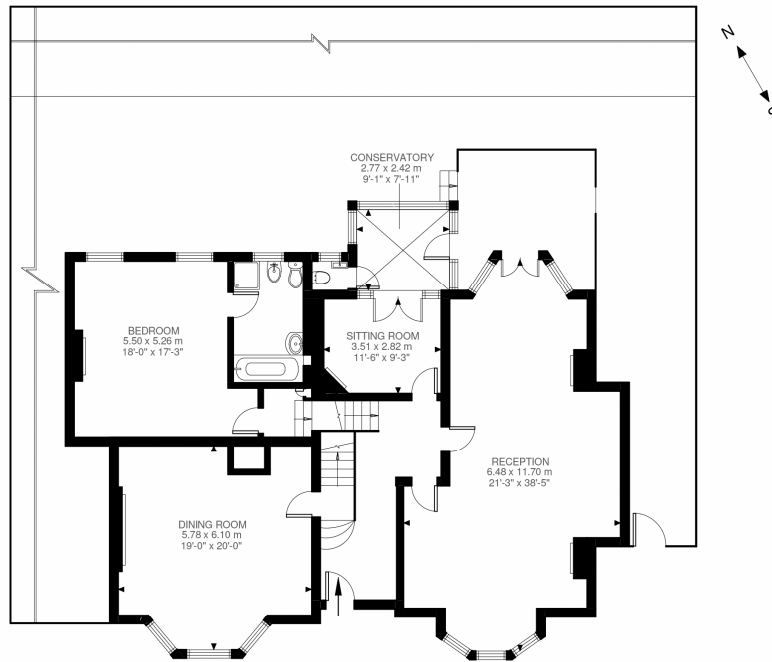
Spanning 4051 sq ft the house offers spacious and flexible living to suit your family's needs. The house is set back from the road and benefits from a driveway that can fit several cars. The house comprises entrance hallway, formal dining room with space for 12 to dine and a beautiful original fireplace and bay window, separate double reception room spanning the length of the house with bay windows, two original fireplaces and patio doors out onto the garden. Office or playroom with access to the conservatory and WC.

The separate kitchen is newly installed and finished in a contemporary shaker style, there is a utility room just off of the kitchen as well as a gym with en-suite shower room. The garden spans over 60ft and has a raised patio and grassed areas. There is a mezzanine level with larger than average double bedroom and full en-suite bathroom. On the first floor you will find six double bedrooms, one is currently being used as an additional living room and another a home office. There are two bathrooms on this level, one being en-suite.

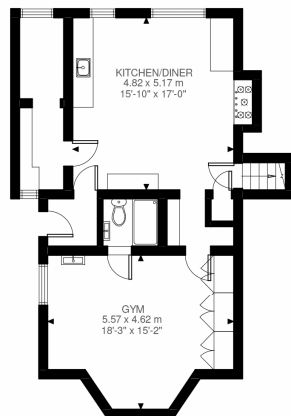
The house retains many period features including high ceilings and original fireplaces.



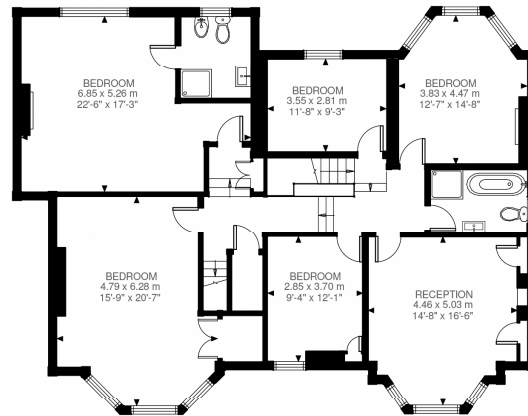




Ground Floor
1795 ft²



Lower Ground Floor
738 ft²

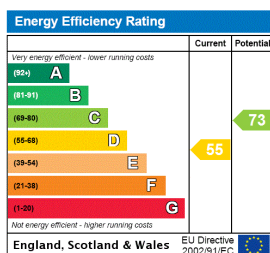


First Floor
1649 ft²

Dulwich Wood Avenue, SE19
Approximate Gross Internal Area
388.56 SQ.M / 4182 SQ.FT

Illustration for identification purposes only. Not to scale.
Floor Plan Drawn According To RICS Guidelines.

This floorplan is for illustration purposes only and is not to scale. The position and size of doors, windows, appliances and other features are approximate.



Deposit: £0.00

Holding Deposit:

Council Tax Band: G

Where no figures are shown, we have been unable to ascertain the information. All figures that are shown were correct at the time of printing.

Winkworth

for every step...

Crystal Palace | 02038693222 | crystalpalace@winkworth.co.uk

winkworth.co.uk

Winkworth wishes to inform prospective buyers and tenants that these particulars are a guide and act as information only. All our details are given in good faith and believed to be correct at the time of printing but they don't form part of an offer or contract. No Winkworth employee has authority to make or give any representation or warranty in relation to this property. All fixtures and fittings, whether fitted or not are deemed removable by the vendor unless stated otherwise and room sizes are measured between internal wall surfaces, including furnishings.