



CHIVERS STREET, SOMERSET, BA2
£499,999 FREEHOLD





CHIVERS STREET, SOMERSET, BA2

3 bedroom | hsbw warranty | energy efficient EPC B | end of terrace | sought after location in Mulberry Park. 1,022 sqft.

A superb 3 bedroom end of terrace house in the popular Combe Down area of Bath.

The accommodation is light and spacious throughout with off street parking and an enclosed rear garden.

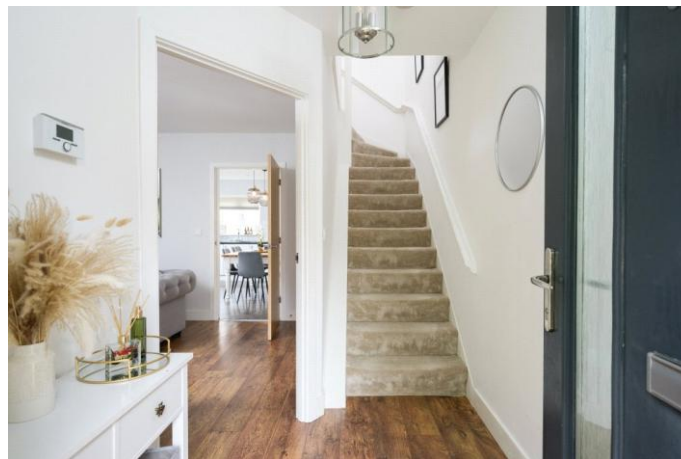
A beautifully presented, almost new 3 bedroom family home. Built in c.2017, this house sits on the very popular Mulberry Park development in Combe Down. These houses have been thoughtfully designed for modern living and to a highly-specified finish.

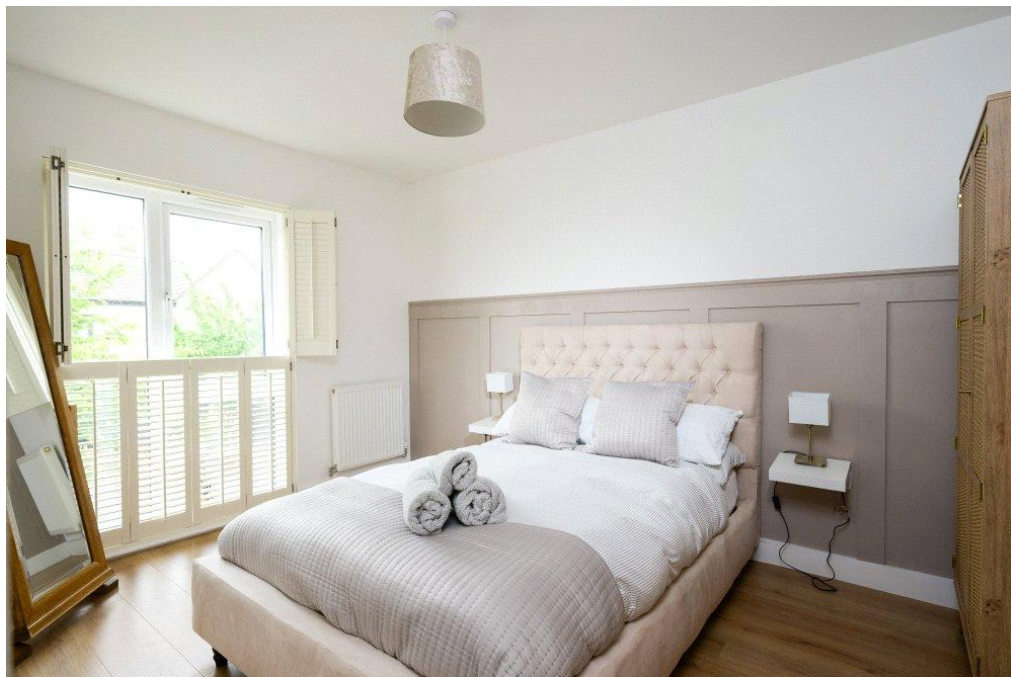
The spacious accommodation comprises, on the ground floor, a generous living room, kitchen/dining room with patio doors leading out to the rear garden, a cloakroom and utility room. Upstairs there are three bedrooms, including a master suite with en suite shower room and a further family bathroom. To the rear is an enclosed rear garden with side access.

Mulberry Park is a new development built on the site of the former Admiralty MOD base. Amenities on site include a nursery, primary school and community hub/cafe with the hub being particularly popular.

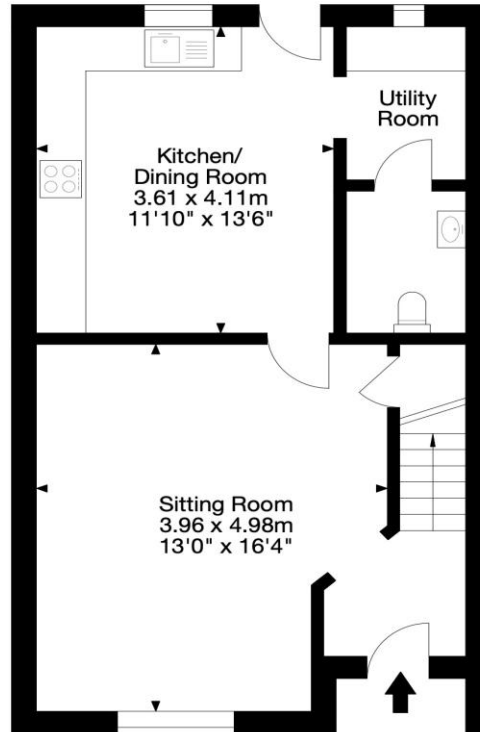
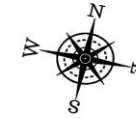
Combe Down is renowned for its friendly residents, excellent school, immediate access to lots of green spaces and great walks. Local amenities include a dentist, pharmacies, doctors surgery, car garage, award winning delicatessen, hair salon, beauty therapist, bakery, co-op mini-market.

Tenure Freehold
Council Tax D BANES Council
Broadband speed
EPC B
All mains connected.

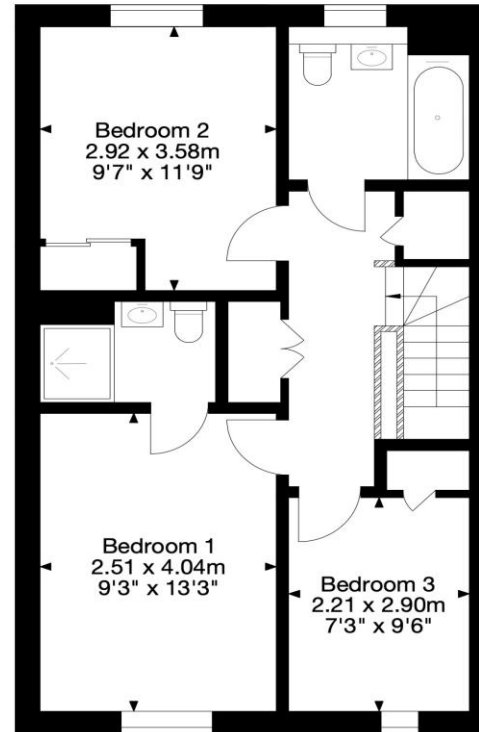




16 Chivers Street, Mulberry Park, Combe Down BA2 5BH
 Gross Internal Area (Approx.)
 Total Area = 95 sq m / 1,022 sq ft



Ground Floor



First Floor

Score	Energy rating	Current	Potential
92+	A		94 A
81-91	B	84 B	
69-80	C		
55-68	D		
39-54	E		
21-38	F		
1-20	G		

© Capture Property Marketing 2025. Drawn to RICS guidelines.
 Plan is for illustration purposes only. All features, door openings, and window locations
 All measurements and areas are approximate and should not be relied on as

Bath | 01225 829 000 | bath@winkworth.co.uk

winkworth.co.uk

Winkworth wishes to inform prospective buyers and tenants that these particulars are a guide and act as information only. All our details are given in good faith and believed to be correct at the time of printing but they don't form part of an offer or contract. No Winkworth employee has authority to make or give any representation or warranty in relation to this property. All fixtures and fittings, whether fitted or not are deemed removable by the vendor unless stated otherwise and room sizes are measured between internal wall surfaces, including furnishings.

