



LINCOLN COURT, UNITED KINGDOM, WD6  
**£395,000 FREEHOLD**

# AN UNMODERNISED TWO BEDROOM HOUSE WITH GARAGE

Borehamwood | 020 8953 8899 | borehamwood@winkworth.co.uk





### DESCRIPTION:

Located in a quiet cul de sac on the South side of Borehamwood is this two bedroom Terrace house with detached garage.

In need of modernisation, the property offers approaching 800 square feet of family accommodation which is complimented by a secluded southerly rear garden with a detached garage and parking to rear and offers scope for extension subject to the usual planning consents.

### AT A GLANCE

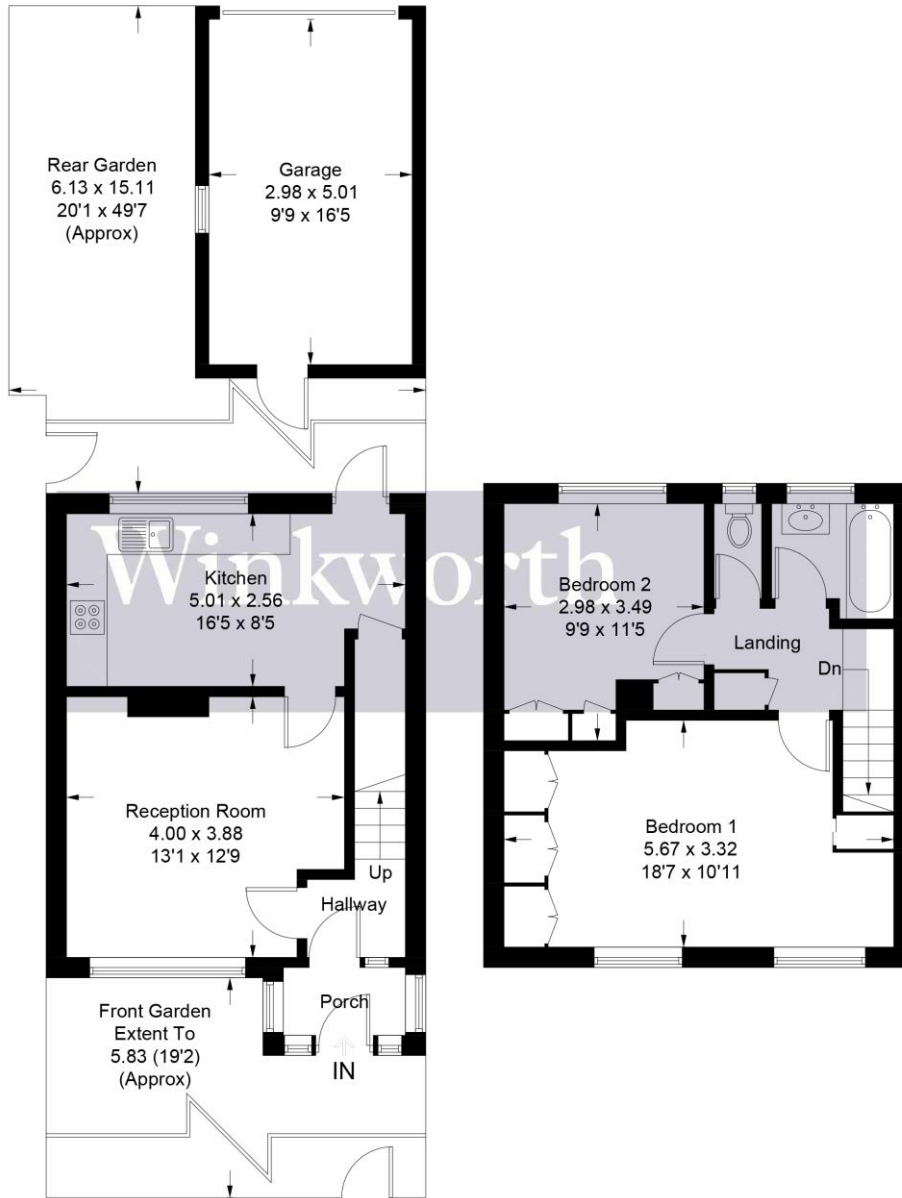
- 2 Bedrooms
- Detached Garage
- Chain Free
- Southerly Facing Garden
- 782 Square Feet
- South Borehamwood
- Quiet Cul de Sac Location
- Double Glazed
- Gas Central Heating







Approximate Gross Internal Area = 72.7 sq m / 782 sq ft  
 Garage = 15.3 sq m / 165 sq ft  
 Total = 88.0 sq m / 947 sq ft



Ground Floor

First Floor

Illustration for identification purposes only, measurements are approximate, not to scale. Winkworth © 2023 (ID980180)

This floorplan is for illustration purposes only and is not to scale. The position and size of doors, windows, appliances and other features are approximate.

