



COTEFORD STREET, LONDON, SW17
£575,000 FREEHOLD

BEAUTIFULLY PRESENTED TWO BEDROOM TERRACED COTTAGE

Tooting | 020 8767 5221 | tooting@winkworth.co.uk

Winkworth

for every step...

winkworth.co.uk



DESCRIPTION

Beautifully presented two bedroom terraced cottage, comprising a small entrance hall, large reception room at the front of the house which in turn flows into a spacious open plan kitchen/breakfast room to the rear. There are two double bedrooms on the first floor along with a large family bathroom. To the rear, the garden is mainly laid to lawn with mature shrubs and a paved terrace. The property further benefits from no chain. This property would make a fantastic first time purchase.

Coteford Street is located in a sought-after location within easy walking distance to both Tooting Bec and Broadway tube stations as well as being within walking distance of the wide open spaces of Tooting Bec Common. Tooting Broadway and all local bus routes are close by, allowing easy access in and out of the city. No chain involved

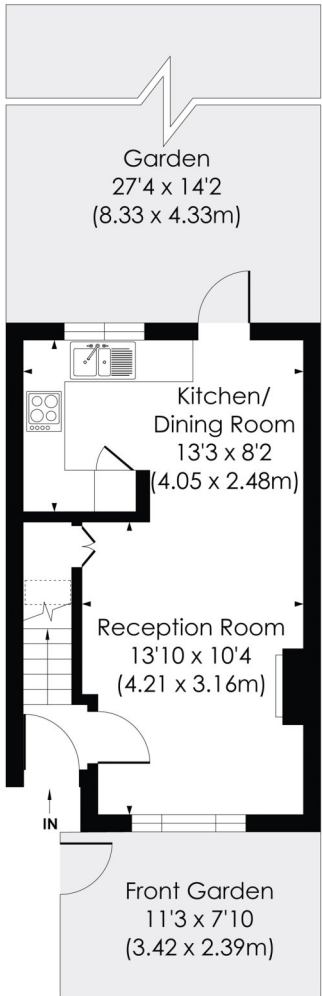
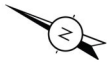




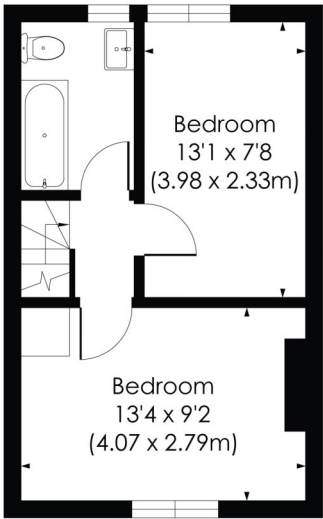
COTEFORD STREET, SW17

Approx. Gross Internal Floor Area

598 Sq. ft/55.59 Sq. m



GROUND FLOOR



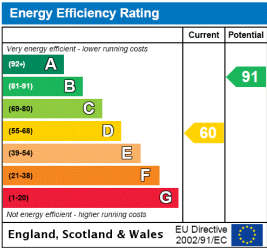
FIRST FLOOR

pixangle
PROPERTY MARKETING

© Pixangle Property Marketing Ltd. info@pixangle.com Tel: 0208 870 2118

This floor plan has been prepared for the purpose of illustration only in accordance with the latest RICS code of measuring practice and is not to scale. All measurements and areas are approximate and whilst every effort has been made to ensure the accuracy of the plan contained here, no responsibility is taken for any error, omission or misstatement.

This floorplan is for illustration purposes only and is not to scale. The position and size of doors, windows, appliances and other features are approximate.



Tooting | 020 8767 5221 | tooting@winkworth.co.uk

Winkworth

for every step...

winkworth.co.uk

Winkworth wishes to inform prospective buyers and tenants that these particulars are a guide and act as information only. All our details are given in good faith and believed to be correct at the time of printing but they don't form part of an offer or contract. No Winkworth employee has authority to make or give any representation or warranty in relation to this property. All fixtures and fittings, whether fitted or not are deemed removable by the vendor unless stated otherwise and room sizes are measured between internal wall surfaces, including furnishings.