



SOUTHFIELDS COURT, SW19
£725,000 LEASEHOLD

Winkworth



SOUTHFIELDS COURT, SW19

A beautifully presented and generously proportioned three double bedroom, three bathroom apartment located on the first floor of a secure, purpose-built development in the heart of Southfields.

Offering 1,195 sq ft of bright, lateral living space, the property features a spacious open-plan kitchen and reception area.

Set within Southfields Court on Augustus Road, the apartment benefits from gated residents' parking, access to a communal garden, and is offered with a share of the freehold.

Perfectly positioned just a short walk from Southfields Underground Station (District Line) and the vibrant amenities of Southfields Village, including cafés, shops, and restaurants.

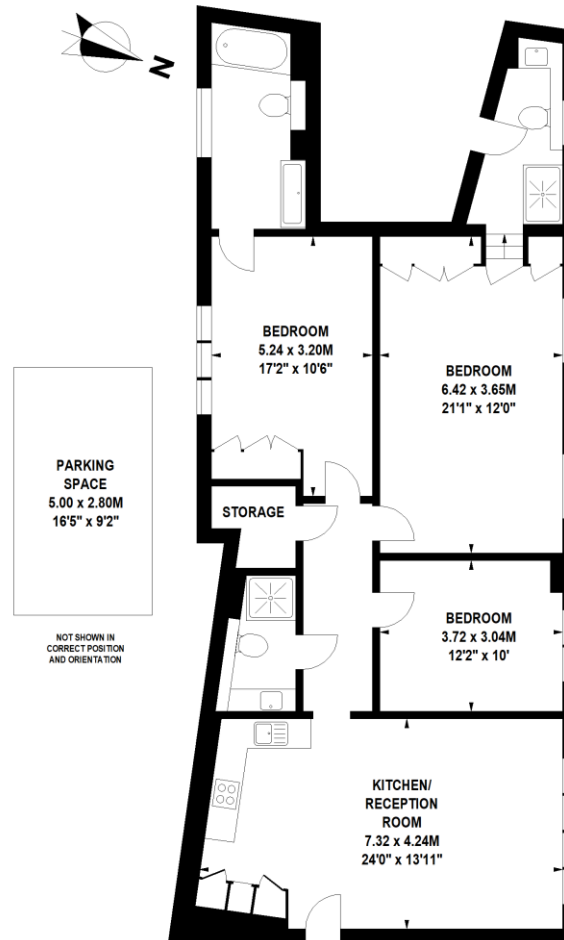
The wide open spaces of Wimbledon Park and Wimbledon Common are also within easy reach, making this an ideal home for those seeking space, convenience, and lifestyle in a well-connected location.





**Southfields Court,
Augustus Road, SW19**

Approximate Gross Internal Area 111 sq.m / 1195 sq. ft



First Floor

Floor Plan produced for WINKWORTH by Mays Floorplans © . Tel 020 3397 4594
Illustration for identification purposes only, not to scale
All measurements are maximum, and include wardrobes and window bays where applicable

Southfields | 020 8877 1000 | southfields@winkworth.co.uk

winkworth.co.uk

Winkworth wishes to inform prospective buyers and tenants that these particulars are a guide and act as information only. All our details are given in good faith and believed to be correct at the time of printing but they don't form part of an offer or contract. No Winkworth employee has authority to make or give any representation or warranty in relation to this property. All fixtures and fittings, whether fitted or not are deemed removable by the vendor unless stated otherwise and room sizes are measured between internal wall surfaces, including furnishings.

Winkworth