



EAST END ROAD, FINCHLEY, LONDON, N3
£650,000 SHARE OF FREEHOLD

**A SPACIOUS WELL-PRESENTED THREE
BEDROOM MAISONNETTE WITH PRIVATE
SECTION OF GARDEN**

Finchley | 020 8349 3388 | finchley@winkworth.co.uk



DESCRIPTION:

We are delighted to offer to the market, this well-presented three bedroom ground floor maisonette, ideally located for Regents Park Road, Ballards Lane and Temple Fortune amenities, transport links and recreational parkland, such as Stephens House & Gardens. The property has lovely features throughout including parquet flooring and comprises of spacious front reception, kitchen/dining room, three double bedrooms, family bathroom and separate wc. Further benefits include a private terraced area, own section of garden and a share of the freehold. Offered on a chain free basis, an internal viewing is highly recommended!

COUNCIL TAX: Band D

AT A GLANCE

- Set in a private development
- Ground floor maisonette
- Excellent condition
- In excess of 1100 sq.ft
- Large reception room
- Spacious kitchen/diner
- three bedrooms
- Private section of garden
- Share of freehold





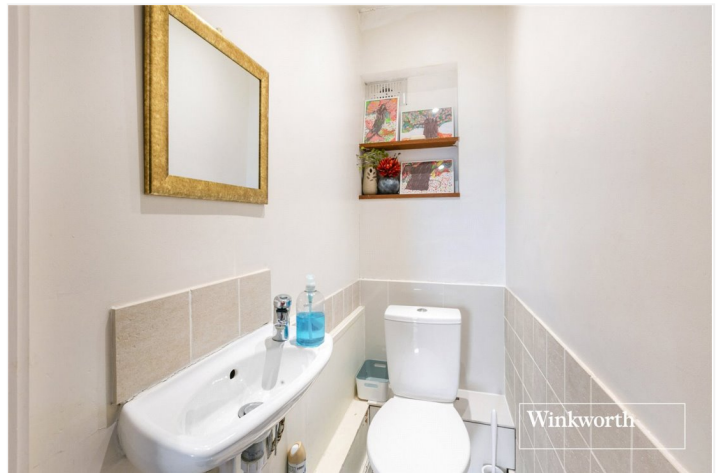
Winkworth



Winkworth



Winkworth

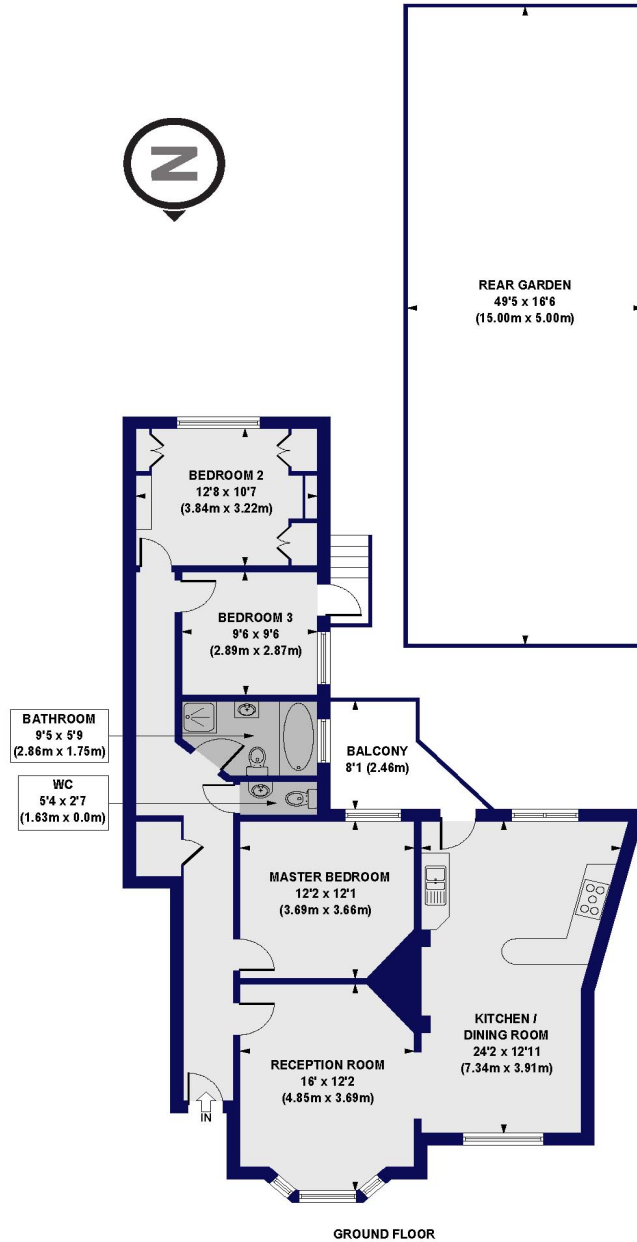


Winkworth



Winkworth

Stanhope Court, East End Road, N3
 Approx. Gross Internal Floor Area 1117 sq. ft / 103.75 sq. m



All measurements of walls, doors, windows, fittings and appliances, including their size and location, are shown as standard sizes and do not constitute any warranty or representation by the seller, their agent or CP Creative. Any intending purchaser must satisfy himself by inspection or otherwise as to the correctness of the information contained in these plans. This plan is for illustrative purposes only and should be used as such by any prospective purchasers.



Energy Efficiency Rating		Current	Potential
Very energy efficient - lower running costs			
(92-100)	A		
(81-91)	B		
(69-80)	C		77
(55-68)	D	66	
(39-54)	E		
(21-38)	F		
(1-20)	G		
Not energy efficient - higher running costs			
England, Scotland & Wales		EU Directive 2002/91/EC	