



Eliot Bank, SE23

£400,000 *Leasehold*

2  1  1 

Guide Price £400,000 - £425,000.

This charming second floor flat offers Two spacious double bedrooms, a large reception room and a private balcony. It is conveniently situated close to local amenities, schools and nearby excellent transport links



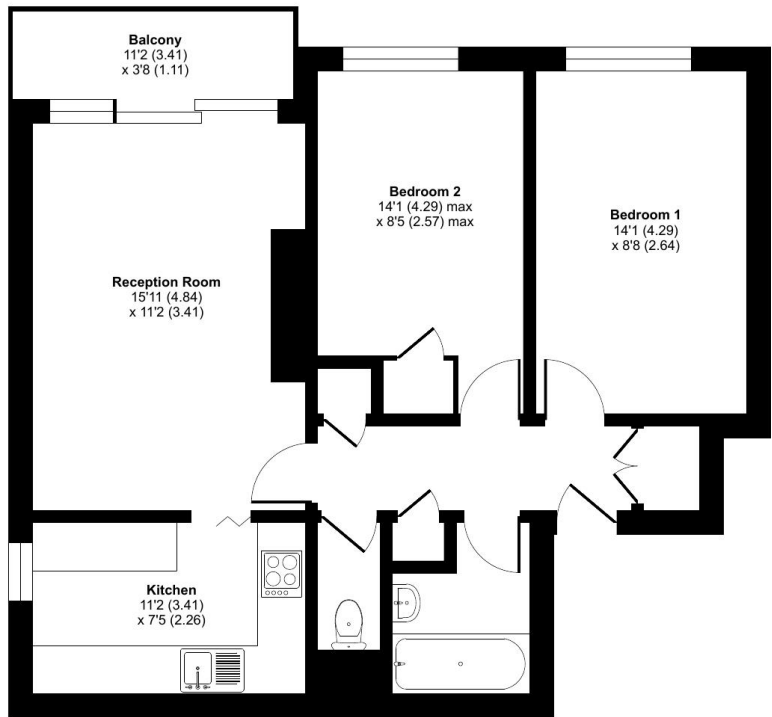
Forest Hill

| foresthill@winkworth.co.uk

Eliot Bank, London, SE23

Approximate Area = 647 sq ft / 60.1 sq m

For identification only - Not to scale



THIRD FLOOR

Floor plan produced in accordance with RICS Property Measurement Standards incorporating International Property Measurement Standards (IPMS2 Residential). © nichecom 2025. Produced for Winkworth Forest Hill and New Cross. REF: 1374660

MATERIAL INFO

Tenure: Leasehold

For more information, scan the QR code or visit the link below



<https://www.winkworth.co.uk/sale/property/FHL250312>

Where no figures are shown, we have been unable to ascertain the information. All figures that are shown were correct at the time of printing.

Forest Hill

| foresthill@winkworth.co.uk