



NORMAN ROAD, SE10
£2,600 PER MONTH FURNISHED

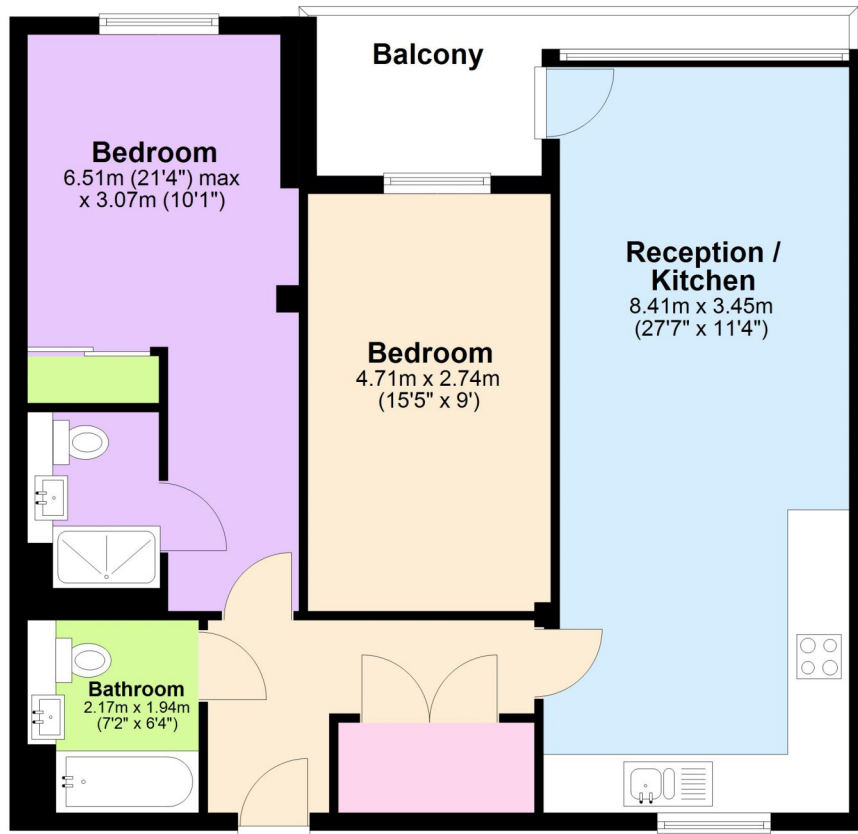
DESCRIPTION:

Stunning top-floor apartment in the modern Caledonian Point development. This spacious 807 sq.ft. flat features two large and light-filled double bedrooms with floor to ceiling windows, including a master with en-suite shower, and a separate contemporary family bathroom with skylight.

Blackheath | 0208 8520999 | blackheath@winkworth.co.uk

Eighth Floor

Approx. 75.0 sq. metres (806.9 sq. feet)



Total area: approx. 75.0 sq. metres (806.9 sq. feet)

This floorplan is for illustration purposes only and is not to scale. The position and size of doors, windows, appliances and other features are approximate.

Deposit: £3,000.00

Holding Deposit:

Council Tax Band:

Where no figures are shown, we have been unable to ascertain the information.
All figures that are shown were correct at the time of printing.