



TERRACE APARTMENTS, DRAYTON PARK, LONDON, N5
£425,000 LEASEHOLD

A BRIGHT, ONE DOUBLE BEDROOM, THIRD FLOOR APARTMENT WITH BALCONY IN HIGHBURY, N5.

Highbury | 0207 989 7000 | highbury@winkworth.co.uk

Winkworth

winkworth.co.uk

See things differently



DESCRIPTION:

A stunning, one-double-bedroom apartment positioned on the third floor of this modern, well-kept block in Highbury, N5. Standing in excess of 500 sqft, the property offers wonderfully bright rooms with a full southerly aspect throughout giving excellent light the whole year. Accommodation comprises of an open plan living room/kitchen with a sizeable balcony leading directly off the living room creating the perfect space for entertaining. A good-sized double bedroom benefits from built in wardrobes and offers superb views across the well-kept communal gardens. The property is completed with a modern family sized bathroom and ample storage throughout.

The building itself has a concierge, on-site gym and bike storage.

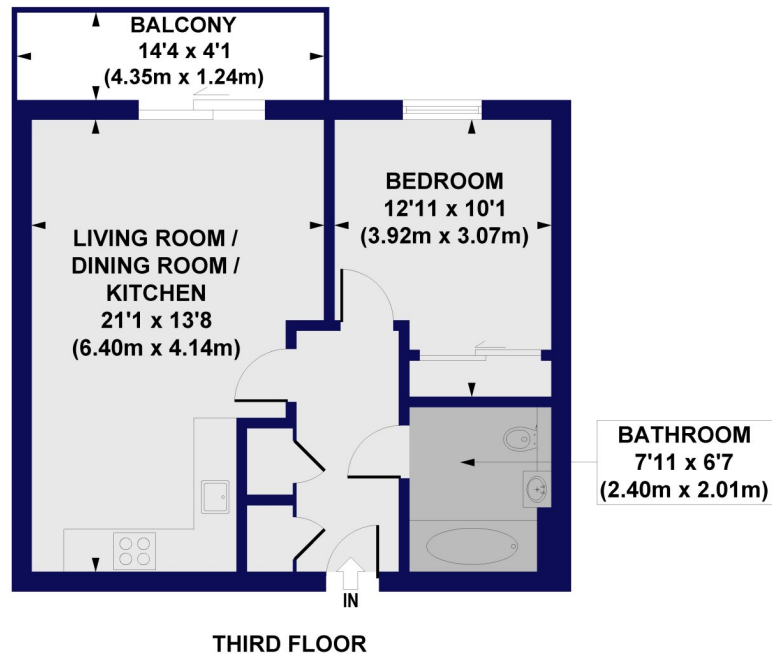
Terrace Apartments is moments away from the greenery of Highbury Fields, as well as the cafes, bars and restaurants of Upper Street. The ever-popular Highbury Barn, with its array of award-winning food shops and the Highbury Barn gastro pub, is also close by. There are superb transport links, with Highbury & Islington (Victoria Line), Holloway Road (Piccadilly Line), Arsenal (Piccadilly Line) and Drayton Park (National Rail, 10 minutes to Moorgate) all a short distance away.

Winkworth



Winkworth

Terrace Apartments, Drayton Park, N5
Approx. Gross Internal Floor Area 507 sq. ft / 47.10 sq. m



All measurements of walls, doors, windows, fittings and appliances, including their size and location, are shown as standard sizes and do not constitute any warranty or representation by the seller, their agent or CP Creative. Any intending purchaser must satisfy himself by inspection or otherwise as to the correctness of the information contained in these plans. This plan is for illustrative purposes only and should be used as such by any prospective purchasers.

Winkworth

This floorplan is for illustration purposes only and is not to scale. The position and size of doors, windows, appliances and other features are approximate.

Highbury | 0207 989 7000 | highbury@winkworth.co.uk

Winkworth

winkworth.co.uk

See things differently

Winkworth wishes to inform prospective buyers and tenants that these particulars are a guide and act as information only. All our details are given in good faith and believed to be correct at the time of printing but they don't form part of an offer or contract. No Winkworth employee has authority to make or give any representation or warranty in relation to this property. All fixtures and fittings, whether fitted or not are deemed removable by the vendor unless stated otherwise and room sizes are measured between internal wall surfaces, including furnishings.