



PILKINGTON COURT, LONDON, NW4
£279,800 LEASEHOLD

**A LARGER THAN AVERAGE ONE BEDROOM
SECOND FLOOR APARTMENT LOCATED WITHIN A
PURPOSE BUILT BLOCK IN HENDON**

Hendon | 020 8202 1031 | hendon@winkworth.co.uk



DESCRIPTION:

This is a larger than average one bedroom second floor apartment located within a purpose built block in Hendon and is presented in immaculate condition throughout. The apartment is situated close to Middlesex University together with many transport links, making it an ideal buy to let or first time buyer opportunity. The apartment offers bright and spacious living accommodation extending to c. 524sq. ft. and comprises a large living room with semi-open plan kitchen, tiled bathroom and a large master bedroom. Further benefits include: off street parking, entry phone system, double glazed windows, ample storage and sold chain free. Leasehold.

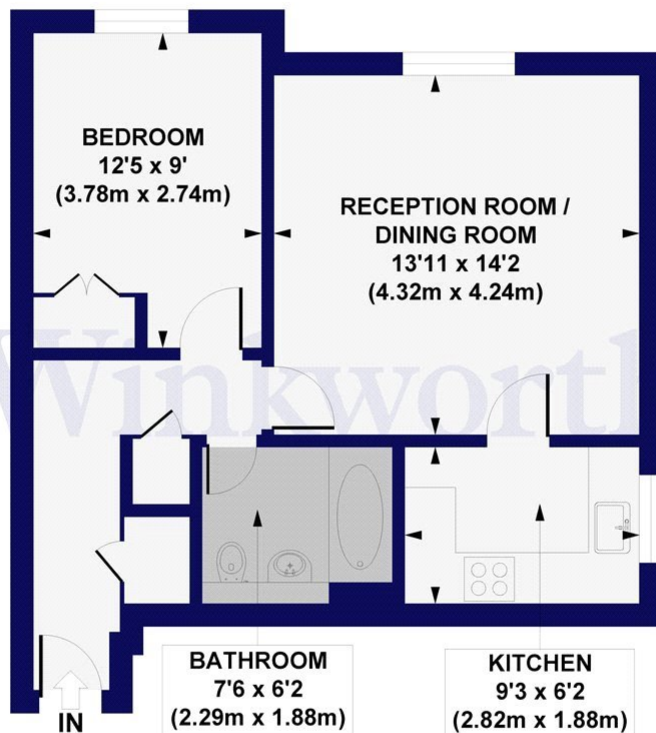
AT A GLANCE

- LARGER THAN AVERAGE ONE BEDROOM APARTMENT
- CLOSE TO UNIVERSITY AND TRANSPORT LINKS
- SECOND FLOOR
- GREAT CONDITION
- GOOD BUY TO LET AND/OR FIRST TIME BUY
- LEASEHOLD





Pilkington Court, Alwyn Gardens, NW4
 Approx. Gross Internal Floor Area 524 sq. ft / 48.68 sq. m



SECOND FLOOR

All measurements of walls, doors, windows, fittings and appliances, including their size and location, are shown as standard sizes and do not constitute any warranty or representation by the seller, their agent or CP Creative. Any intending purchaser must satisfy himself by inspection or otherwise as to the correctness of the information contained in these plans.

This floorplan is for illustration purposes only and is not to scale. The position and size of doors, windows, appliances and other features are approximate.

