



## Alexandra Mansions, Stanlake Road, London, W12

£850,000 Share of Freehold

A two double bedroom patio flat in an attractive mansion block in the heart of Shepherds Bush.

*Discl: Please note that the photos were taken when the property was rented and fully furnished.*

Reception Room | Kitchen | 2 Bedrooms | Bathroom | Utility Room | Patio | 837 Sq Ft / 78 Sq M | Council Tax Band E | EPC Rating Band D

**Winkworth**





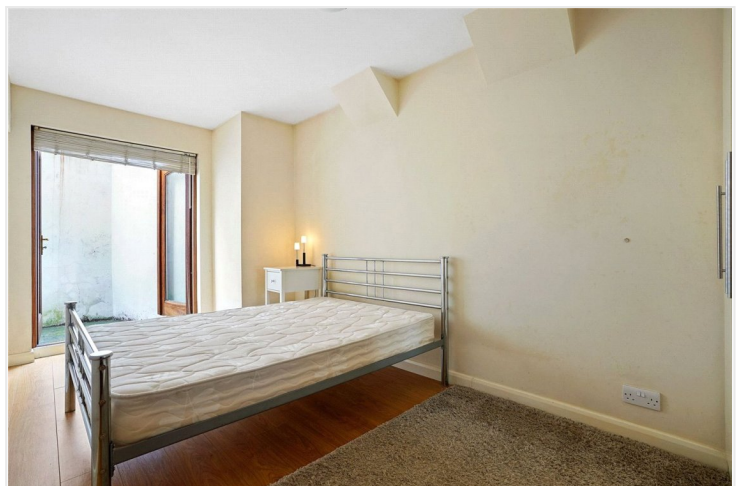
## LOCATION

Stanlake Road is an attractive quiet residential tree lined street, moments from all the local amenities and transport links Shepherd's Bush has to offer. Television Centre, Soho House and Westfield London are all within easy reach, with Shepherd's Bush Market (Hammersmith and City and Circle line) and Shepherds Bush (Central line and Overground) being the closest stations.

## DESCRIPTION

This spacious property comprises two good sized double bedrooms, bathroom, contemporary kitchen/dining room, bright reception room leading to a patio area.

Service Charge : Paid on an ad hoc basis







**LOCAL AUTHORITY**  
Hammersmith & Fulham

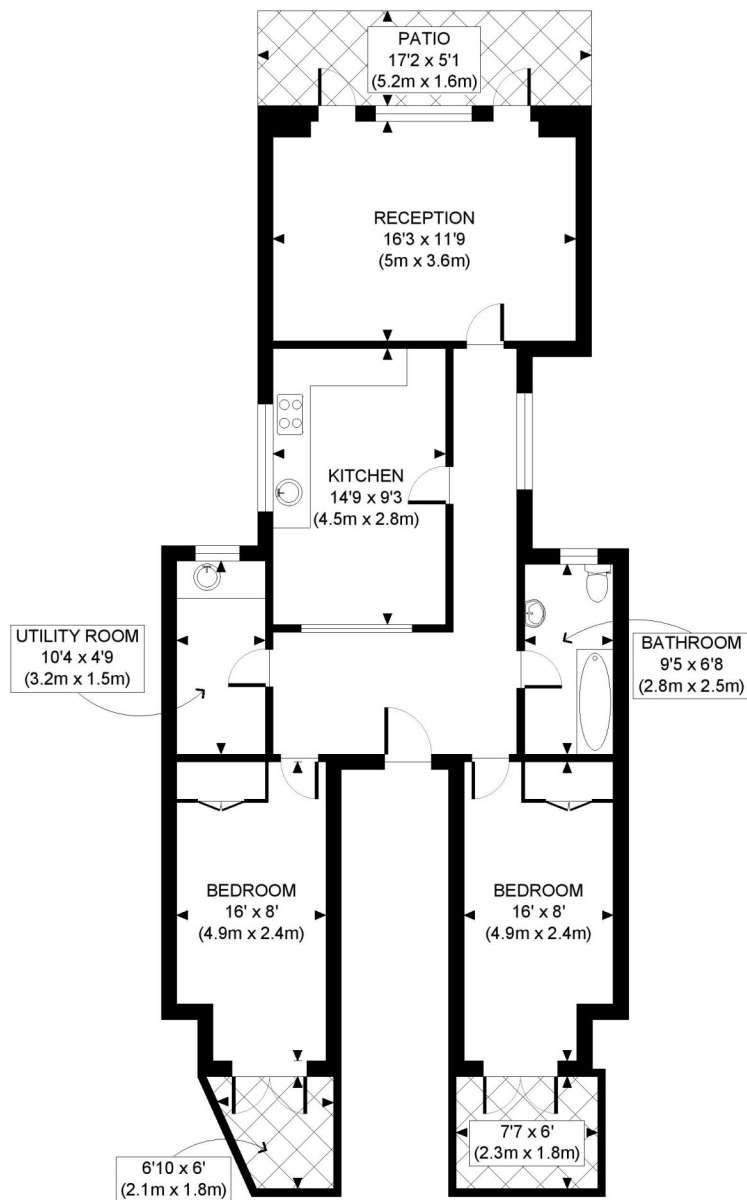
**TENURE**  
Share of Freehold.

**PRICE:** £850,000 Share of Freehold



Score	Energy rating	Current	Potential
92+	<b>A</b>		
81-91	<b>B</b>		
69-80	<b>C</b>		78 C
55-68	<b>D</b>	68 D	
39-54	<b>E</b>		
21-38	<b>F</b>		
1-20	<b>G</b>		





LOWER GROUND FLOOR  
GROSS INTERNAL  
FLOOR AREA 837 SQ FT



APPROX. GROSS INTERNAL FLOOR AREA: 837 SQ FT/ 78 SQM

**Winkworth**

This plan is for illustrative purposes only and should be used as such by any prospective client. Whilst every attempt has been made to ensure the accuracy of the Floor Plan contained here, measurements of the doors, windows, rooms and any other items are approximate and no responsibility is taken for any errors, omissions, or misstatement. The services, systems and appliances shown have not been tested and no guarantee as to the operability or efficiency can be given.

**PROPERTY PHOTO PLANS** CO.UK  
THE STOP STOP FOR PROPERTY MEASUREMENTS

The displayed square footage is taken from the floor plans with measurements created using the Royal Institute of Chartered Surveyors' Code of Practice for Measuring. These measurements are approximate and included for illustrative purposes only. Winkworth does not make any representation as to the accuracy of these measurements and you should seek to verify them for yourself. Winkworth accept no liability for any loss you may suffer if you rely on these measurements.

Shepherds Bush | 020 8735 3266 | [shepherdsbush@winkworth.co.uk](mailto:shepherdsbush@winkworth.co.uk)

**Winkworth**

**for every step...**

Under the Property Misdescriptions Act 1991, these Particulars are a guide and act as information only. All details are given in good faith and are believed to be correct at time of printing. Winkworth give no representation as to their accuracy and potential purchasers or tenants must satisfy themselves by inspection or otherwise as to their correctness. No employee of Winkworth has authority to make or give any representation or warranty in relation to this property.