



Regent Court, Finchley, London, N3

£300,000 *Leasehold*



Winkworth is pleased to offer this one bedroom, second floor apartment, set in a purpose built block.

The property is situated close to Victoria park, and within walking distance to West Finchley & Finchley Central underground Station (Northern Line) and Ballards Lane amenities.

KEY FEATURES

- Purpose built block
- Second floor
- Open plan living
- Double bedroom
- Long lease
- Parking
- Ideal location for amenities & transport
- Chain free



Finchley

020 8349 3388 | finchley@winkworth.co.uk

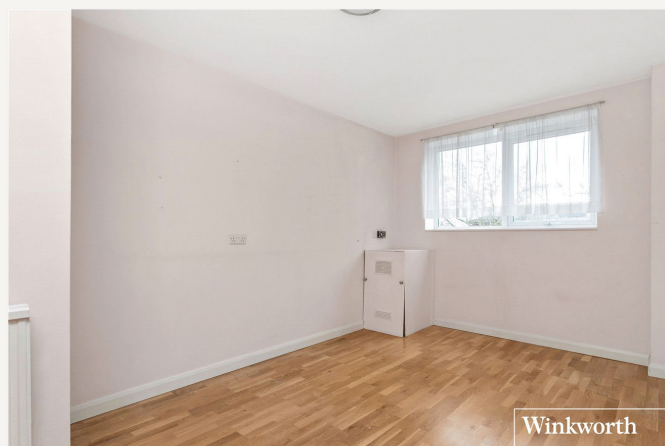
Winkworth

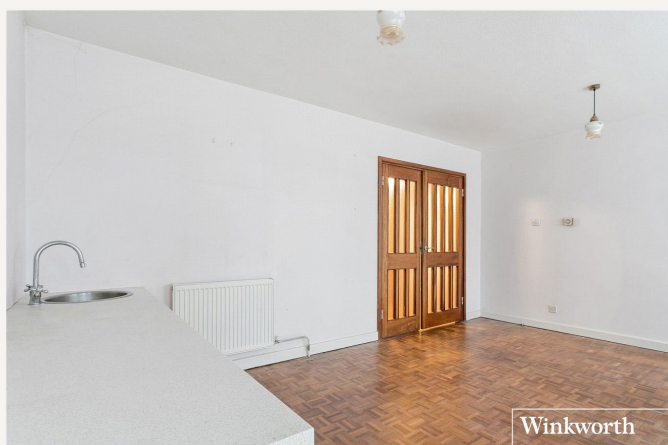
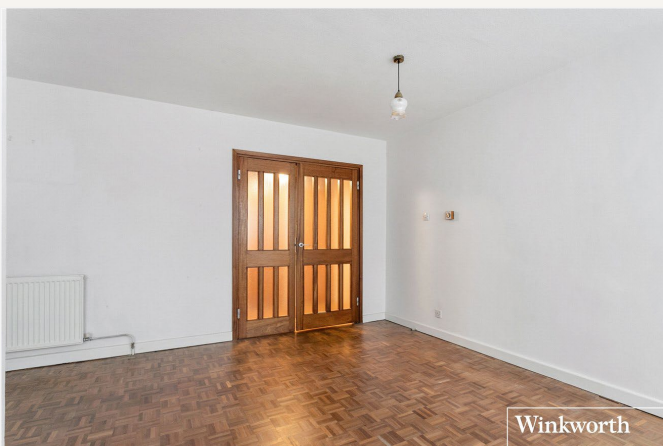
for every step...



This property comprises an open plan living/ dining / kitchen area, double bedroom and bathroom.

Offered on a chain free basis with a long lease and parking space.

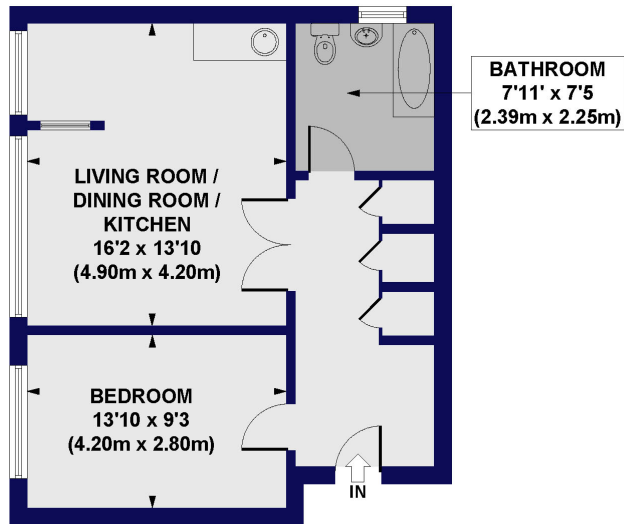




MATERIAL INFO

Tenure: Leasehold
Term: 977 year and 8 months
Service Charge: £2067.54 per annum
Ground Rent: £0 Annually (subject to increase)
Council Tax Band: C
EPC rating: D

Regent Court, Ballards Lane, N3
Approx. Gross Internal Floor Area 540 sq. ft / 50.20 sq. m



FIRST FLOOR

All measurements of walls, doors, windows, fittings and appliances, including their size and location, are shown as standard sizes and do not constitute any warranty or representation by the seller, their agent or CP Creative. Any intending purchaser must satisfy himself by inspection or otherwise as to the correctness of the information contained in these plans. This plan is for illustrative purposes only and should be used as such by any prospective purchasers.

Winkworth

| Score | Energy rating | Current | Potential |
|-------|---------------|---------|-----------|
| 92+ | A | | |
| 81-91 | B | | |
| 69-80 | C | | 79 C |
| 55-68 | D | 63 D | |
| 39-54 | E | | |
| 21-38 | F | | |
| 1-20 | G | | |

For more information, scan the QR code or visit the link below



<https://www.winkworth.co.uk/sale/property/FIN190313>

Where no figures are shown, we have been unable to ascertain the information. All figures that are shown were correct at the time of printing.

Finchley

020 8349 3388 | finchley@winkworth.co.uk

Winkworth

for every step...

Winkworth wishes to inform prospective buyers and tenants that these particulars are a guide and act as information only. All our details are given in good faith and believed to be correct at the time of printing but they don't form part of an offer or contract. No Winkworth employee has authority to make or give any representation or warranty in relation to this property. All fixtures and fittings, whether fitted or not are deemed removable by the vendor unless stated otherwise and room sizes are measured between internal wall surfaces, including furnishings.