



LEATHER LANE, EC1N
£880,000

**A LARGE DUPLEX APARTMENT ON THE CORNER
OF LEATHER LANE AND BALDWINS GARDENS.**

Clerkenwell | 020 7405 1288 | clerkenwell@winkworth.co.uk

Winkworth

for every step...

winkworth.co.uk



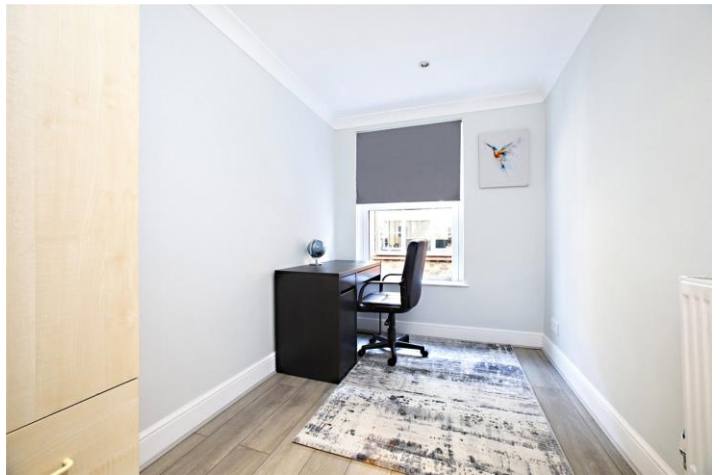
DESCRIPTION:

The ground floor of the property comprises well maintained communal entrance hall, well-proportioned reception with French oak parquet flooring and an open plan kitchen with modern fitted units with integrated appliances. The first floor comprises three bedrooms, built in wardrobes and a modern bathroom. The apartment has recently been finished to a very high standard. Leather Lane is famous for its street food market with retailers offering a range of different foods from around the world.



Winkworth

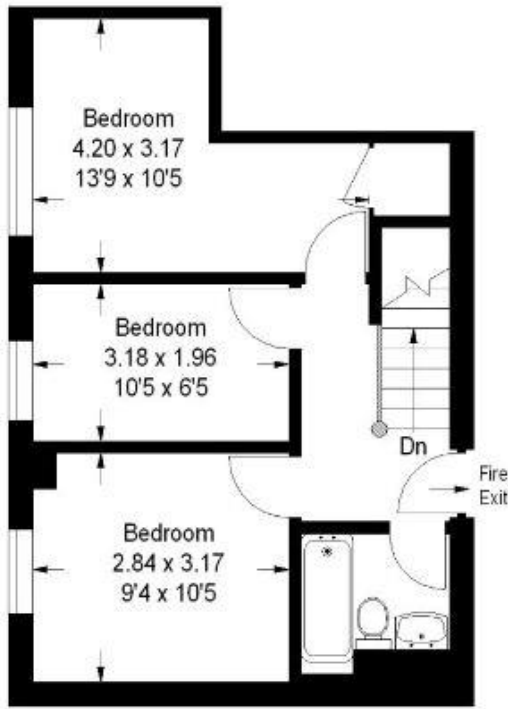
for every step...



Winkworth

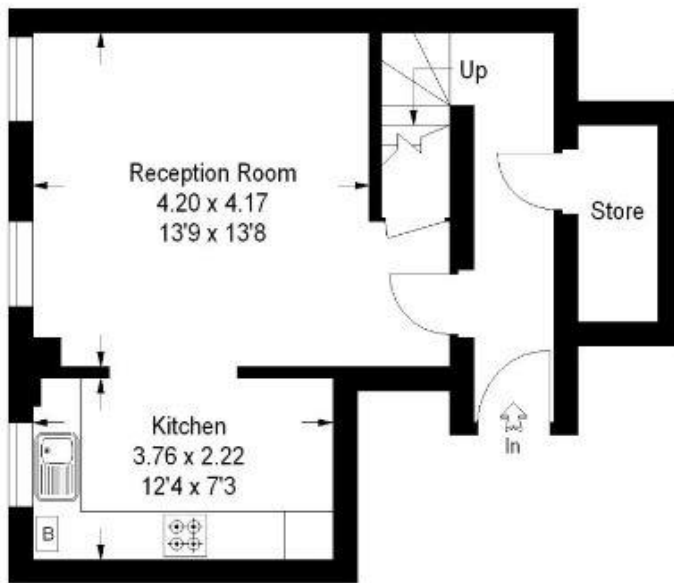
for every step...

Leather Lane, EC1N



First Floor

Approximate Gross Internal Area :-
78 sq m / 840 sq ft



Ground Floor

FLOORPLANZ © 2007
01483 755510 Ref 28698
This illustration is for identification purposes only. Measured & drawn in accordance with RICS / PAS guidelines. Not drawn to scale unless stated. Dimensions shown are to the nearest 2.5 cm / 3" & are through cupboards / vestibules to wall surfaces where possible or where indicated by arrow heads. Whilst every care is taken in the preparation of this plan, please check all dimensions, shapes & compass bearings before making any decisions reliant upon them.

This floorplan is for illustration purposes only and is not to scale. The position and size of doors, windows, appliances and other features are approximate.

Clerkenwell | 020 7405 1288 | clerkenwell@winkworth.co.uk

Winkworth

for every step...

winkworth.co.uk

Winkworth wishes to inform prospective buyers and tenants that these particulars are a guide and act as information only. All our details are given in good faith and believed to be correct at the time of printing but they don't form part of an offer or contract. No Winkworth employee has authority to make or give any representation or warranty in relation to this property. All fixtures and fittings, whether fitted or not are deemed removable by the vendor unless stated otherwise and room sizes are measured between internal wall surfaces, including furnishings.