



COPLEY PARK, SW16
£1,200,000 FREEHOLD

Winkworth

COPLEY PARK, SW16

Nestling to the south of Streatham Common in a protected conservation area of attractive Edwardian and Victorian houses surrounded by greenery, we are delighted to offer for sale this three-bedroom semi-detached house.

Winkworth are delighted to present for sale this bright and spacious semi-detached house. This attractive property has well-proportioned living space with original features and lots of natural light from the large windows and glazed doors.

The accommodation briefly comprises of a large hallway, two reception rooms, a separate fitted kitchen, and a spacious bedroom on the ground floor. Leading upstairs there are two additional bedrooms, one with an en-suite shower room and the family bathroom has a bathtub with a shower overhead, a wash hand basin and a WC, completing the space. Parking is made easy with an off-street parking space for at least two cars and the garden is a good size, perfect for summer entertaining. There is plenty of scope for improvement and this property would suit a buyer wanting a project to turn this into a wonderful family home again.

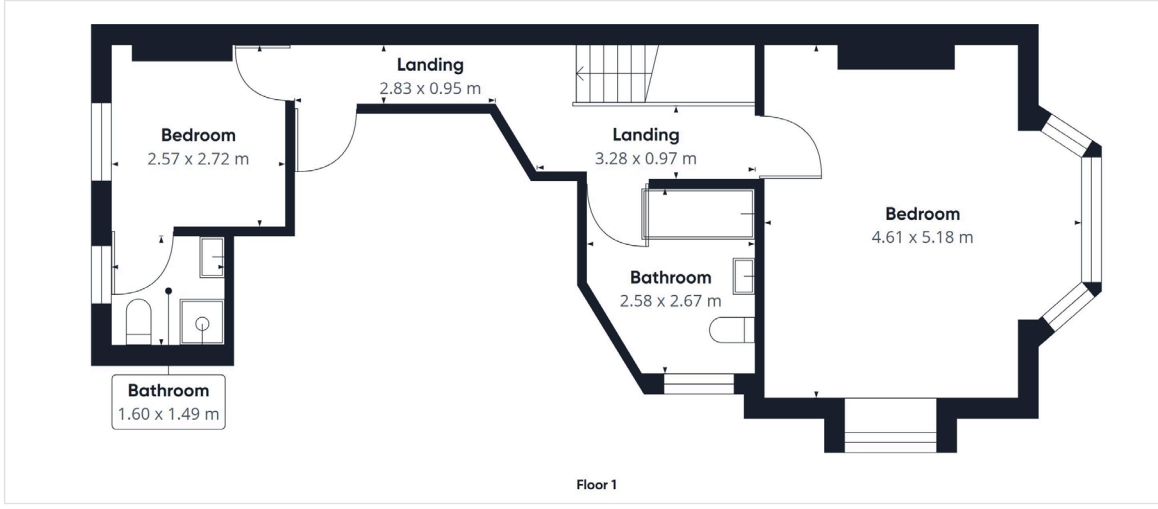
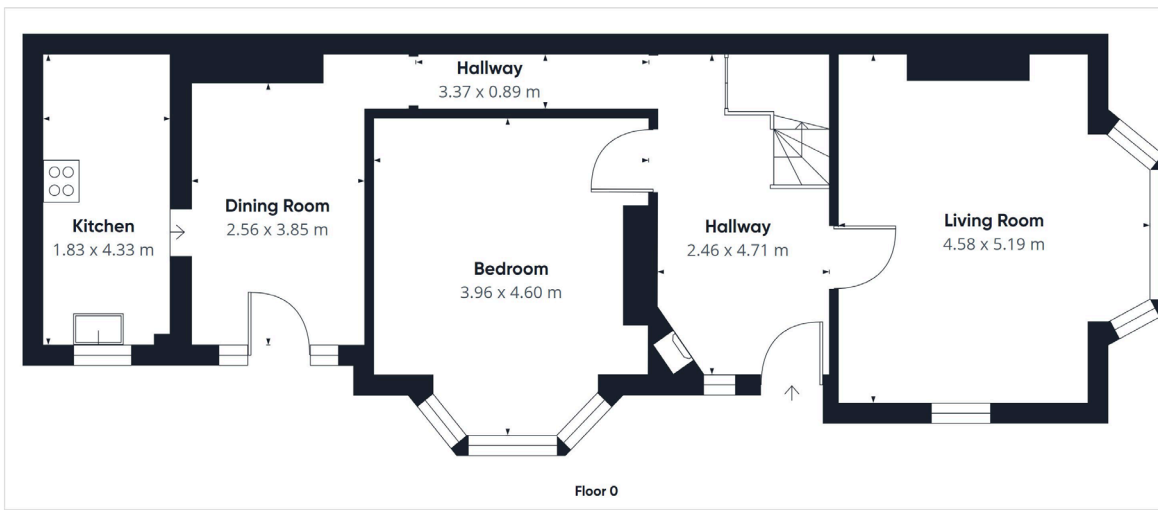
Copley Park is located within easy reach of Streatham Common, Streatham (Thameslink) and Norbury stations with easy commuting into the City and West End. There are several large supermarkets as well as the popular gastro-pub "The Bull" and several other cafes, shops and pubs close by. Streatham leisure centre and ice-rink as well as the beautiful Rookery Gardens and Streatham Common are on your doorstep with year-round fun activities such as Festivals and Fun Fairs, a Kite Day and bonfire night to name but a few.

LOCATION

Streatham Common (Conservation Area)





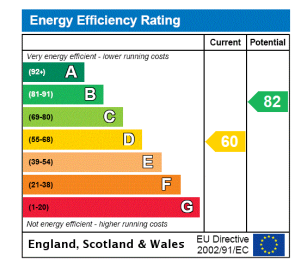


Approximate total area⁽¹⁾
116.91 m²

(1) Excluding balconies and terraces

While every attempt has been made to ensure accuracy, all measurements are approximate, not to scale. This floor plan is for illustrative purposes only.

GIRAFFE360



Streatham | 020 8769 6699 | streatham@winkworth.co.uk

winkworth.co.uk

Winkworth wishes to inform prospective buyers and tenants that these particulars are a guide and act as information only. All our details are given in good faith and believed to be correct at the time of printing but they don't form part of an offer or contract. No Winkworth employee has authority to make or give any representation or warranty in relation to this property. All fixtures and fittings, whether fitted or not are deemed removable by the vendor unless stated otherwise and room sizes are measured between internal wall surfaces, including furnishings.

