



WANSFORD PARK, HERTFORDSHIRE, WD6
£440,000 FREEHOLD

THREE BEDROOM TUNNEL LINKED TERRACE HOUSE WITH OFF STREET PARKING

Borehamwood | 020 8953 8899 | borehamwood@winkworth.co.uk



DESCRIPTION:

Located on the Southside of Borehamwood overlooking Tempsford green. The property comprises entrance porch leading hallway, two reception rooms and Kitchen/breakfast room to the ground floor, on the first floor there are three bedrooms and family bathroom.

Benefits include southerly facing rear garden with side access, off street parking to the front for one car.

Ideally located for local shops, bus routes to Edgware and Barnet. Easy access to A1

AT A GLANCE

- 3 Bedrooms
- Kitchen Breakfast Room
- Two Reception Rooms
- Bathroom
- Garden
- Off Street Parking





Winkworth



Winkworth

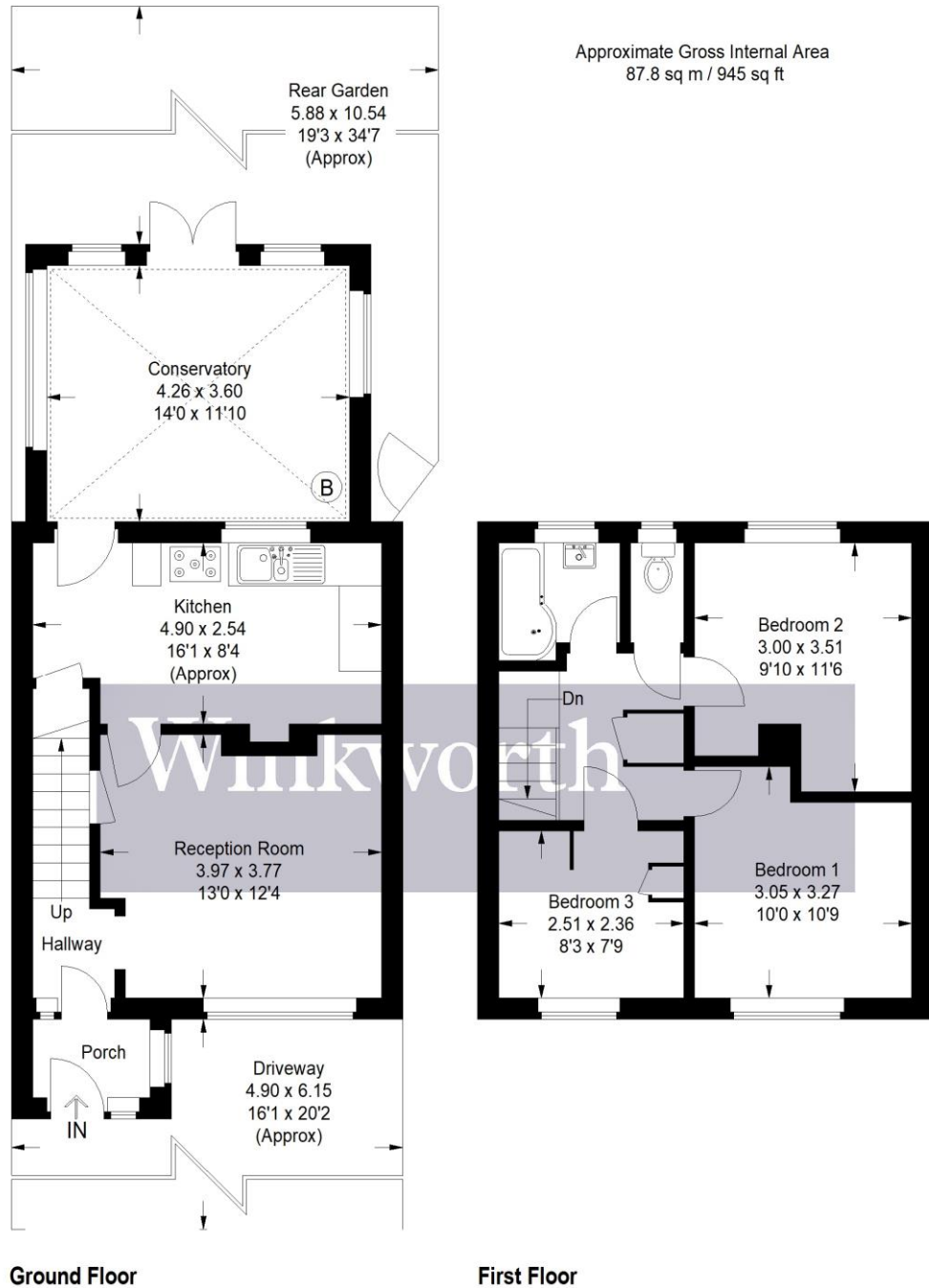
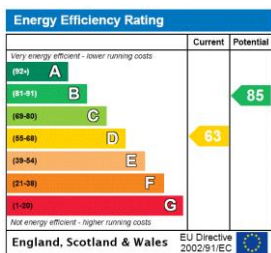


Illustration for identification purposes only, measurements are approximate, not to scale. Winkworth © 2022 (ID 918053)

This floorplan is for illustration purposes only and is not to scale. The position and size of doors, windows, appliances and other features are approximate.



Borehamwood | 020 8953 8899 | borehamwood@winkworth.co.uk