

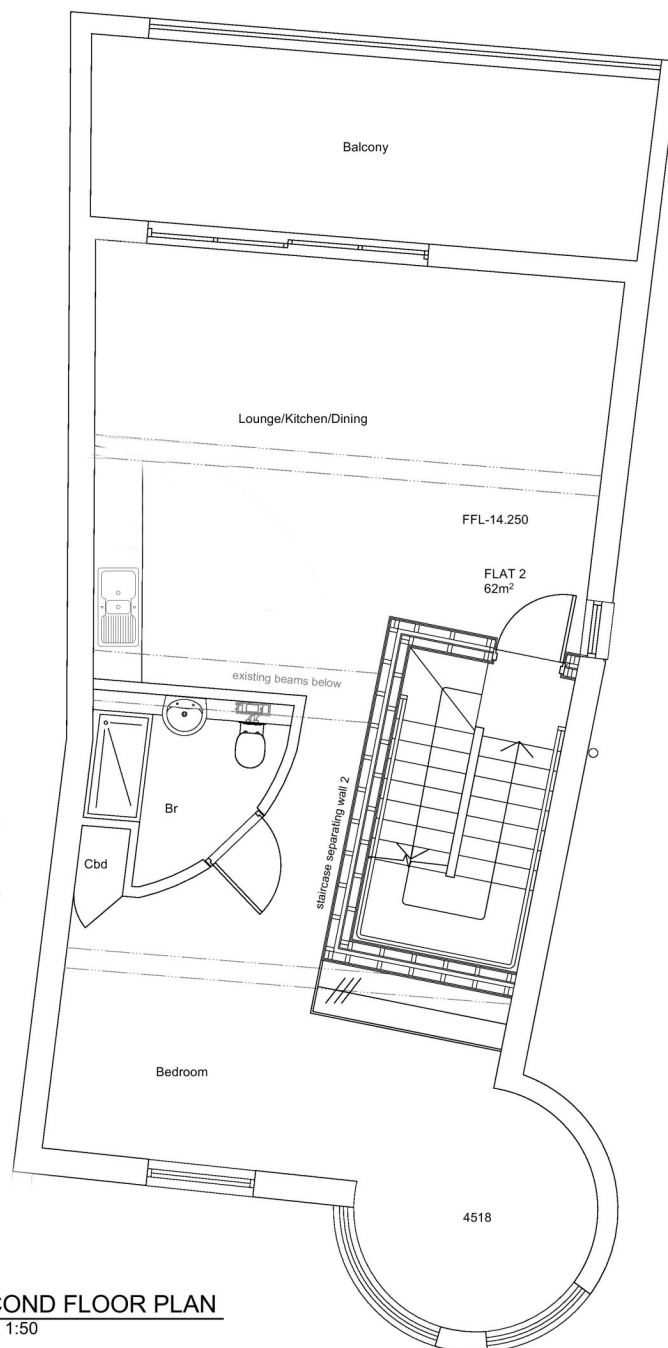


BLACKHEATH ROAD, GREENWICH, LONDON, SE10
£1,850 PER MONTH UNFURNISHED

DESCRIPTION:

Set within this unique building known as the “Latin Quarter” and located just 285 metres from the DLR, and very close to Greenwich town centre and Blackheath Village, is this stylish and impressive, one double bedroom apartment with a large private covered terrace. Available immediately

Blackheath | 0208 8520999 | blackheath@winkworth.co.uk



5 **SECOND FLOOR PLAN**
Scale: 1:50

This floorplan is for illustration purposes only and is not to scale. The position and size of doors, windows, appliances and other features are approximate.

Score	Energy rating	Current	Potential
92+	A		
81-91	B		
69-80	C	72 C	72 C
55-68	D		
39-54	E		
21-38	F		
1-20	G		

Deposit: £2,134.62

Holding Deposit:

Council Tax Band:

Where no figures are shown, we have been unable to ascertain the information. All figures that are shown were correct at the time of printing.