



LAMBOURNE PLACE, BLACKHEATH, LONDON, SE3 7BH
GUIDE PRICE £600,000-£650,000 FREEHOLD

A SUPERB AND WELL PRESENTED THREE BEDROOM MODERN HOUSE WITH A 30FT GARDEN AND GARAGE SET WITHIN THIS POPULAR AND PRIVATE CUL-DE-SAC JUST A FEW MINUTES' WALK FROM THE HEATH AND SOLD CHAIN FREE.

Blackheath | 0208 8520999 | blackheath@winkworth.co.uk

Winkworth

winkworth.co.uk

See things differently



DESCRIPTION:

The accommodation comprises; entrance hall with shoe rack, a spacious dual aspect reception room with living and dining area and a separate modern kitchen. Upstairs are three bedrooms including a generous master with built in wardrobes, and modern family bathroom. To the rear is a low maintenance paved garden with rear access. The property has the additional benefit of a garage en bloc and private residents parking. The property is in good decorative order with wood flooring, double glazed windows and gas fired central heating.

This is an excellent home and sold chain free. Your immediate viewing is essential. Video tour can be seen at Winkworth.co.uk

The property is located just 600 metres from the Heath and 0.75 miles from Blackheath Village with its array of restaurants, bars, boutique shops and farmer's market. The daily conveniences of Blackheath Standard are only a few hundred yards away including an M&S food hall. The fabulous Royal Greenwich Park is just 0.6 miles with Greenwich town centre beyond. Greenwich maintains a quaint rural village feel and is steeped in history from Roman remains and ancient burial grounds to the old Royal Naval hospital, the Royal Observatory, the National Maritime Museum, and the spectacularly restored Cutty Sark, the last of the great tea clippers. Greenwich's covered market is one of London's best and attracts people from all over the capital. There are several highly sought-after Independent Schools close by including Blackheath Preparatory School, The Pointer School, Heath House Preparatory School, Blackheath High Junior School, Blackheath High Seniors School, Colfes (1.4 miles) and Eltham College (2.4 miles). There are superb transport links with Blackheath Station giving access to London Bridge, Charing Cross, and Victoria amongst others. The O2 arena is close by with the DLR, bus, riverboat, foot tunnel and cable car all within easy reach; and Canary Wharf, the City and central London are just minutes away via the Jubilee Line at North Greenwich - just one of the reasons why it's increasingly popular with professionals and commuters.

AT A GLANCE

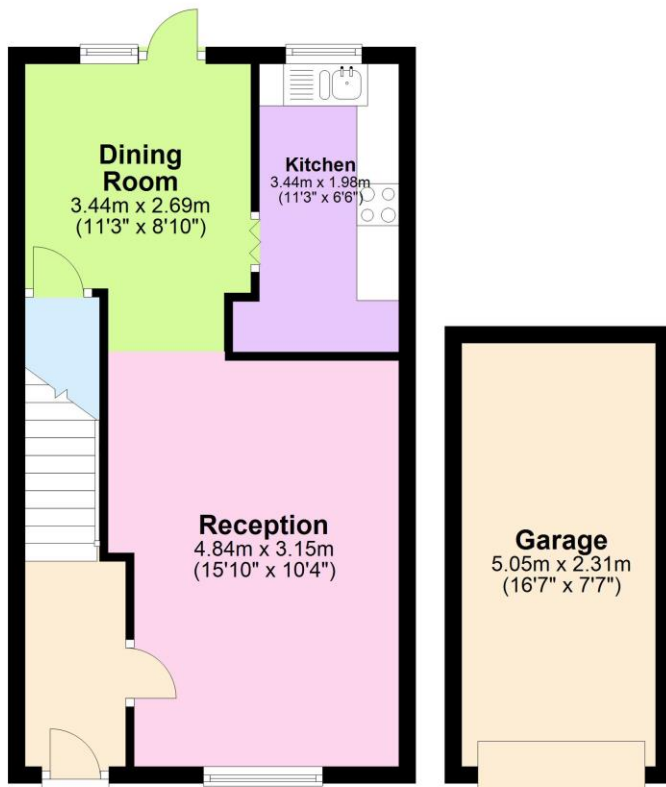
- modern house
- three bedrooms
- excellent condition
- good size garden
- garage en bloc
- chain free
- delightful cul-de-sac
- close to the heath





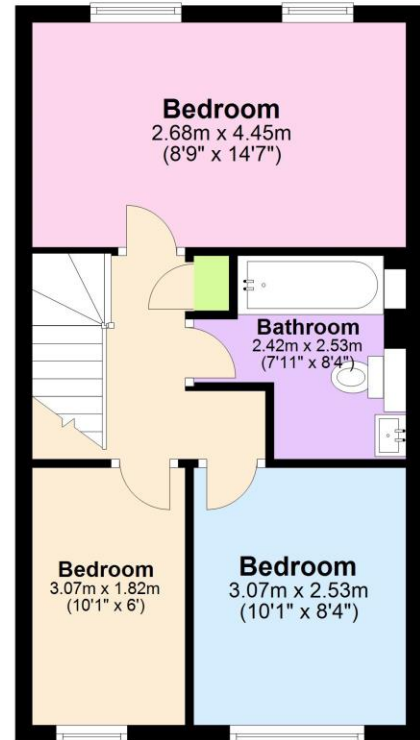
Ground Floor

Approx. 48.9 sq. metres (526.8 sq. feet)



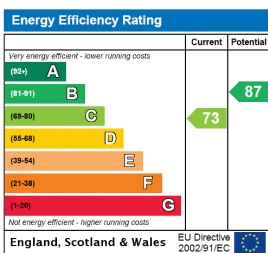
First Floor

Approx. 37.3 sq. metres (401.3 sq. feet)



Total area: approx. 86.2 sq. metres (928.1 sq. feet)

This floorplan is for illustration purposes only and is not to scale. The position and size of doors, windows, appliances and other features are approximate. Any lease and service charge details have been provided by the vendor. Any interest party should have these checked by a solicitor as part of the purchase process.



Blackheath | 0208 8520999 | blackheath@winkworth.co.uk

Winkworth

winkworth.co.uk

See things differently

Winkworth wishes to inform prospective buyers and tenants that these particulars are a guide and act as information only. All our details are given in good faith and believed to be correct at the time of printing but they don't form part of an offer or contract. No Winkworth employee has authority to make or give any representation or warranty in relation to this property. All fixtures and fittings, whether fitted or not are deemed removable by the vendor unless stated otherwise and room sizes are measured between internal wall surfaces, including fumishings.