



Claverton Street, UK, SW1V

£2,300 PER MONTH

FURNISHED

#### AT A GLANCE

- One Double Bedroom
- Large Reception
- Top Floor
- Split Level
- Council Tax Band: D

**Winkworth**

for every step...

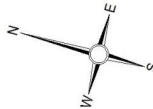


| Score | Energy rating | Current | Potential |
|-------|---------------|---------|-----------|
| 92+   | A             |         |           |
| 81-91 | B             |         |           |
| 69-80 | C             | 69 C    | 80 C      |
| 55-68 | D             |         |           |
| 39-54 | E             |         |           |
| 21-38 | F             |         |           |
| 1-20  | G             |         |           |

## CLAVERTON STREET, UK, SW1V

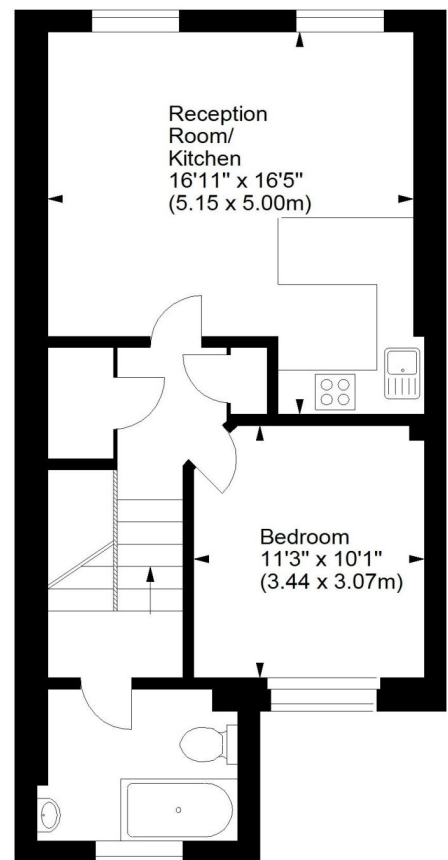
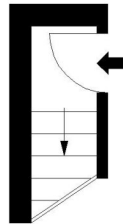
£2,300 PER MONTH  
FURNISHED

The well-appointed accommodation comprises hall way with storage and a spacious open plan reception room with plenty of space to dine and entertain and a modern fitted kitchen with useful breakfast bar. The generous double bedroom is flooded with natural light and there's a sizeable family bathroom to the rear of the property.



## Claverton Street, SW1

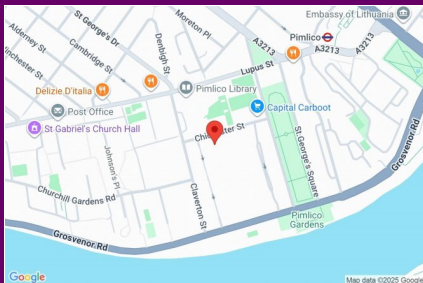
Approx. Gross Internal Area  
561 Sq Ft - 52.12 Sq M



## Second Floor Entrance (2.11 sq m)

## Third Floor (50.02 sq m)

For illustration purposes only. Not to scale.  
All measurements are taken and shown at floor level.  
www.r3photography.co.uk © Photography / Floor Plans / Lease Plans / EPCs



winkworth wishes to inform prospective buyers and tenants that these particulars are a guide and act as information only. All our details are given in good faith and believed to be correct at the time of printing but they don't form part of an offer or contract. No winkworth employee has authority to make or give any representation or warranty in relation to this property. All fixtures and fittings, whether fitted or not are deemed removable by the vendor unless stated otherwise and room sizes are measured between internal wall surfaces - including fireplaces.

Pimlico & Westminster | 020 7828 1786 |  
pimlico@winkworth.co.uk

winkworth.co.uk/pimlico

**Winkworth**

for every step...