

Spencer Mews, Stockwell, London, SW8

£349,950 Leasehold

A fantastic opportunity to acquire a one-bedroom period conversion flat, located within a smart gated development in the centre of Stockwell.

Winkworth

LOCATION

The flat is located within a gated development, which is just off Lansdowne Way. Lansdowne Way is found between Clapham Road and South Lambeth Road. There is a vast range of local amenities and eateries in the local area to include supermarkets, restaurants, and coffee shops. The flat itself is a stone's throw away from Stockwell Underground Station.

DESCRIPTION

A fantastic opportunity to acquire a one-bedroom period conversion flat, located within a smart gated development in the centre of Stockwell.

Enter the flat on the second floor and you are greeted by a spacious hallway with entry phone intercom and engineered wooden flooring.

Immediately to your right, you will find the modern tiled bathroom equipped with bath with overhead rainfall shower, sink with vanity and storage below, heated towel rail, extraction, and W.C.

The bedroom is located on the right when entering the flat and is of a generous size providing space for a double bed with additional space reserved for free-standing furniture. The bedroom is wonderfully bright thanks to its south facing aspects with views over the courtyard below.

The kitchen is open plan to the reception room, with engineered wooden flooring, solid wood worktops, and white units for storage. The kitchen is equipped with an electric fan-powered oven with induction and extraction, sink, large fridge/freezer, dishwasher and washing machine.

The adjacent sitting room can accommodate an L-shaped sofa, coffee table, and a small dining table and chairs.

LOCAL AUTHORITY

London Borough Of Lambeth

TENURE

Leasehold - 118 years

Ground Rent - £250.00 per annum

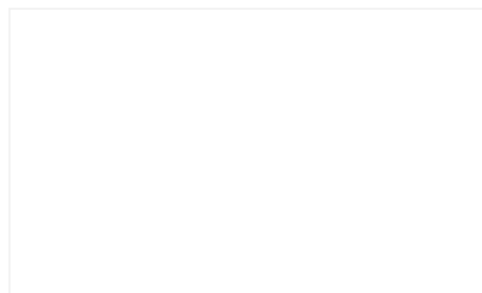
Service Charge - £736.90 per annum

Council Tax Band – D

EPC - TBC

DIRECTIONS

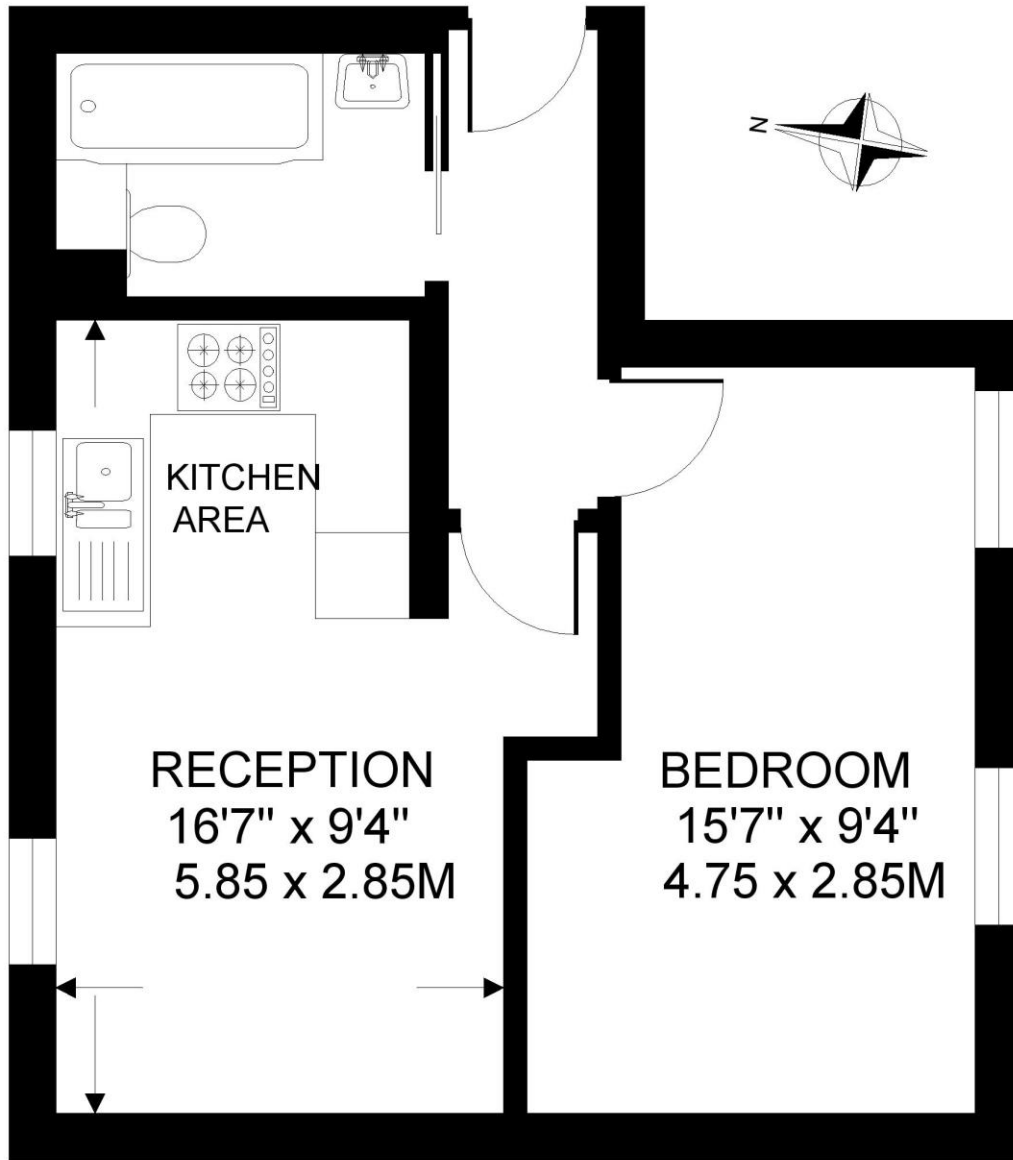
Stockwell Underground Station (Victoria Line & Northern Line) is approximately 0.2 miles away. The area is also well served by a frequent bus service into the City, West End and beyond.





SPENCER MEWS. SW8
1 BEDROOM FLAT

Approximate gross floor area
375 SQ.FT / 34.8 SQ.M.



SECOND FLOOR

This floorplan is for illustration purposes only and is not to scale. The position and size of doors, windows, appliances and other features are approximate.

Copyright: These plans should not be reproduced by any other person, without permission.
Floorplan produced for Winkworth by Floorplanners 07801 228850

Kennington | 020 7587 0600 | kennington@winkworth.co.uk