

John Islip Street, SW1P

£7,000 PER MONTH

UNFURNISHED

AT A GLANCE

- Three Bedrooms
- Three Bathrooms (2 En-suite)
- Private Balcony
- Underground Parking
- Swimming Pool, Gym and Health Spa
- Council Tax Band - H

Winkworth

for every step...



Score	Energy rating	Current	Potential
92+	A		
81-91	B	88 B	88 B
69-80	C		
55-68	D		
39-54	E		
21-38	F		
1-20	G		

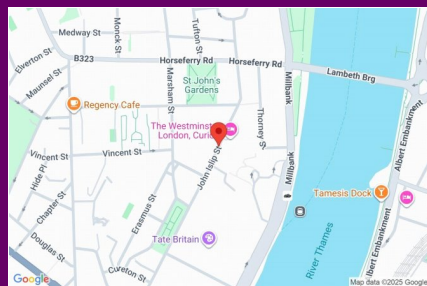
JOHN ISLIP STREET, SW1P

£7,000 PER MONTH

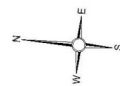
UNFURNISHED

This outstanding three double bedroom apartment is located on the fifth floor (with lift) and comprises a substantial open plan reception room with a superb private balcony and a highly specified, bespoke fitted kitchen with Kuppertsbusch integrated appliances. The impressive master bedroom has its own dressing area with comprehensively fitted wardrobes and a luxurious en-suite bathroom. There are two further double bedrooms (one en-suite), an additional shower room and plenty of storage options throughout. The development sits in beautiful landscaped gardens and residents benefit from unparalleled communal facilities including swimming pool, gym, health spa and 24hr concierge.

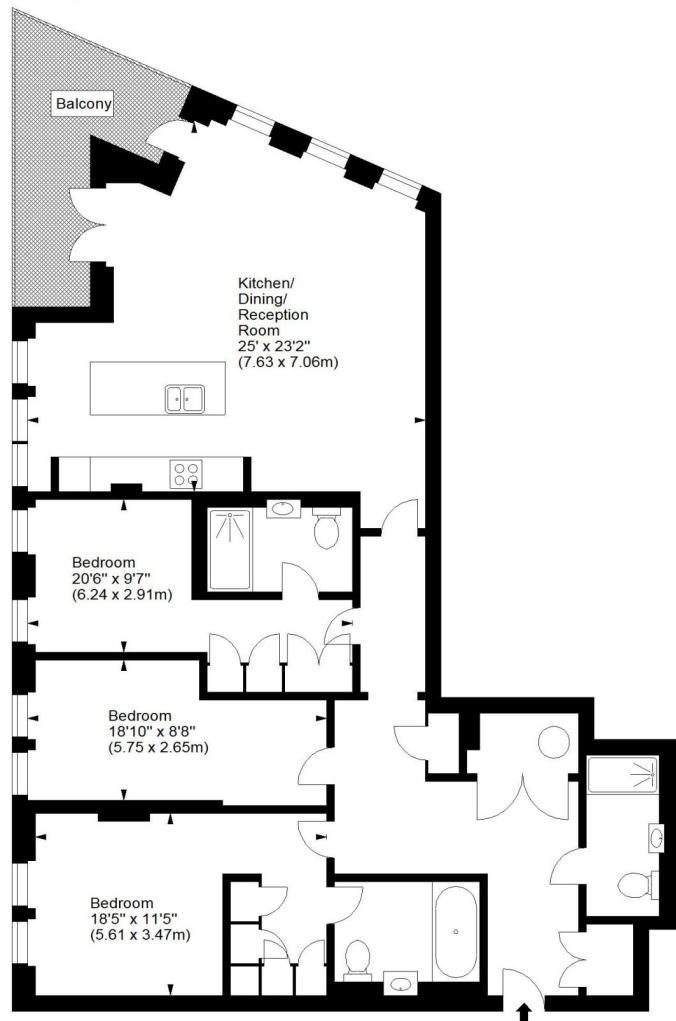
Abell House is ideally situated in the heart of Westminster and only moments from the River Thames, Houses of Parliament, The Tate Britain and Buckingham Palace. There is an abundance of local amenities on the doorstep including boutique shops, cafes, bars and restaurants and at nearby Victoria Street with its extensive selection of international retail outlets and world famous theatres.



winkworth wishes to inform prospective buyers and tenants that these particulars are a guide and act as information only. All our details are given in good faith and believed to be correct at the time of printing but they don't form part of an offer or contract. No winkworth employee has authority to make or give any representation or warranty in relation to this property. All fixtures and fittings, whether fitted or not are deemed removable by the vendor unless stated otherwise and room sizes are measured between internal wall surfaces, including fireplaces.



Abell House, SW1
Approx. Gross Internal Area
1502 Sq Ft - 139.54 Sq M



Fifth Floor

For illustration purposes only. Not to scale.
All measurements are taken and shown at floor level.
www.r3photography.co.uk © Photography / Floor Plans / Lease Plans / EPCs

Pimlico & Westminster | 020 7828 1786 |
pimlico@winkworth.co.uk

winkworth.co.uk/pimlico

Winkworth

for every step...