



Milland Court, Hertfordshire, WD6

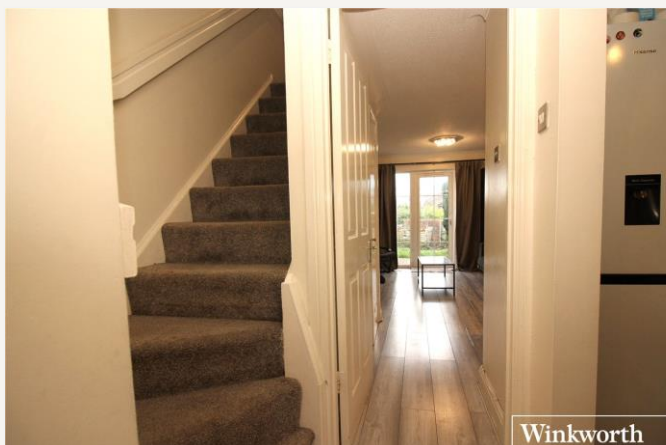
£425,000 *Freehold*

2  1  1 

A CHAIN FREE TWO DOUBLE BEDROOM HOUSE  
WITH PARKING

#### KEY FEATURES

- Two Double Bedrooms
- Chain Free
- Driveway for up to 2 Cars
- Guest Cloakroom
- South-Westerly Rear Garden
- 646 Square Feet



**Borehamwood**

020 8953 8899 | [borehamwood@winkworth.co.uk](mailto:borehamwood@winkworth.co.uk)



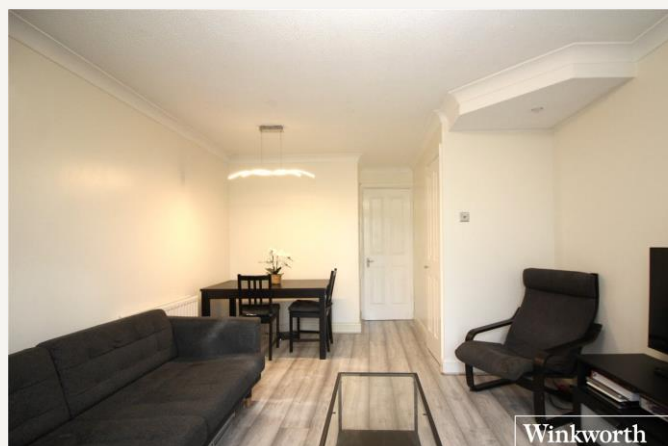


A mid-terrace two-bedroom house located on the sought after Studio Way development.

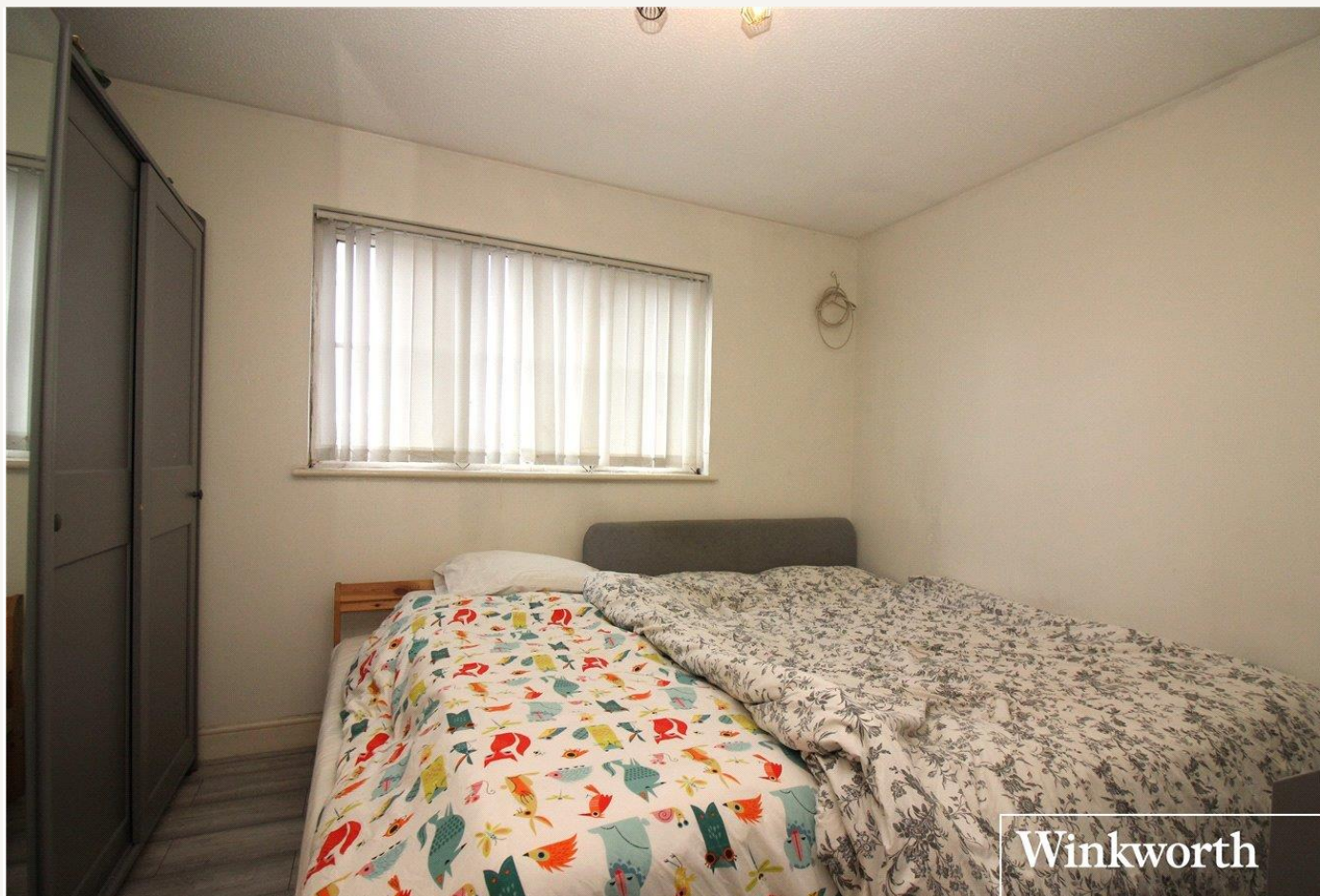
Accommodation consists of a fitted kitchen, downstairs cloakroom and a reception room with access to the South Westerly Facing garden. Upstairs houses two double bedrooms, split by a family bathroom.

A further benefit includes a driveway immediately to the front of the property with room for up to two vehicles.

Milland Court forms part of the ever-popular Studio Way development which has become increasingly popular with young families due to its proximity to central Borehamwood with its wide range of shops, high performing schools and transport links including Elstree and Borehamwood Thameslink station.







## MATERIAL INFO

**Tenure:** Freehold  
**Term:** N/A  
**Service Charge:** N/A  
**Ground Rent:** N/A  
**Council Tax Band:** D  
**EPC rating:** C

Approximate Gross Internal Area = 60 sq m / 646 sq ft

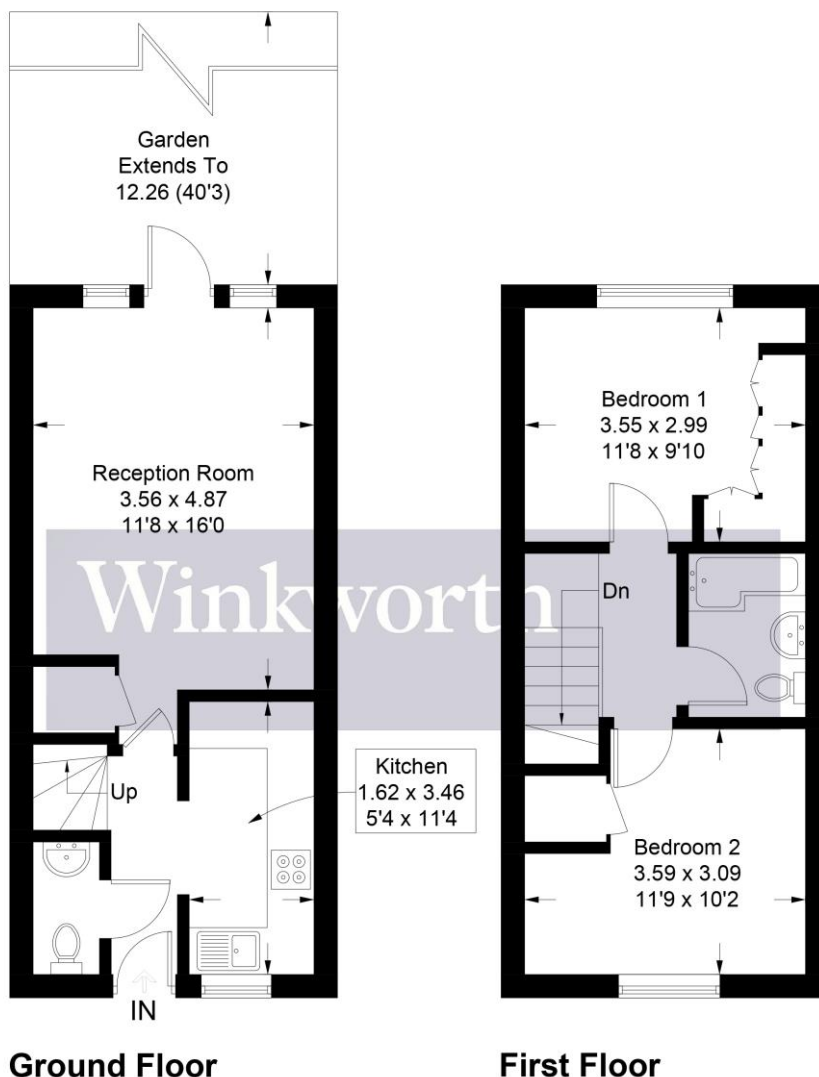
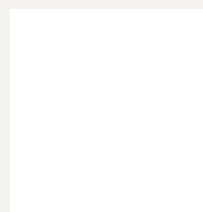


Illustration for identification purposes only, measurements are approximate, not to scale. Winkworth © 2026 (ID1267114)

Score	Energy rating	Current	Potential
92+	A		
81-91	B		90 B
69-80	C	74 C	
55-68	D		
39-54	E		
21-38	F		
1-20	G		

For more information, scan the QR code or visit the link below



<https://www.winkworth.co.uk/sale/property/BOR220199>

Where no figures are shown, we have been unable to ascertain the information. All figures that are shown were correct at the time of printing.

## Borehamwood

020 8953 8899 | [borehamwood@winkworth.co.uk](mailto:borehamwood@winkworth.co.uk)