



LOWER STREET, DARTMOUTH
£419,000 LEASEHOLD

A TOWN CENTRE TWO BEDROOMED MAISONETTE.

Dartmouth | 01803 832288 | dartmouth@winkworth.co.uk

Winkworth

for every step...

winkworth.co.uk

DIRECTIONS: From the Winkworth Dartmouth office, turn left on to Duke Street. Walk on to the end, then turn right that will take you past the Royal Castle Hotel, past Boots and on into Lower Street. 15 Lower Street will be on your left opposite Alf Frescos.

DESCRIPTION: Chic, Trendy, Stylish, Charming, the superlatives are endless when describing this apartment in the centre of Dartmouth. It really does have the “WOW FACTOR”

This vendor’s new opportunity could well be your opportunity as well!

THE ACCOMMODATION COMPRISES:

- Town centre location
- Central level walk to river, gardens and shops
- Stunning presentation
- Perfect blend of modern comfort and convenience.
- Courtyard -Private and Sunny
- Bedrooms: 2
- Bathrooms: 1
- Contemporary Open-Plan Living

N.B. There is no parking with this property.

POSTCODE: TQ6 9AN

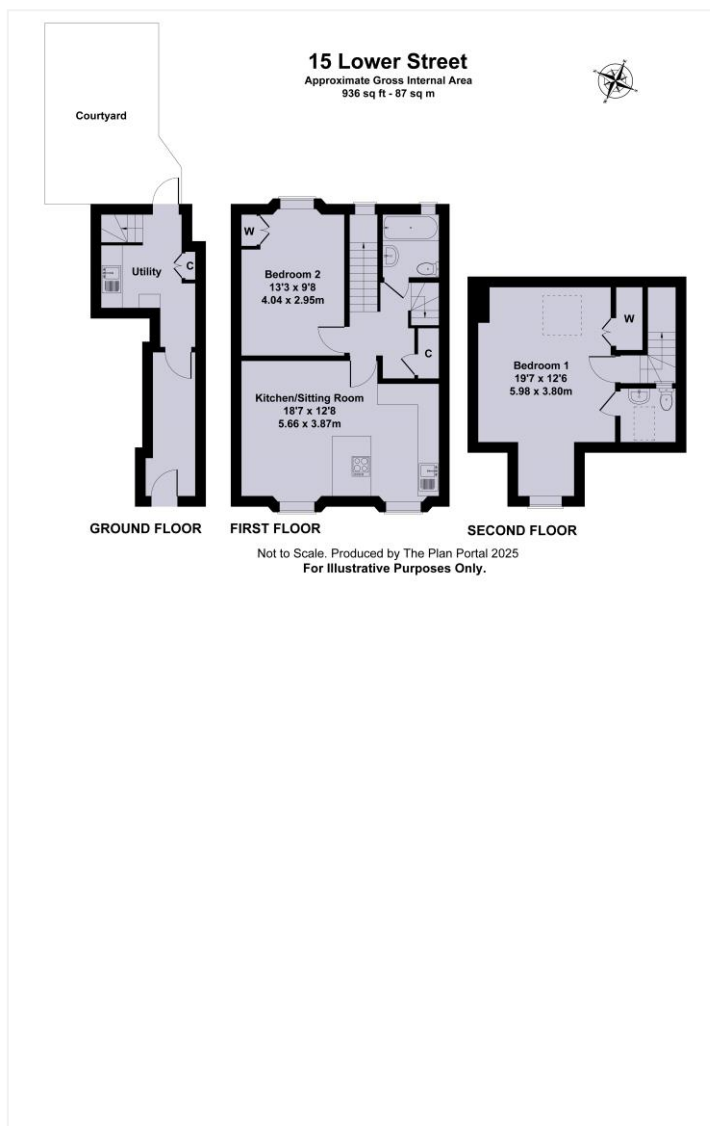
EPC RATING: D

COUNCIL TAX BAND: B (Currently £2044.70 2025/26)

TENURE - Leasehold Remaining: 996 years

SERVICES - All mains services are connected.

Score	Energy rating	Current	Potential
92+	A		
81-91	B		84 B
69-80	C		
55-68	D	67 D	
39-54	E		
21-38	F		
1-20	G		



This floorplan is for illustration purposes only and is not to scale. The position and size of doors, windows, appliances and other features are approximate.

Tenure: Leasehold

Term: 996 year and 0 months

Council Tax Band: B

Where no figures are shown, we have been unable to ascertain the information. All figures that are shown were correct at the time of printing.

Dartmouth | 01803 832288 | dartmouth@winkworth.co.uk

Winkworth

for every step...

winkworth.co.uk

Winkworth wishes to inform prospective buyers and tenants that these particulars are a guide and act as information only. All our details are given in good faith and believed to be correct at the time of printing but they don't form part of an offer or contract. No Winkworth employee has authority to make or give any representation or warranty in relation to this property. All fixtures and fittings, whether fitted or not are deemed removable by the vendor unless stated otherwise and room sizes are measured between internal wall surfaces, including furnishings.