



Gloucester Street, SW1V

£2,231.67 PER MONTH

FURNISHED

AT A GLANCE

- One Bedroom
- One Bathroom
- Open plan kitchen reception
- Furnished
- Modern
- Lift Access

Winkworth

for every step...



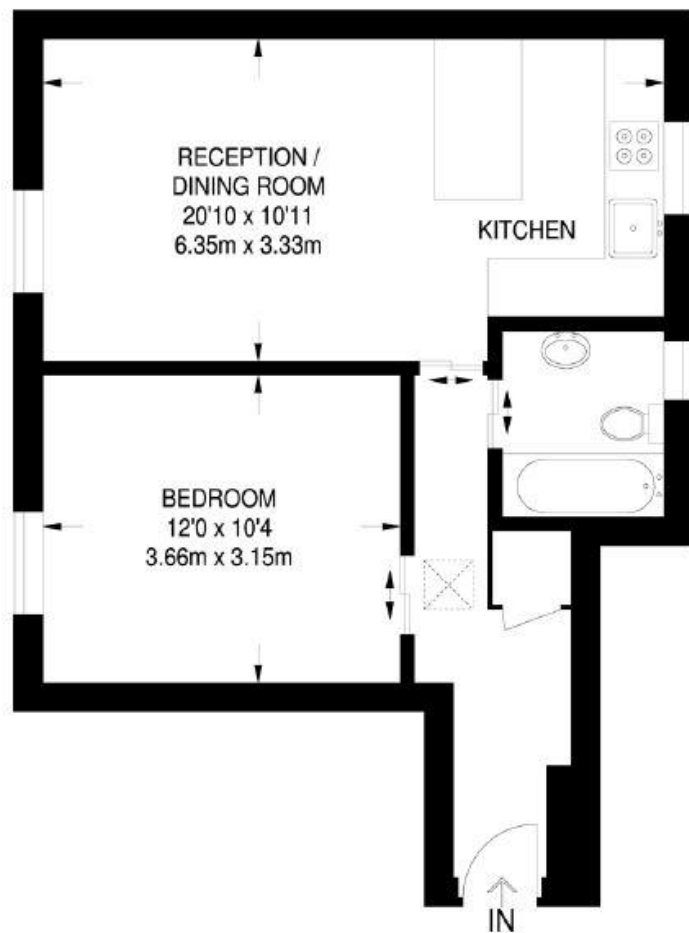
Score	Energy rating	Current	Potential
92+	A		
81-91	B		
69-80	C		71 C
55-68	D	54 E	
39-54	E		
21-38	F		
1-20	G		

GLOUCESTER STREET, SW1V

£2,231.67 PER MONTH

FURNISHED

A beautifully presented fourth floor one bedroom flat located in the Pimlico Grid. The property comprises of an open plan kitchen reception room, double bedroom with built in mirrored wardrobes and a modern bathroom suite. The building has lift access.



FOURTH FLOOR
473 SQ FT / 44.0 SQ M



winkworth wishes to inform prospective buyers and tenants that these particulars are a guide and act as information only. All our details are given in good faith and believed to be correct at the time of printing but they don't form part of an offer or contract. No winkworth employee has authority to make or give any representation or warranty in relation to this property. All fixtures and fittings, whether fitted or not are deemed removable by the vendor unless stated otherwise and room sizes are measured between internal wall surfaces - including fireplaces.

Pimlico & Westminster | 020 7828 1786 |
pimlico@winkworth.co.uk

winkworth.co.uk/pimlico

Winkworth

for every step...