

**720b-722b Old Kent Road****Peckham, London, SE15 1NG**

Substantial Double Retail Unit in a Highly Prominent Location.

2,233 sq ft
(207.45 sq m)

- Striking Street Presence.
- Impressive Period-style Glazed Shopfronts.
- Two Independent Entrance Points.
- Rear Loading Access with Roller Shutter.
- Upper Floors sold off on Long Leases.
- Attractive Capital Value at just £257 p/sq/ft.

720b-722b Old Kent Road, Peckham, London, SE15 1NG

Summary

Available Size	2,233 sq ft
Price	Offers in excess of £600,000
Business Rates	Upon Enquiry
EPC Rating	C (72)

Description

This is a very rare and incredibly versatile opportunity to acquire a pair of Freehold Retail Units along the well-regarded Old Kent Road. The properties both enjoy highly visible and pretty glazed frontages with private entrances and excellent ceiling heights all set within this pair of handsome period buildings.

Internally, the units have been integrated to the rear, allowing for a flexible and free-flowing space as either one large double retail space with warehouse-style storage or potentially two, fully-independent premises. The internal condition is relatively basic with some charming exposed brickwork, rear loading via a roller shutter, security shutters to the front elevation and a small washroom

Location

Located on Old Kent Road, south east London's busiest thoroughfare. Many national companies are represented here including Aldi, Lidl, Asda, Currys PC World and Tesco. Massive regeneration plans are in hand with the potential extension of the Bakerloo Line nearby.

Terms

Tenure – Freehold.

Use Class – E Class.

Local Authority – London Borough of Southwark.

Services - It is our understanding that mains water, electricity, gas and drainage are provided. However, it is the responsibility of the purchaser to ensure that services are available and adequate for any future uses.

AML- The purchaser will be required to provide the necessary information to satisfy AML requirements.

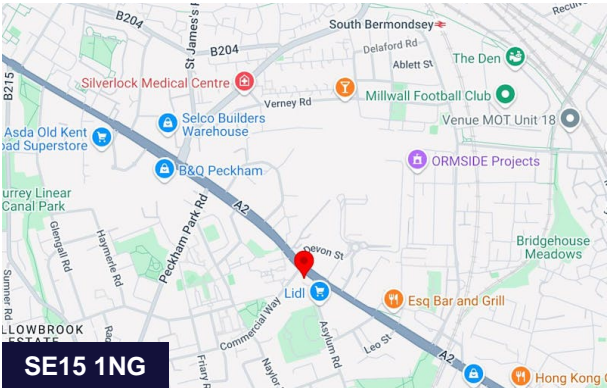
Viewings - The properties may be inspected internally strictly through prior appointment. Prospective purchasers should be aware that inspections are made entirely at their own risk and no liability is accepted by the vendor or their sole agents, Winkworth Commercial.

VAT- The Property is not elected for VAT.

Rates Payable - To be advised.

EPC - 720b: C (72). 722b: C (72).

Method of Sale - The Property is For Sale by Private Treaty on the following Guide Price:- £600,000 (Subject to Contract).



Viewing & Further Information



Chris Ryan
07385 413368 | 020 7355 0285
cryan@winkworth.co.uk



Adam Stackhouse
07817 004082 | 020 7355 0285
astackhouse@winkworth.co.uk

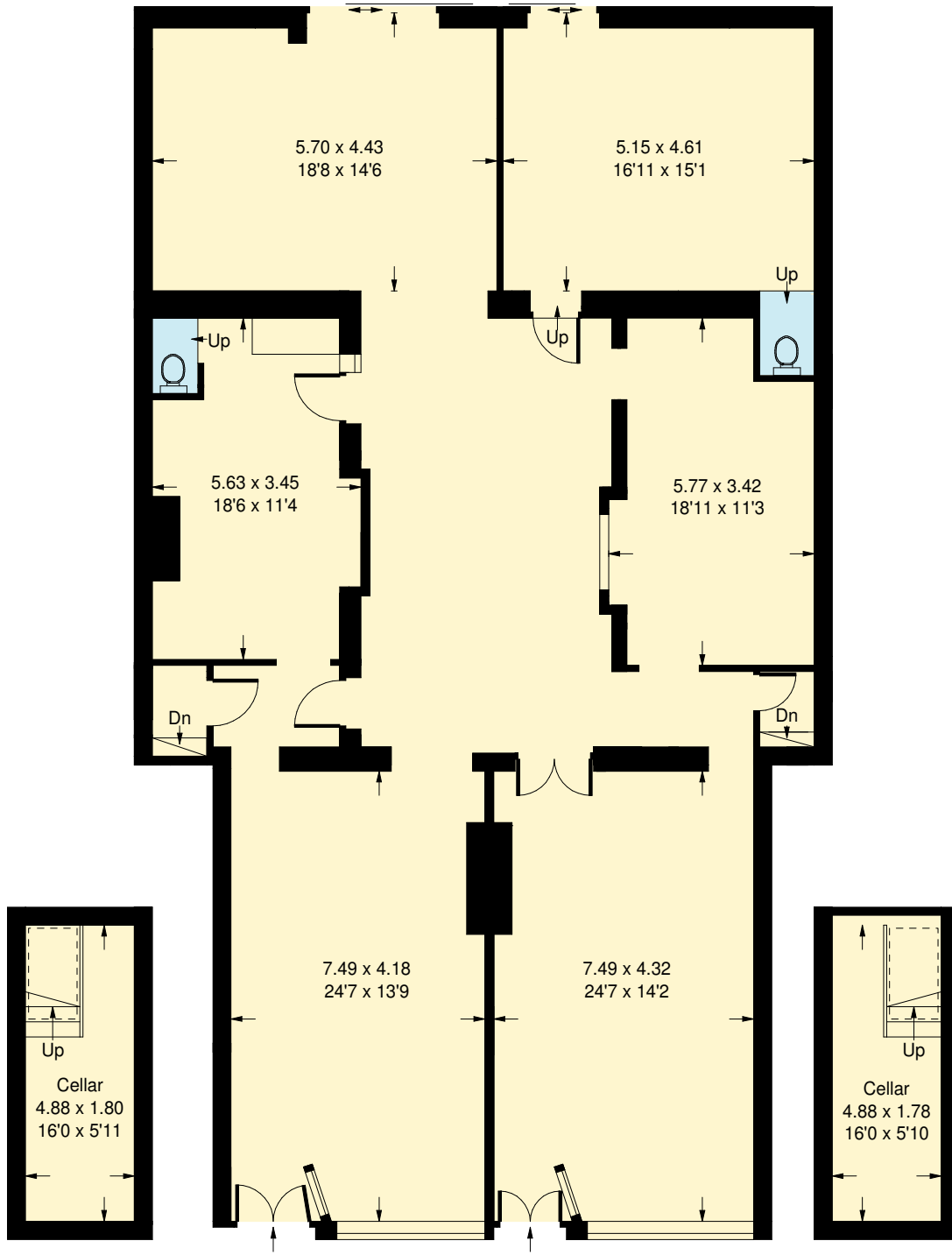
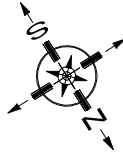
The above information contained within this email is sent subject to contract. These particulars are for general information only and do not constitute any part of an offer or contract. All statements contained therein are made without responsibility on the part of the vendors or lessors and are not to be relied upon as statement or representation of fact. Intending purchasers or lessees must satisfy themselves, by inspection, or otherwise, as to the correctness of each of the statements of dimensions contained in these particulars. Generated on 01/05/2025

Old Kent Road, SE15

Approx. Gross Internal Area = 199.2 sq m / 2144 sq ft

Cellar = 17.6 sq m / 189 sq ft

Total = 216.8 sq m / 2333 sq ft



Cellar

Ground Floor

Cellar

--- = Reduced headroom below 1.5 m / 5'0

Whilst every attempt has been made to ensure the accuracy of the floor plan, measurements are approximate and not to scale.
No guarantee is given on the total square footage of the property quoted on the plan. Figures given are for guidance.
Plan is for illustration purposes only, not to be used for valuations.