



## Devonshire Road, SE23

£360,000 *Leasehold*



Located in a highly sought-after area, this delightful ground floor period apartment perfectly combines timeless character with contemporary comfort. Ideal for individuals or couples, the property features a spacious double bedroom and well-appointed living areas that create a warm and inviting atmosphere.



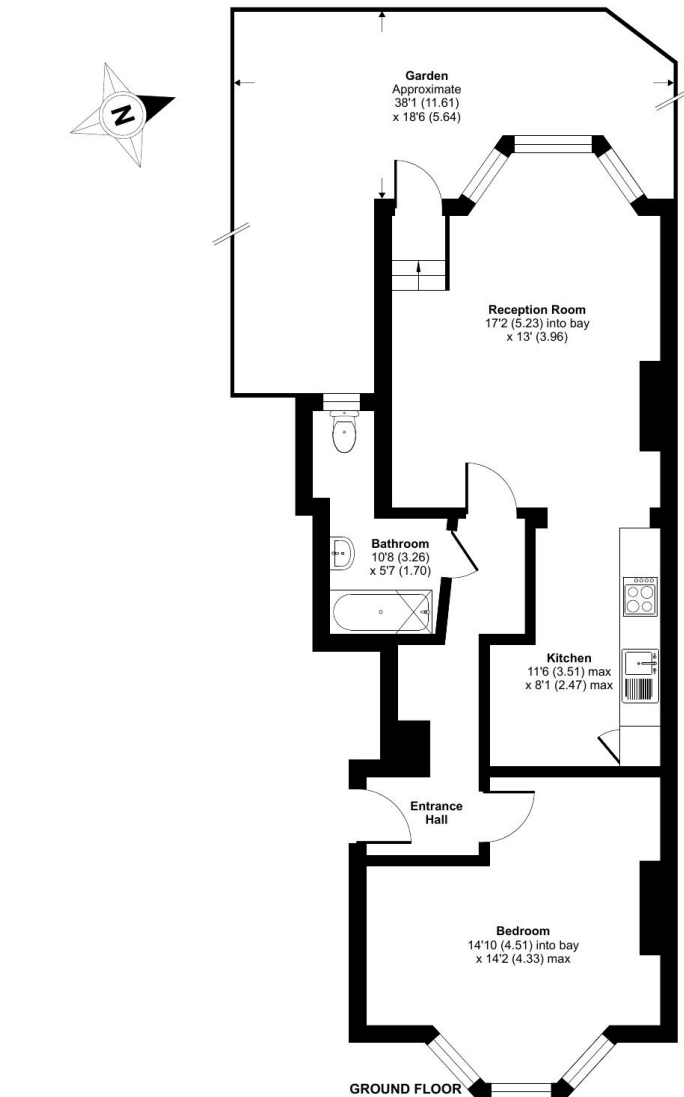
**Forest Hill**

| [foresthill@winkworth.co.uk](mailto:foresthill@winkworth.co.uk)

## Devonshire Road, London, SE23

Approximate Area = 592 sq ft / 55 sq m

For identification only - Not to scale

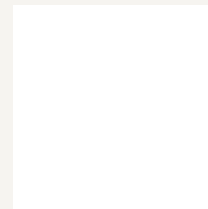


Floor plan produced in accordance with RICS Property Measurement Standards incorporating International Property Measurement Standards (IPMS2 Residential). © nichecom 2025. Produced for Winkworth Forest Hill and New Cross. REF: 1342269

### MATERIAL INFO

For more information, scan the QR code or visit the link below

**Tenure:** Leasehold



<https://www.winkworth.co.uk/sale/property/FHL250235>

Where no figures are shown, we have been unable to ascertain the information. All figures that are shown were correct at the time of printing.

**Forest Hill**

| [foresthill@winkworth.co.uk](mailto:foresthill@winkworth.co.uk)